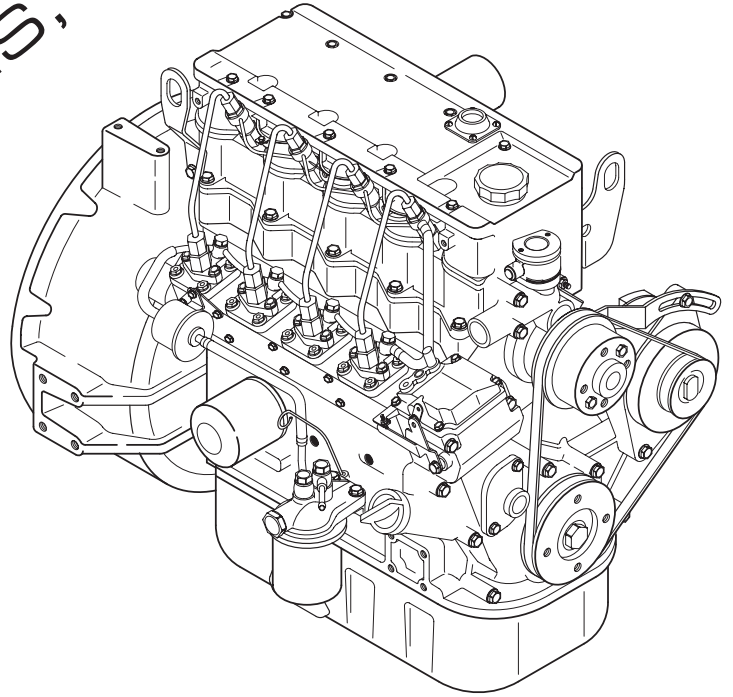


OD9255

GENERAC[®]
POWER SYSTEMS, INC.



2.2 LITER

ISUZU

D I E S E L

ENGINE

PARTS

MANUAL

2.2L DIESEL TABLE OF CONTENTS

SERVICE RECOMMENDATIONS	2-5
QUICK REFERENCE PARTS	2
CYLINDER HEAD, COVER & OTHER PARTS.....	6
CYLINDER BLOCK & OTHER PARTS	8
TIMING GEAR CASE & OTHER PARTS.....	10
FLYWHEEL HOUSING	14
OIL PAN	15
OIL PUMP & FIXING PARTS	16
MAIN MOVING PARTS	18
ROCKER ARM AND VALVE	20
OIL FILTER & FUEL FILTER	22
OIL PIPE	23
COOLING SYSTEM	24
EXHAUST MANIFOLD	25
FUEL INJECTION PIPE & NOZZLE	26
ENGINE HANGER	27
INJECTION PUMP, CAMSHAFT & OTHER PARTS	28
ELECTRICAL PARTS	30
ENGINE COMMON PARTS	32

LEGEND

“AR”	AS REQUIRED
(STD)	STANDARD SIZE
“O.S.”	OVERSIZE
“U.S.”	UNDERSIZE
“NA”	NOT AVAILABLE

NOTICE!

THE INFORMATION IN THIS MANUAL IS KNOWN TO BE ACCURATE AS OF THE DATE OF RELEASE SHOWN ON THE COVER. HOWEVER, ENGINEERING CHANGES CAN OCCUR WITHOUT NOTICE. TO OBTAIN THE PROPER PARTS, PLEASE BE SURE TO USE THE MODEL NUMBER OF THE UNIT BEING SERVICED WHEN ORDERING FROM THIS MANUAL.

2.2L DIESEL SERVICE RECOMMENDATIONS

SPECIFICATIONS:

CRANKCASE OIL CAPACITY: 2.1 U.S. GALLONS (8.0 LITERS)
 COOLING SYSTEM CAPACITY: 2.5 U.S. GALLONS (9.3 LITERS)

RECOMMENDED FLUIDS

COOLANT:

USE A 50/50 MIXTURE OF LOW SILICATE ETHYLENE GLYCOL BASE ANTI-FREEZE AND SOFT WATER. (IF DESIRED, A HIGH QUALITY RUST INHIBITOR MAY BE ADDED TO THE RECOMMENDED COOLANT MIXTURE.) WHEN ADDING COOLANT, ALWAYS ADD THE RECOMMENDED 50/50 MIXTURE.

ENGINE OIL:

USE A HIGH QUALITY DETERGENT OIL HAVING API CLASSIFICATION "FOR SERVICE CC OR CD." THE SAE VISCOSITY RATING OF THE OIL SHOULD BE CAREFULLY SELECTED, BASED ON THE PREVAILING AMBIENT TEMPERATURE RANGE ANTICIPATED BEFORE THE NEXT OIL CHANGE. RECOMMENDED SAE VISCOSITY GRADES ARE AS FOLLOWS:

TEMPERATURE	RECOMMENDED OIL GRADE
ABOVE 90°F	SAE 40
32°F TO 90°F	SAE 30
12°F TO 32°F	SAE 20

QUICK REFERENCE PARTS

PAGE	PART NUMBER	DESCRIPTION	QTY
7	0A86220358	PLUG, GLOW	4
22	0A86220296	CARTRIDGE, OIL FILTER	1
33	062780	AIR CLEANER	1
24	0A86220306	BELT, COOLING FAN	1
22	0A86220370	FILTER ASSEMBLY, FUEL	1
22	0A86220297	CARTRIDGE, FUEL FILTER	1
26	0A86220310	NOZZLE ASSY, INJECTION	4
24	0A86220304	THERMOSTAT	1
24	0A86220303	PUMP ASSY, WATER	1

2.2L DIESEL SERVICE RECOMMENDATIONS

8 KW - 35 KW SMALL STANDBY GENERATOR SETS

Following is a recommended maintenance schedule for Generac small standby and residential generator sets from 8 kW to 35 kW in size, and applies to both diesel engine and gas engine driven units. The established intervals in the schedule are the *maximum* recommended when the unit is used in an average service application. They will need to be decreased (performed more frequently) if the unit is used in a severe application. Use the unit hour meter or calendar time, whichever occurs first, from the previous maintenance interval to determine the next required maintenance interval.

Service Maintenance Interval Information:

The various service maintenance intervals are designated by interval numbers as follows:

- 1 An early inspection of the generator set to insure it is ready to operate when required and to identify any potential problem areas.

*Performed monthly or following each 10 hours of operation of the unit and requires approximately **.5 man-hours** per unit to complete.*

This inspection may be performed by the end user providing the following safety steps are taken to prevent the engine from starting automatically without warning:

To prevent injury, perform the following steps in the order indicated before starting any maintenance:

- **Disable the generator set from starting and/or connecting to the load by setting the control panel Auto-Off-Manual switch to the “OFF” position.**
- **Remove the control panel fuse.**
- **Turn off the battery charger.**
- **Remove the negative battery cable.**

The battery charger must be turned off BEFORE removing the battery cable to prevent an over current condition from burning out sensitive control panel components and circuits.

Following all maintenance, reverse these steps to insure the unit is returned to standby setup for normal operation when required.

- 2 A break-in service inspection of the generator set to insure it is ready to operate and carry the load when required, and to identify any potential problem areas.

*Performed **ONLY ONCE** following the first three months or the first 30 hours of operation after purchase of the unit and requires approximately **2.5 man-hours** per unit to complete.*

This inspection contains some maintenance tasks which require special tools, equipment, and/or knowledge to accomplish and should be performed only by an authorized Generac Service Dealer.

- 3 An operational inspection of the generator set to insure it is ready to operate and carry the load when required, and to identify any potential problem areas.

*Performed semi-annually or following each 50 hours of operation of the unit and requires approximately **1.5 man-hours** per unit to complete.*

This inspection contains some maintenance tasks which require special tools, equipment, and/or knowledge to accomplish and should be performed only by an authorized Generac Service Dealer.

- 4 A mid-level inspection of the generator set to insure it is ready to operate and carry the load when required, and to identify any potential problem areas.

*Performed annually or following each 100 hours of operation of the unit and requires approximately **4.0 man-hours** per unit to complete.*

This inspection contains some maintenance tasks which require special tools, equipment, and/or knowledge to accomplish and should be performed only by an authorized Generac Service Dealer.

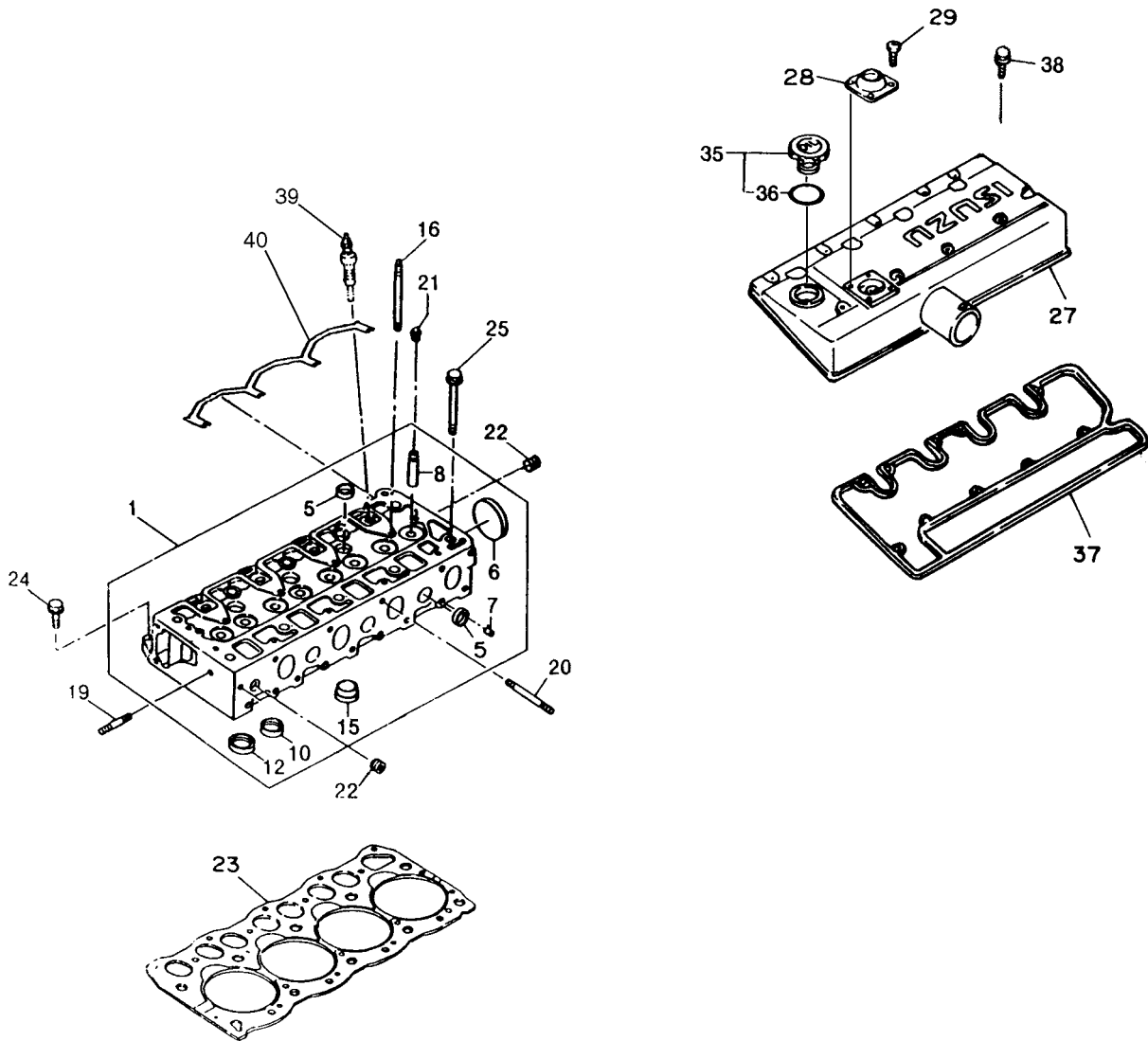
2.2L DIESEL

Maintenance Tasks	Level 1	Task Comp. (Date-Initials)	Level 2	Task Comp. (Date-Initials)	Level 3	Task Comp. (Date-Initials)	Level 4	Task Comp. (Date-Initials)
	Recommended to be done monthly/ 10 hrs.		Required to be done 3 months/ Break-in 30 hrs.		Required to be done Semi-annually/ 50 hrs.		Required to be done Annually/ 100 hrs.	
1. Disable the unit from operating per the first page warning.	●		●		●		●	
2. Check the engine oil level. Adjust as necessary.	●		●		●		●	
3. Check the engine coolant level. Adjust as necessary.	●		●		●		●	
4. Check the engine coolant thermal protection level. Correct as necessary.							●	
5. Check the natural gas delivery system on gas engine driven units. Tighten connections as necessary.			●		●		●	
6. Check the diesel fuel supply level for diesel engine driven units. Fill as necessary.	●		●		●		●	
7. Drain water and sediment from the diesel fuel tank on diesel engine driven units.			●		●		●	
8. Drain water from the fuel line water separator on diesel engine driven units if the unit is equipped with one.			●		●		●	
9. Check the air inlets and outlets for debris. Clean as necessary.	●		●		●		●	
10. Check the battery electrolyte level if accessible. Adjust as necessary.	●		●		●		●	
11. Check the battery posts, cables, and charger for loose connections, corrosion, and proper operation. Correct as necessary.	●		●		●		●	
12. Check the unit wiring for loose connections, corrosion, and damage. Correct as necessary.							●	
13. Check the engine accessory drive belts for wear, weather cracking, and damage. Replace as necessary.							●	

2.2L DIESEL

Maintenance Tasks	Level 1 Recom- mended to be done monthly/ 10 hrs.	Task Comp. (Date- Initials)	Level 2 Required to be done 3 months/ Break-in 30 hrs.	Task Comp. (Date- Initials)	Level 3 Required to be done Semi- annually/ 50 hrs.	Task Comp. (Date- Initials)	Level 4 Required to be done Annually/ 100 hrs.	Task Comp. (Date- Initials)
14. Visually inspect the unit looking for leaks, wear or damage, loose connections or components, and corrosion. Correct as necessary.								
15. Test the engine and transfer switch safety devices. Correct and/or adjust as necessary.								
16. Initiate an automatic start and transfer of the unit to site load and exercise it for at least 1 hour looking for leaks, loose connections or components, and abnormal operating conditions. Correct as necessary.								
17. Start and exercise the unit at full rated load (use a load bank if the site load is not enough) for at least 2 hours looking for leaks, loose connections or components, and abnormal operating conditions. Correct as necessary.								
18. Change the engine oil.								
19. Replace the engine oil filter(s).								
20. Replace the engine air filter(s).								
21. Replace the engine fuel filter(s) on diesel engine driven units and re-prime the fuel system.								
22. Check the engine spark plugs on gas engine driven units. Clean and re-gap or replace as necessary.								
23. Perform a 5 minute no-load operational run of the unit looking for any post service problems.								
24. Return the unit to standby setup for operation when required.								

2.2L DIESEL CYLINDER HEAD, COVER & OTHER PARTS



2.2L DIESEL CYLINDER HEAD, COVER & OTHER PARTS

ITEM	PART NUMBER	DESCRIPTION	QTY
1	0A86220101	HEAD ASSY, CYL	1
5	0A86220102	CUP, SEALING D=22	6
6	0A86220380	CUP, SEALING D=44.5	1
7	0A86220381	PLUG, DRILLED PAS D=8	5
8	0A86220367	VALVE GUIDE	8
10	0A86220103	SEAT, VALVE INSERT, INLET	4
12	0A86220104	SEAT, VALVE INSERT, EXH	4
15	0A86220105	PLUG, HOT	4
16	0A86220106	STUD, RKR BRKT	6
19	0A86220107	STUD, WATER PUMP	1
20	0A86220108	STUD, MANIFOLD	2
21	0A86220109	SEAL, VALVE	8
22	0A86220110	PLUG	2
23	0A86220112	GASKET, CYL HEAD	1
24	0A86220113	BOLT, CYL HEAD	5
25	0A86220114	BOLT, CYL HEAD	10
27	0A86220115	COVER ASSY, CYL HEAD	1
28	0A86220116	VALVE ASSY, VENTILATOR	1
29	0A86220117	SCREW, VALVE	4
35	0A86220118	CAP ASSY, OIL FILLER	1
36	0A86220119	PACKING, OIL FILLER CAP	1
37	0A86220120	GSKT, CYL HEAD COVER	1
38	0A8622A132	BOLT, COVER 20mm	5
	0A86220122	BOLT, COVER	5
39	0A86220358	PLUG, GLOW	4
40	0A86220382	CONNECTOR, GLOW PLUG	1

2.2L DIESEL CYLINDER BLOCK & OTHER PARTS

ITEM	PART NUMBER	DESCRIPTION	QTY
1	0A86220123	BLOCK ASSY, CYL	1
2	0A86220383	BOLT	10
3	0A86220124	CUP, SEALING D=35	5
4	0A8622A124	CUP, SEALING D=22	1
5	0A8622B124	CUP, SEALING D=12	5
8	0A86220125	BEARING, NEEDLE CAM	1
9	0A86220126	PLUG, THRUST CAM	1
11	0A86220127	PLUG, WATER DRAIN	1
12	0A86220128	PLUG, OIL GALLERY PT 1/8	3
13	0A86220129	PLUG, OIL GALLERY PT 1/8	1
13-1	0A86220225	PLUG	1
14	0A86220130	COVER, INJ PUMP HSG	1
17	0A86220131	NUT	2
18	0A86220132	BOLT, 14MM	5
	0A8622A132	BOLT, 20MM	1
19	0A86220133	STUD, INJ PMP, HSG CVR	1
20	0A86220134	STUD, OIL PAN	2
21	0A86220384	STUD, OIL FILTER M20	1
22	0A86220135	PIN, CONTROL LINK	2
23	0A86220136	PIN, STRAIGHT HSG	2
24	0A86220137	DOWEL	2
25	0A86220138	PIN, STRAIGHT RETAINER	2
26	0A86220139	PLUG, CYL BLK M14	1
27	0A86220140	PACKING, PLUG	1
28	0A86220141	DOWEL, CYL HEAD	2
29	0A86220137	DOWEL	2
30	0A86220144	PIN, STRAIGHT, INJ PUMP	8
31	0A86220145	STUD, INJ PUMP, L1=20	8
34	0A86220146	STUD, WATER PMP L1=40	1
36	0A86220147	STUD, TIMG CASE L1=60	1
37	0A86220148	STUD, TIMG CASE L1=50	1
38	0A86220149	LEVEL GAUGE, OIL L=121	1
39	0A86220150	RETAINER, CRK, REAR	1
40	0A86220151	SEAL, OIL CRK, REAR	1
41	NA	PACKING, RETAINER (USE BOND)	NA
42	0A86220121	BOLT	6
48	0A86220153	CLIP, F/PUMP LEAD WIRE	1

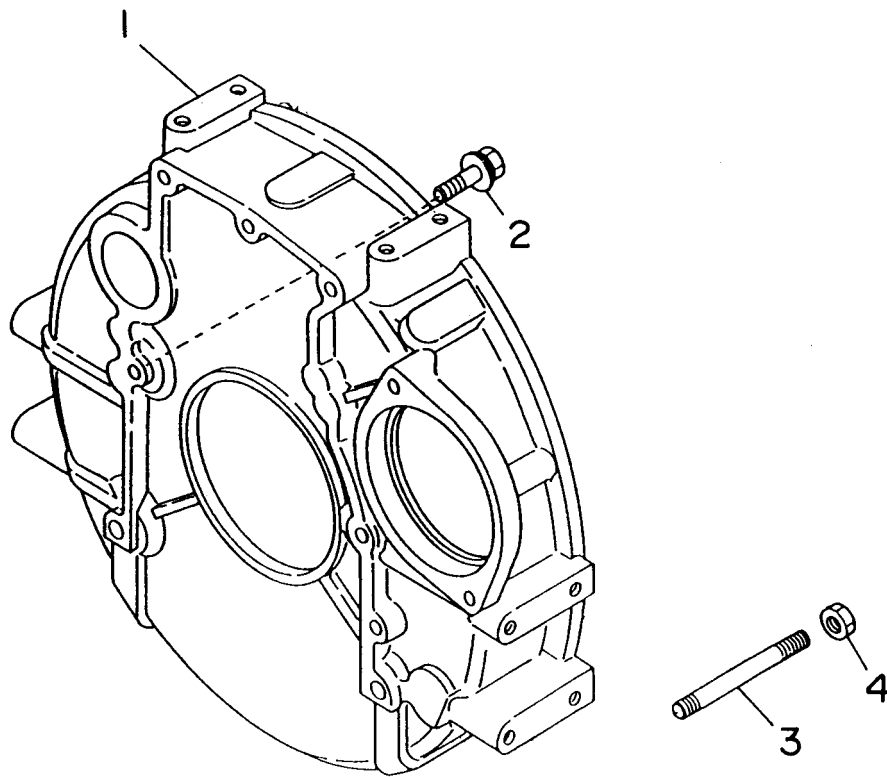
2.2L DIESEL TIMING GEAR CASE & OTHER PARTS

ITEM	PART NUMBER	DESCRIPTION	QTY
1	0A86220154	FLYWEIGHT ASSY	1
2	0A86220155	SLEEVE ASSY	1
5	0A86220156	SHAFT, LEVER D=8 L=50	1
6	0A86220157	LEVER ASSY, GUIDE	1
7	0A86220158	SHIFTER, GOVERNOR	1
8	0A86220159	SHFT, SHIFTER D=6 L=25	1
9	0A86220160	RING, SNAP	1
11	0A86220161	LEVER, TENSION, GOV'NR	1
14	0A86220162	SPRING, MAIN	1
16	0A86220163	LEVER ASSY, FLOATING	1
17	0A86220164	SHAFT, FLOATING LEVER	1
18	0A86220165	PLUG, SHAFT PT 1/8	1
19	0A86220166	PIECE, GUIDE PIN, G/LEVER	1
20	0A86220167	PIN, SPRIT, G/LEVER	1
22	0A86220169	PLATE, LINK, LEVER-PUMP	1
23	0A86220170	SPRING, START	1
24	0A86220171	SPRING, SET	1
26	0A86220172	LINK ASSY, CONTROL	1
27	0A86220173	PIN, SNAP, LINK PLATE	1
29-1	0A86220174	LEVER ASSY, MAIN SPRING	1
29-2	0A86220175	ADJUSTER, GOVERNOR	1
30	0A86220176	SPRING, RETURN	1
31	0A86220177	BUSH, LEVER, MAIN SPRG	1
32	0A86220178	BUSH, LEVER, MAIN SPRG	1
33	0A86220179	CUP, SEALING, BUSH D=10	1
34	0A86220180	LEVER, GOV'NR CONTROL	1
35	0A86220181	O-RING, CONTROL SHFT	1
36	0A86220182	WASHER, THRUST	1
37	0A86220183	NUT, LEVER TO SHFT	1
38	0A86220184	PIN, CONTROL SPRG	1
39	0A86220185	WASHER	1
40	0A86220186	SCREW, CONTROL L=38	2
41	0A86220187	NUT, SCREW	2
43	0A86220188	SCREW SET, FULL LOAD	1
44	0A86220189	NUT, SCREW	1
46	0A86220190	EYE, START SPRING	1
48	0A86220191	SCREW, SET, IDLE SPRG	1
49	0A86220192	WASHER, IDLE SPRG, LWR	1
50	0A86220193	WASHER, IDLE SPRG, UPR	1
51	0A86220194	RING, SNAP, IDLE SPRG	1
52	0A86220195	PACKING, SET SCREW	2
53	0A86220196	NUT, CAP, SET SCREW	1
54	0A86220197	NUT, SET SCREW	1
55	0A86220198	CAP, IDLE SET	1
56	0A86220199	SPRING, IDLE	1
57	0A86220201	SHAFT ASSY, FUEL CUT	1
58	0A86220202	SPRG, RET, FUEL CUT	1
59	0A86220203	LEVER, FUEL CUT	1
60	0A86220204	O-RING, SHAFT	1
61	0A86220205	WASHER, THRUST	1
62	0A86220206	NUT, SHAFT-LEVER	1
62-1	0A86220185	WASHER	1

2.2L DIESEL TIMING GEAR CASE & OTHER PARTS (CONT'D)

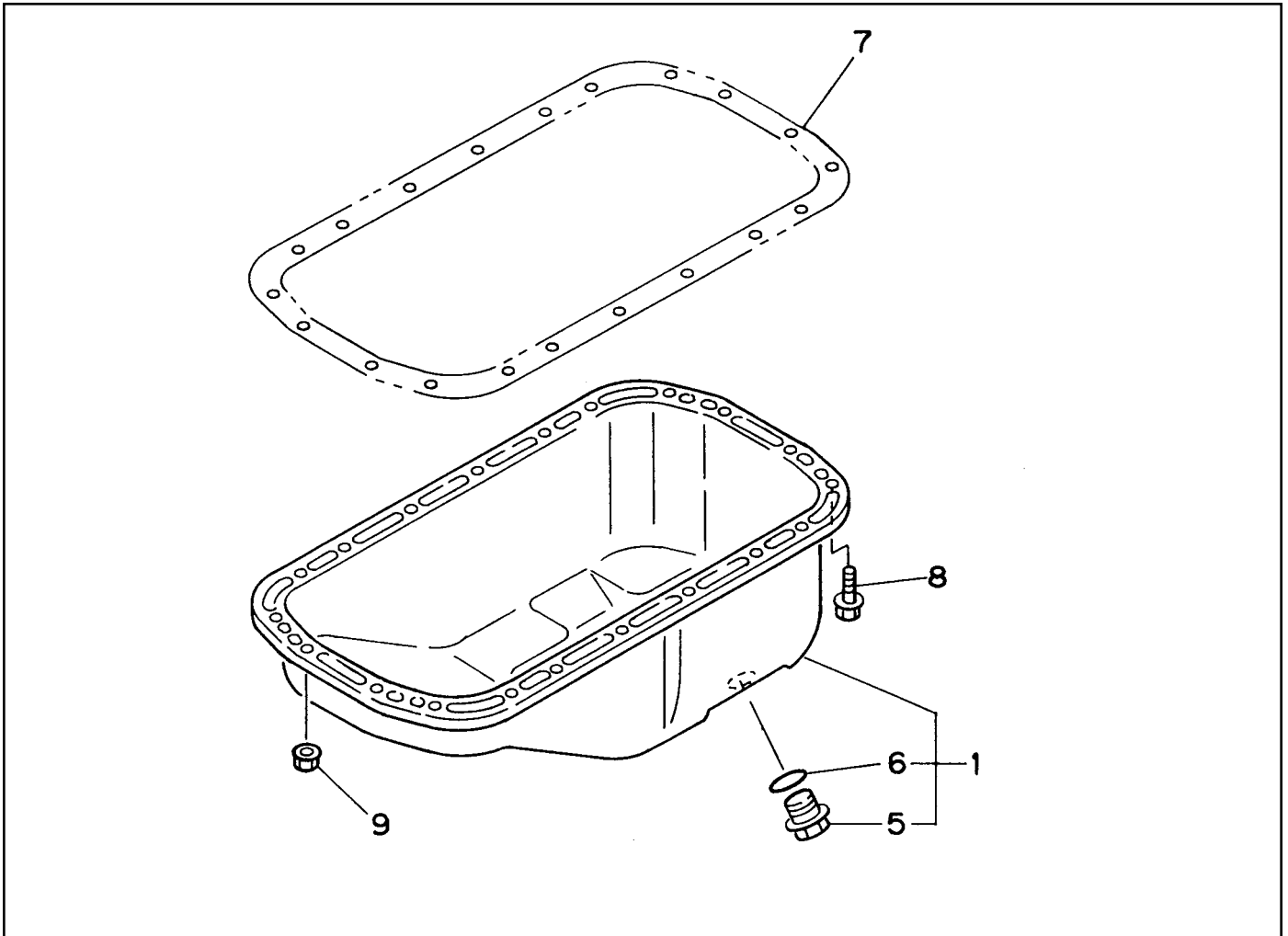
ITEM	PART NUMBER	DESCRIPTION	QTY
63	0A86220208	COVER, GOV'NR LEVER	1
64	0A86220209	PACKING, COVER	1
65	0A86220121	BOLT	4
66	0A86220211	CASE, GEAR, TIMING	1
70	0A86220212	SEAL, OIL CRK, FRT	1
71	0A86220213	COVER, ANGLEICH	1
72	0A86220214	CUP, SEALING, D=16	1
73	0A86220215	O-RING, CVR ANGLEIGH	1
74	0A86220216	BOLT, COVER FIX	1
75	0A86220217	BOLT, W/DETENT HOLE I-16	1
77	0A86220218	BOLT, TIMING CASE-BLK	2
78	0A86220219	BOLT, TIMING CASE-BLK	6
79	0A86220220	NUT, TIMING CASE	2
81	0A86220221	CAP ASSY, OIL FILLER	2
82	0A86220119	PACKING, CAP	1
93	0A86220223	SEAL, LEAD	2
94	0A86220224	WIRE, LEAD SEAL	2
102	0A86220225	PLUG	1

2.2L DIESEL FLYWHEEL HOUSING



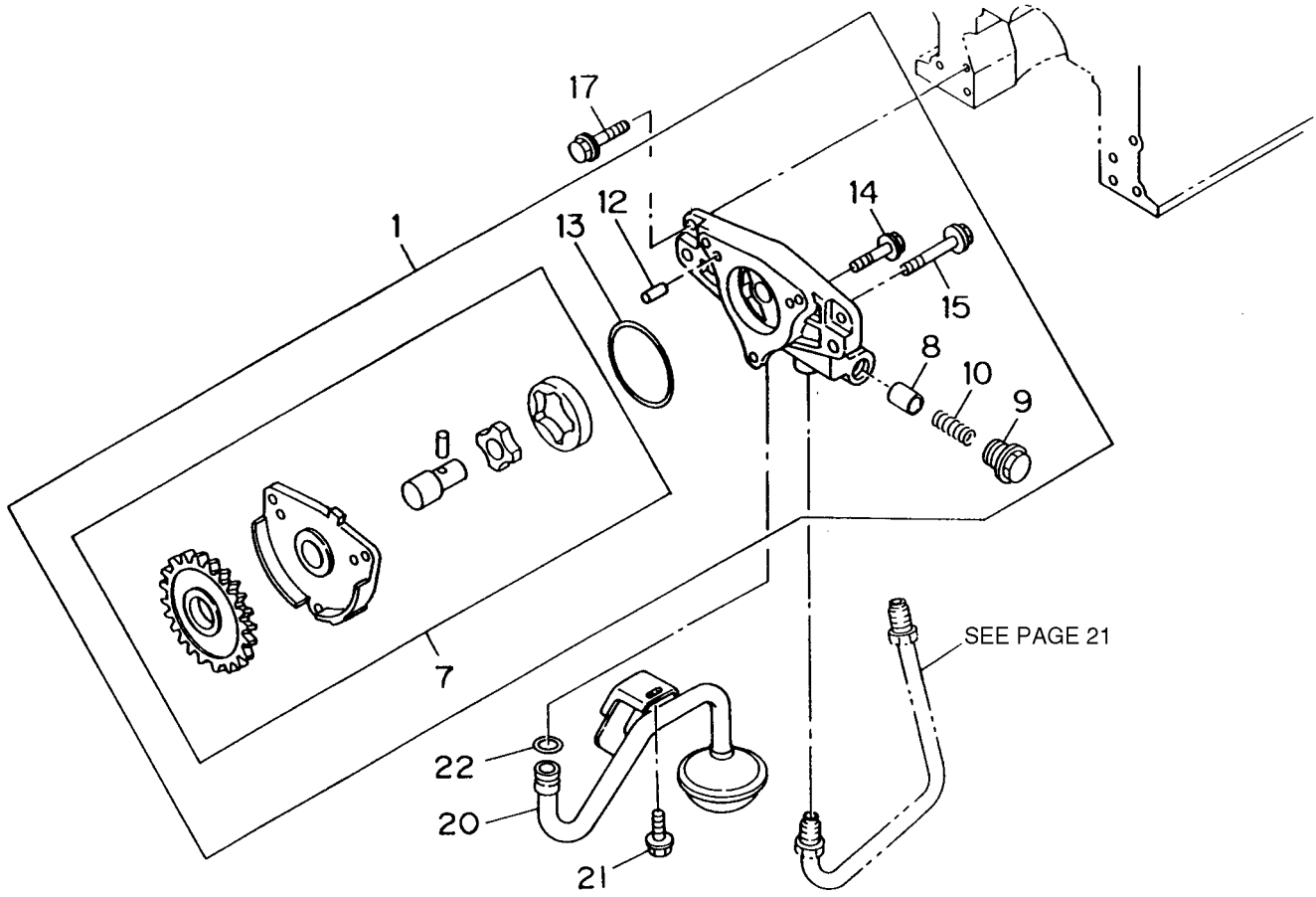
ITEM	PART NUMBER	DESCRIPTION	QTY
1	0A86220226	HSG, FLYWHL, L=158	1
2	0A86220227	BOLT, HSG, BLOCK	4
3	0A86220228	STUD, BLOCK, HSG	2
4	0A86220229	NUT	2

2.2L DIESEL OIL PAN



ITEM	PART NUMBER	DESCRIPTION	QTY
1	0A86220230	PAN ASSY, OIL	1
5	0A86220231	PLUG, OIL DRAIN	1
6	0A86220232	O-RING, DRAIN PLUG	1
7	NA	USE SEALANT	
8	0A86220132	BOLT, 14MM	20
9	0A86220131	NUT	2

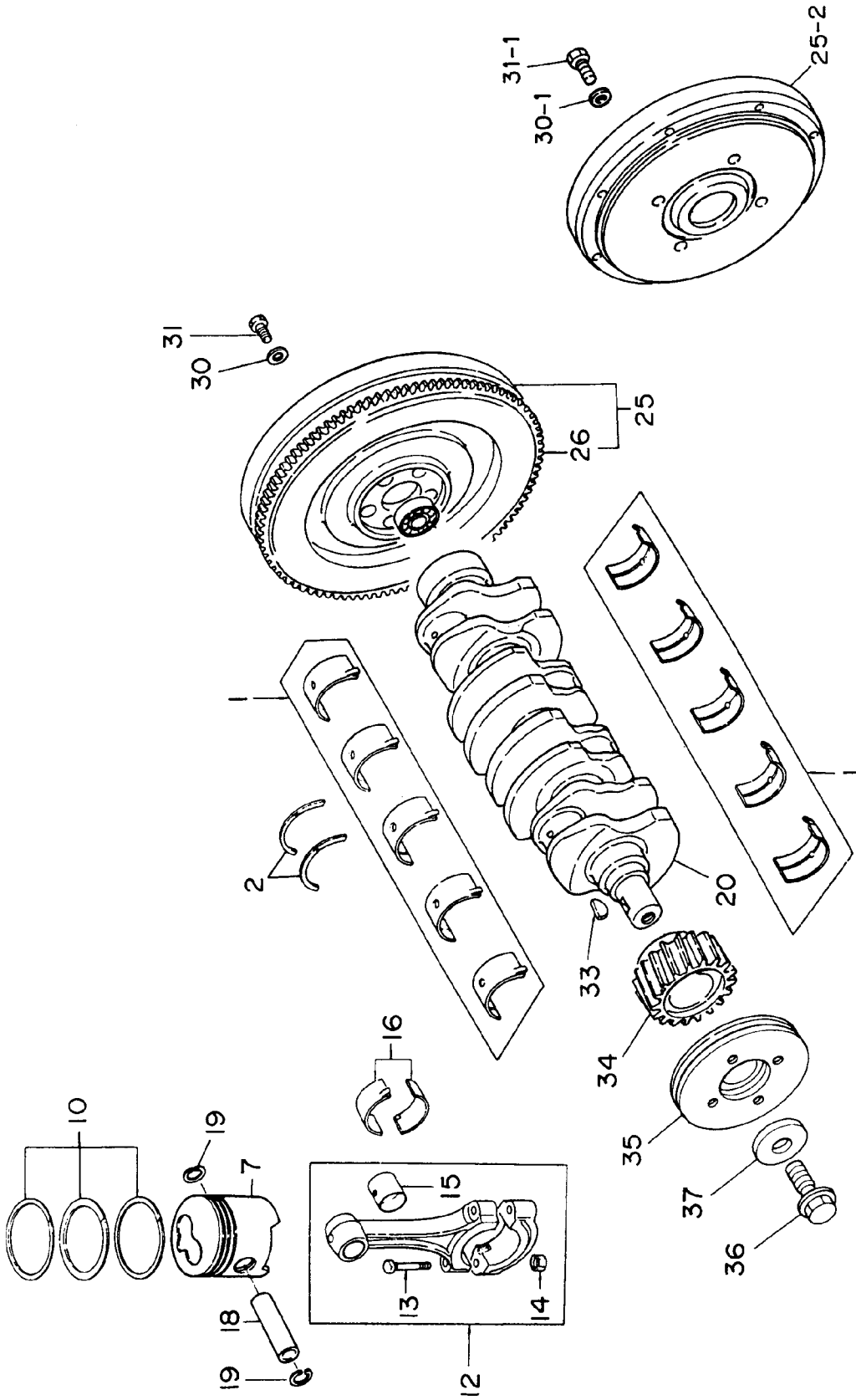
2.2L DIESEL OIL PUMP & FIXING PARTS



2.2L DIESEL OIL PUMP & FIXING PARTS

ITEM	PART NUMBER	DESCRIPTION	QTY
1	0A86220235	PUMP ASSY, OIL	1
7	0A86220236	PUMP SUB ASSY, OIL	1
8	0A86220237	VALVE, RELIEF	1
9	0A86220238	PLUG, VALVE	1
10	0A86220239	SPRING, VALVE	1
12	0A86220240	PIN, OIL PUMP	2
13	0A86220241	O-RING, OIL PUMP	1
14	0A86220242	BOLT, OIL PUMP SUB	1
15	0A86220243	BOLT, OIL PUMP SUB	1
17	0A86220244	BOLT, O/PUMP-CYL BLK	4
20	0A86220245	STRAINER ASSY, OIL	1
21	0A86220246	BOLT, STRAINER	1
22	0A86220247	O-RING, STRAINER ID=13.8	1

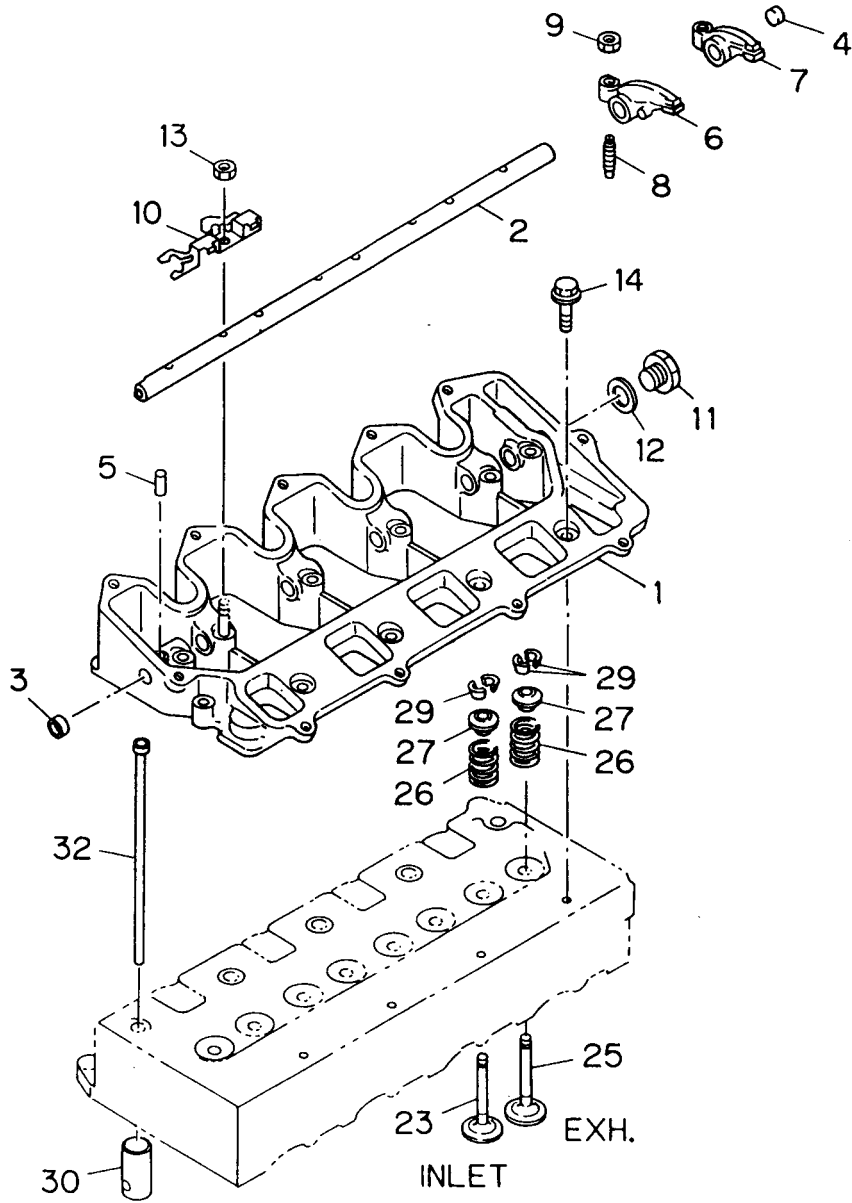
2.2L DIESEL MAIN MOVING PARTS



2.2L DIESEL MAIN MOVING PARTS

ITEM	PART NUMBER	DESCRIPTION	QTY
1	0A86220248	BEARING KIT, CRANK	1
2	0A86220249	METAL, THRUST	2
7	0A86220250	PISTON, STD	4
7	0A86220251	PISTON, O.S. 0.25	AR
10	0A86220252	RING SET, PISTON STD	4
10	0A86220253	RING SET, PISTON O.S. 0.25	AR
12	0A86220254	ROD ASSY, CONN ROD	4
13	0A86220255	BOLT, CONN ROD	8
14	0A86220256	NUT, CONN ROD	8
15	0A86220257	BUSH, CONN ROD	4
16	0A86220258	METAL SET, CONN ROD	4
18	0A86220259	PIN, PISTON	4
19	0A86220260	RING, SNAP	8
20	0A86220261	CRKSHAFT ASSY (TOCCO)	1
25	0A86220262	FLYWHEEL ASSY	1
25-2	0A86220263	FLYWHEEL, REAR	1
26	0A86220264	GEAR, RING	1
30	0A86220265	WASHER, FLYWHEEL	6
30-1	0A86220266	BOLT, FLYWHEEL	4
31	0A86220267	BOLT, FLYWHEEL	6
31-1	0A86220268	BOLT, FLYWHEEL F TO R	4
33	0A86220269	KEY, WOODRUFF	1
34	0A86220270	GEAR, CRKSHFT, Z=37	1
35	0A86220271	PULLEY, CRKSHFT	1
36	0A86220272	BOLT, PULLEY	1
37	0A86220273	WASHER, PULLEY	1

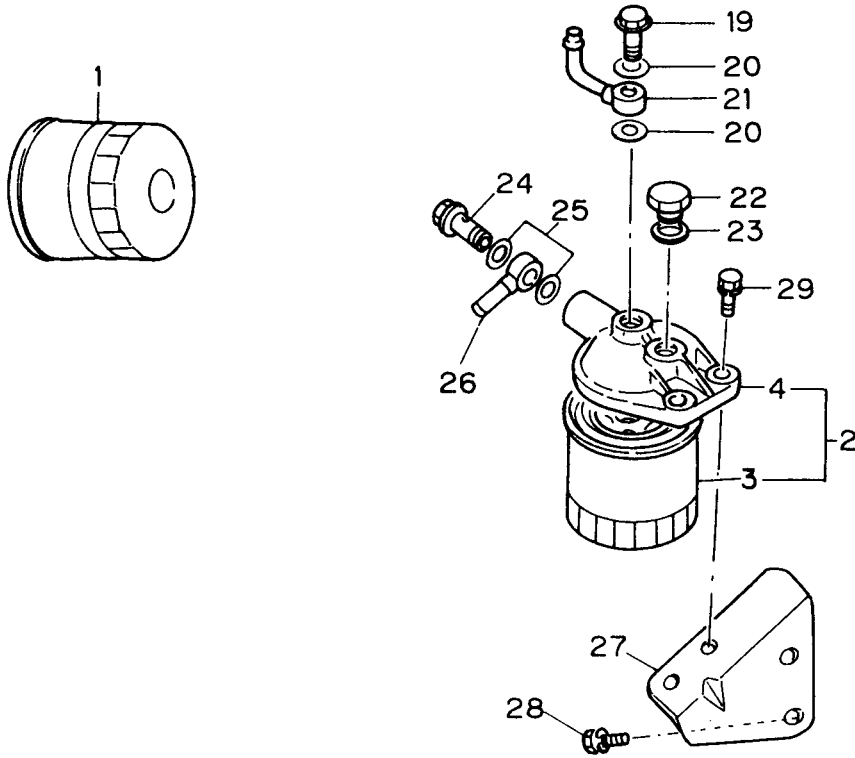
2.2L DIESEL ROCKER ARM AND VALVE



2.2L DIESEL ROCKER ARM AND VALVE

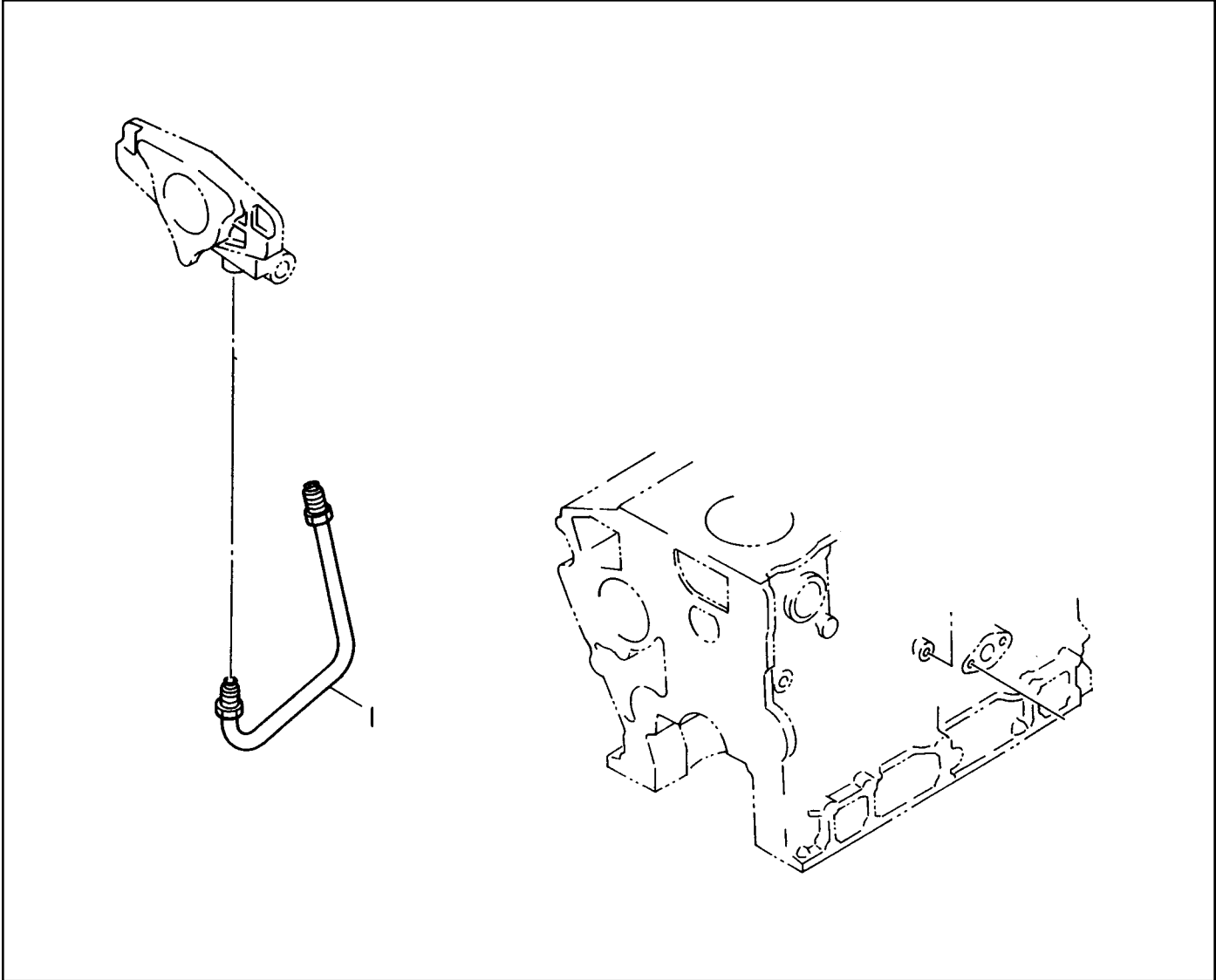
ITEM	PART NUMBER	DESCRIPTION	QTY
1	0A86220274	BRACKET, ROCKER	1
2	0A86220275	SHAFT, ROCKER	1
3	0A86220276	CUP, SEALING D=12	1
4	0A86220277	CUP, SEALING D =8	1
5	0A86220278	PIN, ROCKER SHAFT	1
6	0A86220279	ARM, ROCKER, INLET	4
7	0A86220280	ARM, ROCKER, EXHAUST	4
8	0A86220281	SCREW, ADJ	8
9	0A86220282	NUT, ADJ SCREW	8
10	0A86220283	SPRING, ROCKER	4
11	0A86220284	PLUG, RKR SHAFT	1
12	0A86220285	PACKING, PLUG	1
13	0A86220131	NUT	6
14	0A86220287	BOLT, RKR BRKT	5
23	0A86220289	VALVE, INLET	4
25	0A86220290	VALVE, EXHAUST	4
26	0A86220291	SPRING, VALVE	8
27	0A86220292	SEAT, VALVE SPRING	8
29	0A86220293	COLLAR, SPLIT	16
30	0A86220294	TAPPET	8
32	0A86220295	ROD, PUSH	8

2.2L DIESEL OIL FILTER & FUEL FILTER



TEM	PART NUMBER	DESCRIPTION	QTY
1	0A86220296	CARTRIDGE, OIL FILTER	1
2	0A86220370	FILTER ASSEMBLY, FUEL	1
3	0A86220297	CARTRIDGE, FUEL FILTER	1
4	0A86220371	BODY	1
19	0A86220372	BOLT, EYE JOINT, OUT	1
20	0A86220298	PACKING, EYE JOINT	2
21	0A86220373	JOINT, EYE, FILTER OUT	1
22	0A86220299	PLUG, FUEL FILTER	1
23	0A86220300	PACKING, PLUG, FUEL FILTER	1
24	0A86220372	BOLT, EYE JOINT, IN	1
25	0A86220298	PACKING, EYE JOINT	2
26	0A86220374	JOINT, EYE, FILTER IN	1
27	0A86220375	BRACKET, FUEL FILTER	1
28	0A86220376	BOLT, BRACKET FIX	2
29	0A86220377	BOLT, FUEL FILTER	2

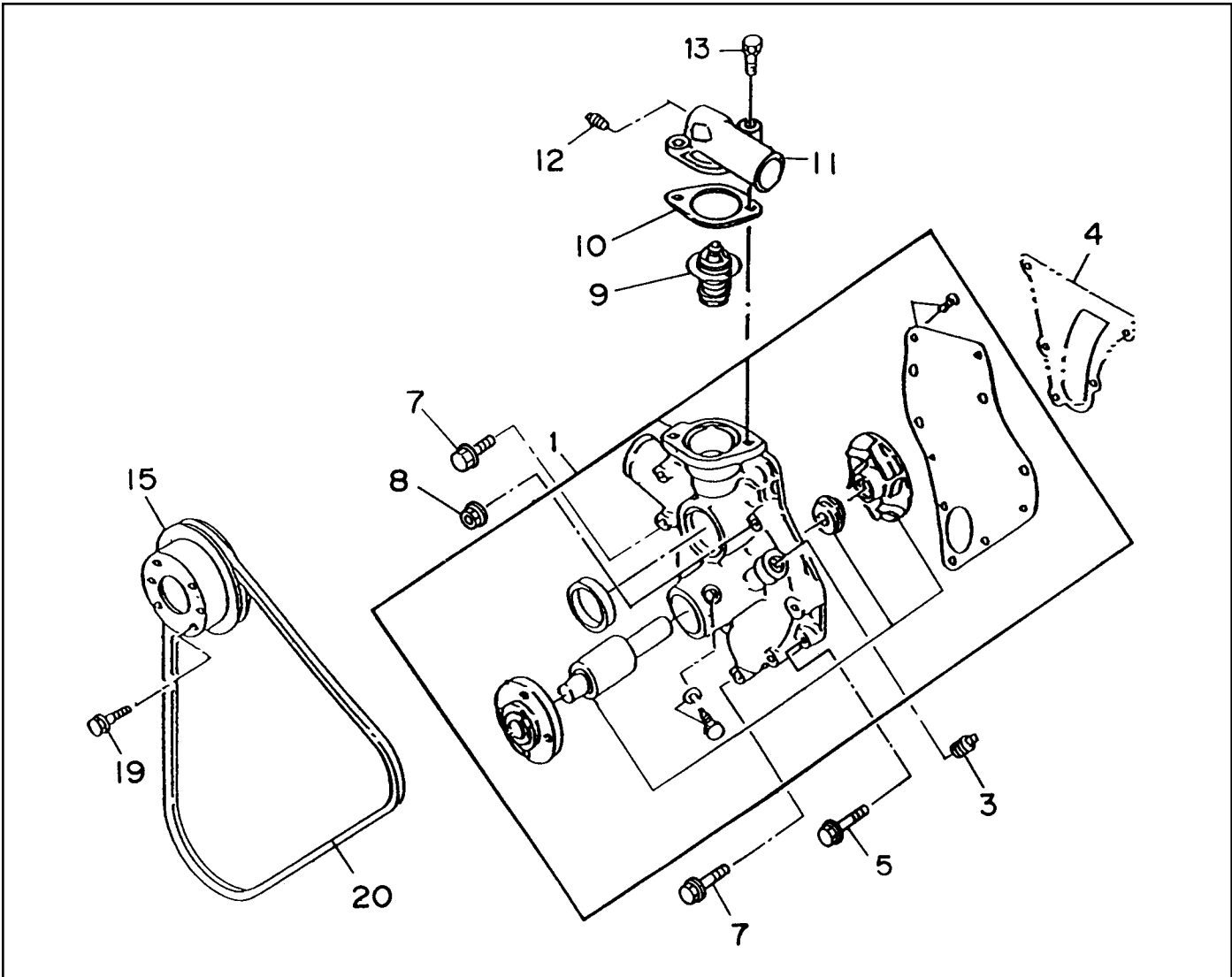
2.2L DIESEL OIL PIPE



ITEM	PART NUMBER	DESCRIPTION	QTY
------	-------------	-------------	-----

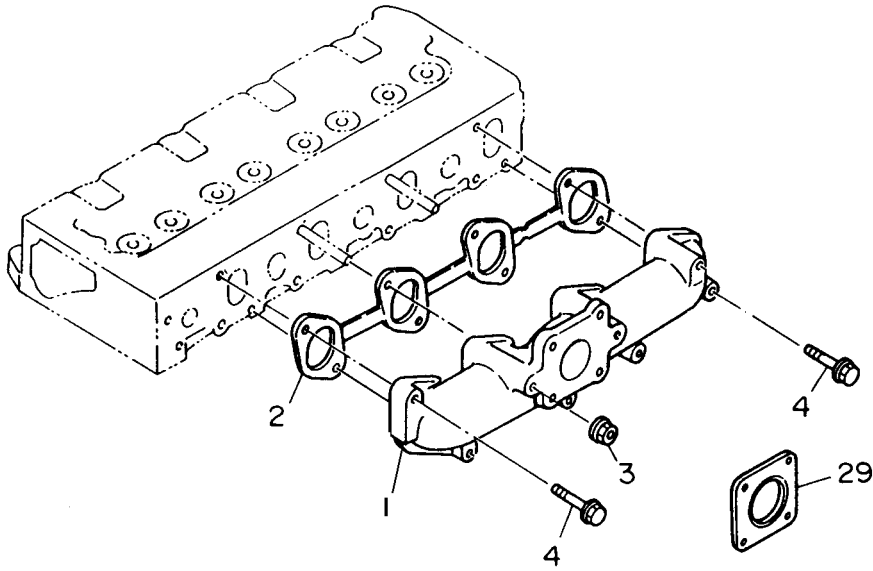
1	0A86220302	PIPE,OIL PUMP, CYL BLK	1
---	------------	------------------------	---

2.2L DIESEL COOLING SYSTEM



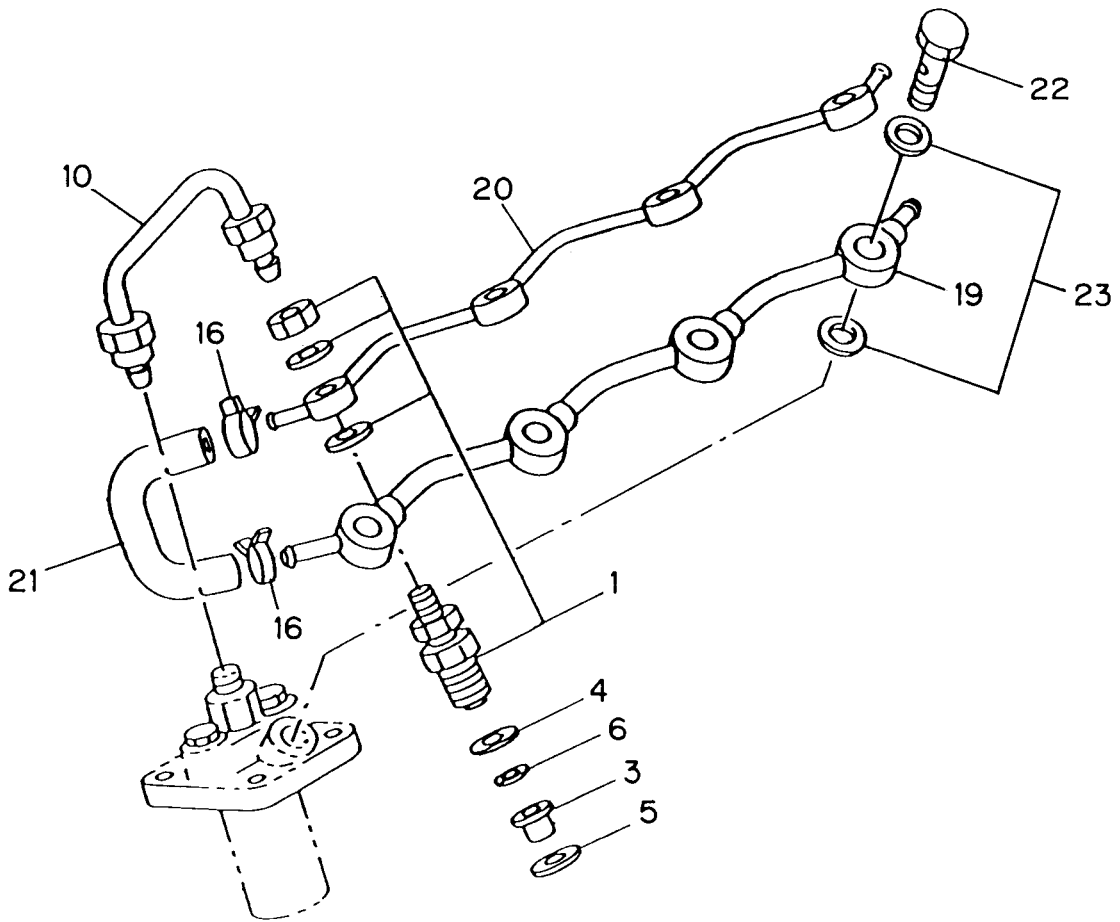
ITEM	PART NUMBER	DESCRIPTION	QTY
1	0A86220303	PUMP ASSY, WATER	1
3	0A86220110	PLUG	1
4	NA	PACKING, WATER PUMP (USE SEALANT)	NA
5	0A86220385	BOLT, WATER PUMP L=45	1
7	0A86220386	BOLT, WATER PUMP L=40	2
	0A86220387	BOLT, WATER PUMP L=60	2
8	0A86220220	NUT	2
9	0A86220304	THERMOSTAT	1
10	0A86220305	PACKING, OUTLET PIPE	1
11	0A86220371	PIPE, WATER OUTLET	1
12	0A86220165	PLUG, SWITCH, PT 1/8	1
13	0A86220324	BOLT, OUTLET PIPE	1
	0A86220386	BOLT, OUTLET PIPE	1
15	0A86220388	PULLEY, FAN D=103	1
19	0A86220389	BOLT, PULLEY W/PUMP	2
20	0A86220306	BELT, COOLING FAN	1

2.2L DIESEL EXHAUST MANIFOLD



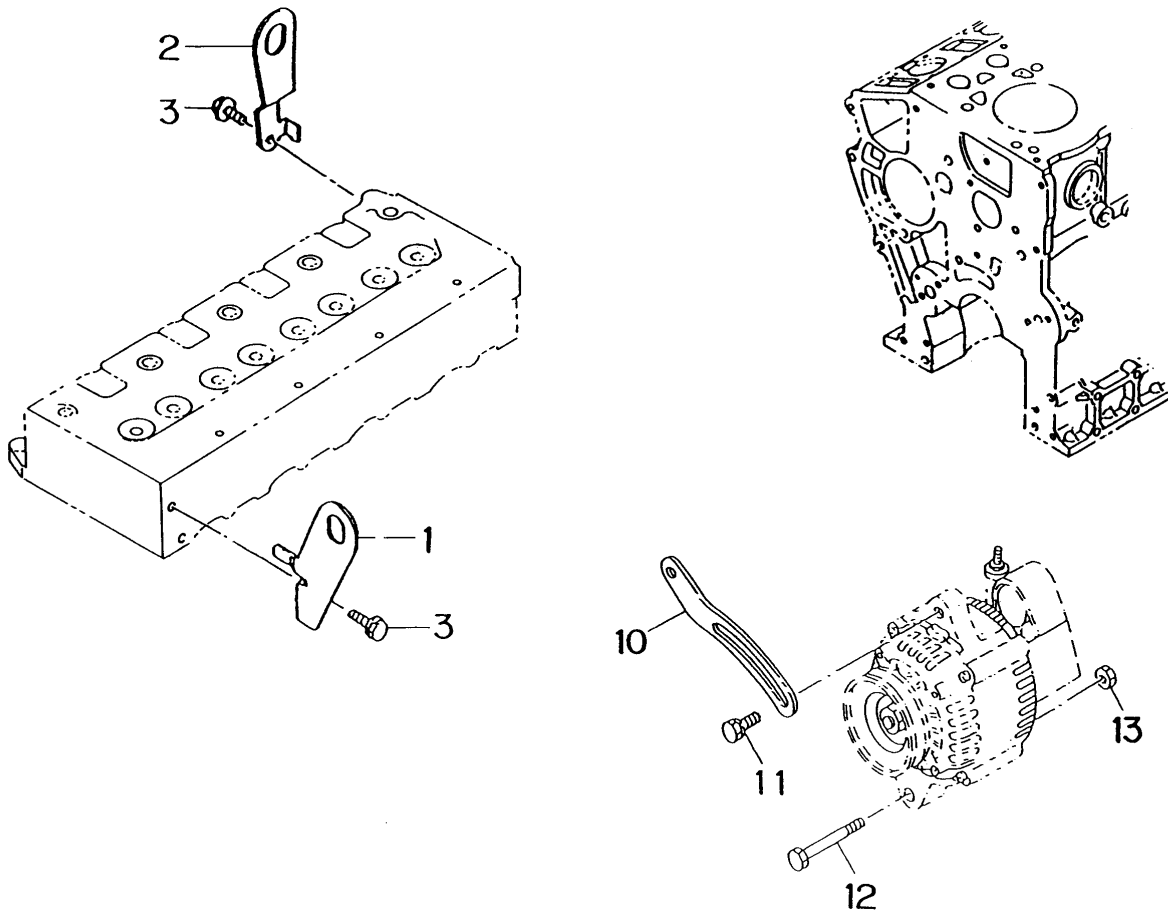
ITEM	PART NUMBER	DESCRIPTION	QTY
1	0A86220307	MANIFOLD, EXH	1
2	0A86220308	GSKT, EXH MANIFOLD	1
3	0A86220220	NUT	2
4	0A86220390	BOLT	6
29	0A86220309	GSKT, EXH PIPE	1

2.2L DIESEL FUEL INJECTION PIPE & NOZZLE



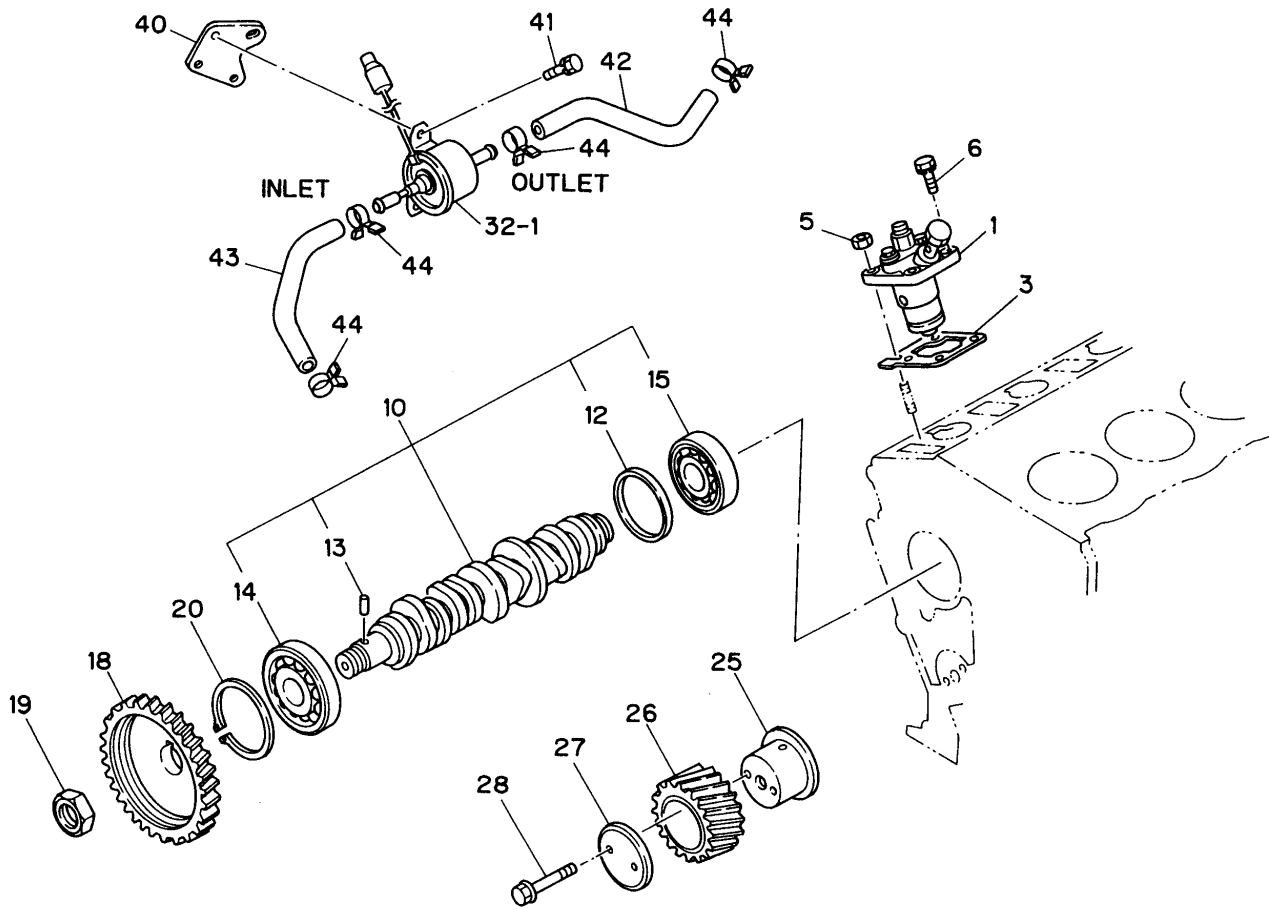
ITEM	PART NUMBER	DESCRIPTION	QTY
1	0A86220310	NOZZLE ASSY, INJ	4
3	0A86220311	HEAT SHEILD, NOZZLE	4
4	0A86220312	GSKT, NOZZLE HOLDER	4
5	0A86220313	GSKT, HEAT SHIELD	4
6	0A86220391	WASHER, CORRUGATED	4
10	0A86220314	PIPE ASSY, INJ	4
16	0A86220392	CLIP, FUEL HOSE	2
19	0A86220315	PIPE ASSY, FUEL, SUCTION	1
20	0A86220316	PIPE ASSY, FUEL LEAK OFF	1
21	0A86220317	HOSE, FUEL, FEED L/OFF	1
22	0A86220393	BOLT, EYE	4
23	0A86220318	GASKET	8

2.2L DIESEL ENGINE HANGER



ITEM	PART NUMBER	DESCRIPTION	QTY
1	0A86220319	HANGER, FRONT	1
2	0A86220320	HANGER, REAR	1
3	0A86220246	BOLT	2
10	0A86220322	PLATE, ADJ, GEN	1
11	0A86220323	BOLT, GEN	1
12	0A86220324	BOLT, ADJ PLATE, GEN	1
13	0A86220325	NUT, GEN	1

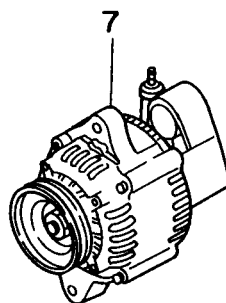
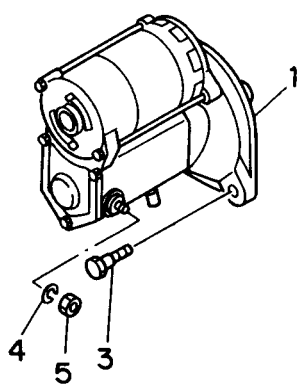
2.2L DIESEL INJECTION PUMP, CAMSHAFT & OTHER PARTS



2.2L DIESEL INJECTION PUMP, CAMSHAFT & OTHER PARTS

ITEM	PART NUMBER	DESCRIPTION	QTY
1	0A86220326	PUMP ASSY, INJ PFR	4
3	0A86220327	SHIM, INJ PUMP, T=0.2	AR
3	0A86220328	SHIM, INJ PUMP, T=0.3	AR
3	0A86220329	SHIM, INJ PUMP, T=0.4	AR
3	0A86220330	SHIM, INJ PUMP, T=0.5	AR
3	0A86220331	SHIM, INJ PUMP, T=0.6	AR
3	0A86220332	SHIM, INJ PUMP, T=0.7	AR
3	0A86220333	SHIM, INJ PUMP, T=0.8	AR
3	0A86220334	SHIM, INJ PUMP, T=1.0	AR
3	0A86220335	SHIM, INJ PUMP, T=1.2	AR
5	0A86220220	NUT	8
6	0A86220324	BOLT	8
10	0A86220338	SHAFT, CAM, INJ PMP & VALVE	1
12	0A86220339	RING, WEAR, CAMSHFT	1
13	0A86220340	PIN, CAMSHAFT	1
14	0A86220341	BEARING, BALL, FRT	1
15	0A86220342	BEARING, BALL, REAR	1
18	0A86220343	GEAR, INJ PUMP & VALVE	1
19	0A86220344	NUT, CAM GEAR	1
20	0A86220345	RING, SNAP, CAMSHFT, FRT	1
25	0A86220346	SHAFT ASSY, IDLE GEAR	1
26	0A86220347	GEAR, W/BUSH, IDLE Z=44	1
27	0A86220348	COLLAR, THRUST, IDLE GEAR	1
28	0A86220349	BOLT, SHAFT	2
32-1	0A86220350	PUMP ASSY, FUEL, ELEC	1
40	0A86220394	BRACKET, FUEL PUMP	1
41	0A86220395	BOLT, FUEL PUMP	2
42	0A86220351	HOSE, F/PUMP-F/PIPE	1
43	0A86220352	HOSE, PUMP-F/FILTER	1
44	0A86220395	CLIP, FUEL HOSE	4

2.2L DIESEL ELECTRICAL PARTS

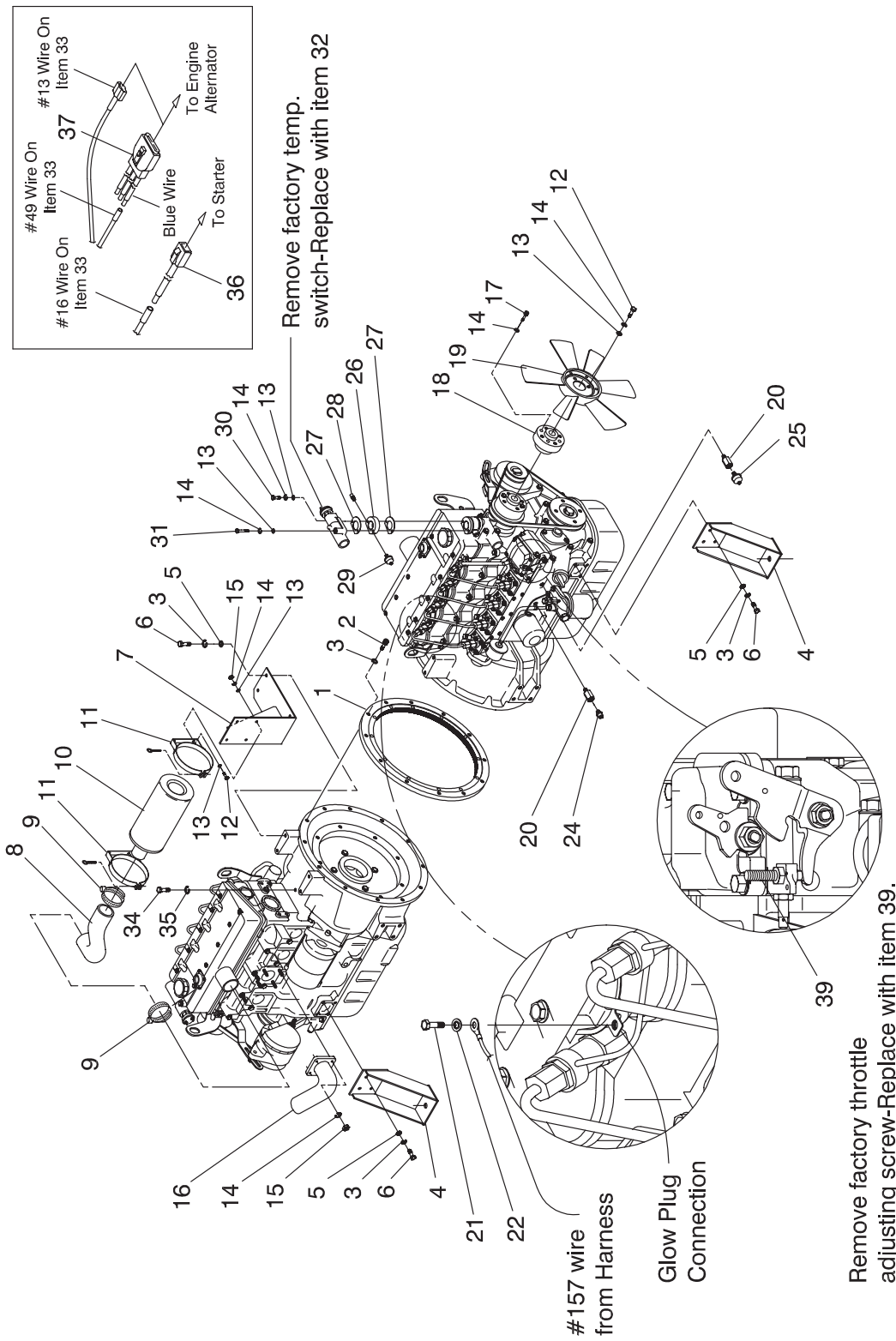


2.2L DIESEL ELECTRICAL PARTS

ITEM	PART NUMBER	DESCRIPTION	QTY
1	0A86220353	STARTER ASSY	1
3	0A86220397	BOLT, STARTER	2
4	0A86220185	WASHER	1
5	0A86220398	NUT, STARTER CABLE	1
7	0A86220354	ALTERNATOR ASSY	1
13	0A86220358	PLUG, GLOW	4

2.2L DIESEL ENGINE COMMON PARTS

GROUP D



EXPLODED VIEW:
ENGINE COMMON PARTS
DRAWING #: 0A9701

PAGE 1 OF 2

REVISION: F-3354-E
DATE: 5/21/01

2.2L DIESEL ENGINE COMMON PARTS

ITEM	PART NUMBER	DESCRIPTION	QTY
1	0A8241	ADAPTOR, SAE4 TO SAE3	1
2	052647	SCREW SHC M10-1.5 X 25 G12.9	12
3	046526	WASHER LOCK M10	24
4	0A8366	MOUNTING FOOT,ENG2.2	2
5	022131	WASHER FLAT 3/8-M10 ZINC	12
6	051756	SCREW HHC M10-1.5 X 20 G8.8	12
7	0A8515	BRKT A/C SUPT 2.2ISU	1
8	0A8984	HOSE, FRMD AIR INLET	1
9	035685	CLAMP HOSE #28 1.32 - 2.25	2
10	062780	AIR CLNR DNLDN FWG	1
11	062781	MOUNTING BAND 5.25"D	2
12	0A6928	SCREW HHC M8-1.25 X 20 SS G8.8	8
13	022145	WASHER FLAT 5/16 ZINC	14
14	022129	WASHER LOCK M8-5/16	18
15	045771	NUT HEX M8-1.25 G8 YEL CHR	8
16	0A8804	EXH TUBE (ENG-FLEX)	1
17	040976	SCREW SHC M8-1.25 X 20 G12.9	4
18	0A8645	ADAPTOR COOLING FAN	1
19	095262	FAN, COOLING 18"	1
20	042574	ADAPTOR 1/8NPTF TO 1/8-28	2
21	074908	SCREW HH TAPTITE M5-0.8 X 10 BP	2
22	022769	WASHER SHAKEPROOF INT #10	2
23	090330	LUG DIS 16-14AWG M-FSTN BR/T (SEE NOTE)	5
24	0A8584	SWITCH OIL PRESSURE HOBBS	1
25	053666	SENDER OIL PRESSURE	1
26	0A8916	SPACER THERMSTAT 2.2	1
	0C3723	SPACER THERMSTAT 2.2	1
27	0A9100	GASKET,THERMOSTAT	2
	0C3724	GASKET THERMSTAT 2.2	2
28	053667	SENDER WATER TEMP	1
29	057522	SENSOR COOLANT LEVEL	1
30	039288	SCREW HHC M8-1.25 X 55 G8.8	1
31	051698	SCREW HHC M8-1.25 X 75 G8.8	1
32	0A6751	SW-TMP 245DEG 3/8NPT	1
33	0A9765	HARNES ENGINE GR25 (NOT SHOWN)	1
34	020619	SCREW HHC 3/8-24 X 1/2 G5	1
35	022237	WASHER LOCK 3/8	1
36	0A9860	STARTER LEAD, 2.2L	1*
37	0A9861	ALTERNATOR LEAD, 2.2L	1*
38	028739	TIE WRAP 3.9" X .10" NAT'L UL (NOT SHOWN)	3
39	051767	SCREW HHC M6-1.0 X 45 G8.8	1

* LEADS COME WITH ENGINE, CRIMP AS SHOWN

NOTE: THE CONNECTIONS ON THE FUEL CUT-OFF SOLENOID AND FUEL PUMP SHOULD BE CUT OFF AND REPLACED WITH ITEM 23. (ITEM 23 IS NOT SHOWN)

