

**PBK30000D**

**GENERAC<sup>®</sup>**  
**POWER SYSTEMS, INC.**

**3.0** LITER

**KIA  
DIESEL**

**ENGINE  
PARTS  
MANUAL**



## 3.0L DIESEL TABLE OF CONTENTS

TABLE OF CONTENTS / LEGEND .....	1
ENGINE SERVICE RECOMMENDATIONS .....	2
QUICK REFERENCE ENGINE PARTS .....	3
CYLINDER HEAD AND COVER .....	4
CYLINDER BLOCK .....	6
OIL PAN AND TIMING COVER .....	8
PISTON, CRANKSHAFT AND FLYWHEEL.....	10
VALVE SYSTEM .....	12
INTAKE AND EXHAUST SYSTEM .....	14
FUEL SYSTEM .....	16
OIL PUMP AND FILTER .....	18
COOLING SYSTEM.....	20
MISCELLANEOUS ENGINE PARTS .....	22
ELECTRICAL SYSTEM .....	24
ENGINE COMMON PARTS — NATURALLY ASPIRATED UNITS .....	26
ENGINE COMMON PARTS — TURBOCHARGED UNITS .....	28
AIR INTAKE FOR TURBOCHARGED UNITS .....	30
ALPHA NUMERIC PARTS INDEX .....	32

## LEGEND

**“AR” AS REQUIRED  
(STD) STANDARD SIZE  
“O.S.” OVERSIZE  
“U.S.” UNDERSIZE**

### NOTICE!

**THE INFORMATION IN THIS MANUAL IS KNOWN TO BE ACCURATE AS OF THE DATE OF RELEASE SHOWN ON THE COVER. HOWEVER, ENGINEERING CHANGES CAN OCCUR WITHOUT NOTICE. TO OBTAIN THE PROPER PARTS, PLEASE BE SURE TO USE THE MODEL NUMBER OF THE UNIT BEING SERVICED WHEN ORDERING FROM THIS MANUAL.**

## 3.0L DIESEL QUICK REFERENCE GUIDE

### ◆ ENGINE OIL RECOMMENDATIONS

The unit has been filled with “break in” engine oil at the factory. Use a high-quality detergent oil classified “For Service CC, SD, SE or SF.” Detergent oils keep the engine cleaner and reduce carbon deposits. Use oil having the following SAE viscosity rating, based on the ambient temperature range anticipated before the next oil change:

#### Engine Lubrication System:

Crankcase Oil Capacity .....6.0 L (6.3 U.S. qts.)

Temperature	Oil Grade (Recommended)
Above 80° F (27° C)	SAE 30W or 15W-40
30° to 80° F (-1° to 27° C)	SAE 20W-20 or 15W-40
Below 32° F (0° C)	SAE 10W or 15W-40

### ◆ COOLANT

Use a mixture of half low silicate, ethylene glycol base antifreeze and half soft water. Use only soft water and only low silicate antifreeze. If desired, you may add a high quality rust inhibitor to the recommended coolant mixture. When adding coolant, always add the recommended 50-50 mixture.

#### Cooling System:

Coolant Capacity

System .....8.5 L (2.0 U.S. gal.)  
Engine.....3.4 L (0.9 U.S. gal.)

### —▲ DANGER ▲—

- ▲ Do not remove the radiator pressure cap while the engine is hot or serious burns from boiling liquid or steam could result.
- ▲ Ethylene glycol base antifreeze is poisonous. Do not use your mouth to siphon coolant from the radiator, recovery bottle or any container. Wash your hands thoroughly after handling. Never store used antifreeze in an open container because animals are attracted to the smell and taste of antifreeze even though it is poisonous to them.

### —▲ CAUTION ▲—

- ▲ Do not use any chromate base rust inhibitor with ethylene glycol base antifreeze, or chromium hydroxide (“green slime”) will form and cause overheating. Engines that have been operated with a chromate base rust inhibitor must be chemically cleaned before adding ethylene glycol base antifreeze. Using any high silicate antifreeze boosters or additives also will cause overheating. We also recommend that you DO NOT use any soluble oil inhibitor for this equipment.

## PERIODIC MAINTENANCE SCHEDULE:

### ◆ AUTHORIZED OPERATOR MAINTENANCE FUNCTIONS

#### Every Month or 100 Hours

(whichever comes first)

- Test standby generator system.
- Inspect battery and cables.
- Check engine oil level.
- Check gearbox oil level (if so equipped).
- Check engine coolant level.
- Check generator ground connections.
- Test/inspect starting aids.

#### Every Three Months or Every 120 Hours

(whichever comes first)

- Inspect and test fuel system and connections.
- Inspect exhaust system.
- Inspect/test fuel supply system.

### ◆ AUTHORIZED SERVICE TECHNICIAN MAINTENANCE FUNCTIONS

#### After First 30 Hours of Operation

- Inspect wiring.
- Change engine crankcase oil and oil filter.
- Inspect engine fan belts.
- Inspect battery and cables.

#### Every Six Months or Every 200 Hours (whichever comes first)

- Change engine oil and filter.
- Lubricate engine controls.
- Service engine air cleaner.
- Service engine fuel filter.
- Inspect AC generator.
- Test engine safety controls.
- Inspect fan belts.
- Check engine coolant level.
- Inspect engine cooling system hoses.
- Check optional starting aids.
- Check battery.
- Check engine compression.
- Check electrical connections.
- Check/test annunciator panel.
- Perform operational test.

## QUICK REFERENCE GUIDE

### Annually or Every 600 Hours

(whichever comes first)

- Check engine valve clearance.
- Test fuel injection nozzles.
- Test injection timing.
- Inspect all wiring.
- Test engine starter operation.
- Drain water from fuel tank.
- Retorque fan bolts.
- Drain and refill gearbox (if so equipped)

### Every Two Years

- Replace all rubber hoses.
- Replace engine fan belts.
- Inspect the Standby Generator System.
- Drain, flush, refill cooling system.

### Every 1,000 Operating Hours

- Inspect engine DC alternator.
- Inspect engine starter.
- Retorque engine mounting brackets.
- Remove/test fuel injection pump.
- Remove/test cooling system thermostat.

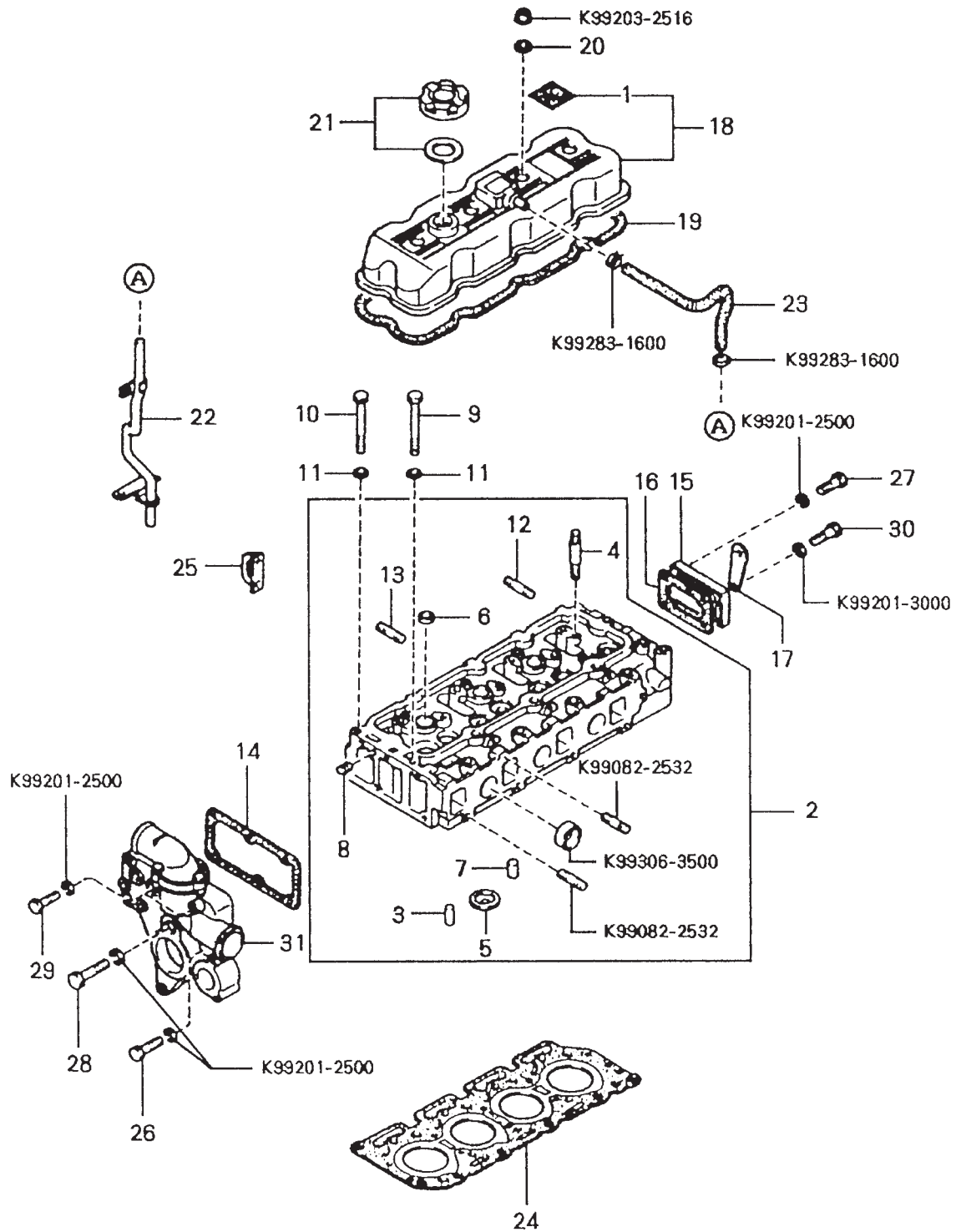
### As Required

- Bleed engine fuel system.

## QUICK REFERENCE ENGINE PARTS

PART NUMBER	DESCRIPTION	QTY
0C3427	AIR CLEANER	1
098110	FUEL FILTER/WATER SEPARATOR ASSEMBLY	1
098110S	FUEL FILTER/WATER SEPARATOR CARTRIDGE ONLY	1
0C29200215	OIL FILTER CARTRIDGE, NATURALLY ASPIRATED UNITS	1
096701	OIL FILTER CARTRIDGE, TURBOCHARGED UNITS	1
0C29200268	THERMOSTAT	1
0C6960	GASKET, THERMOSTAT	2
0C29200166	GLOW PLUG	4
0C29200233	ALTERNATOR	1
0C29200235	STARTER	1
0C29200240	WATER PUMP ASSEMBLY	1
0C29200241	WATER PUMP GASKET	1

# 3.0L DIESEL CYLINDER HEAD AND COVER

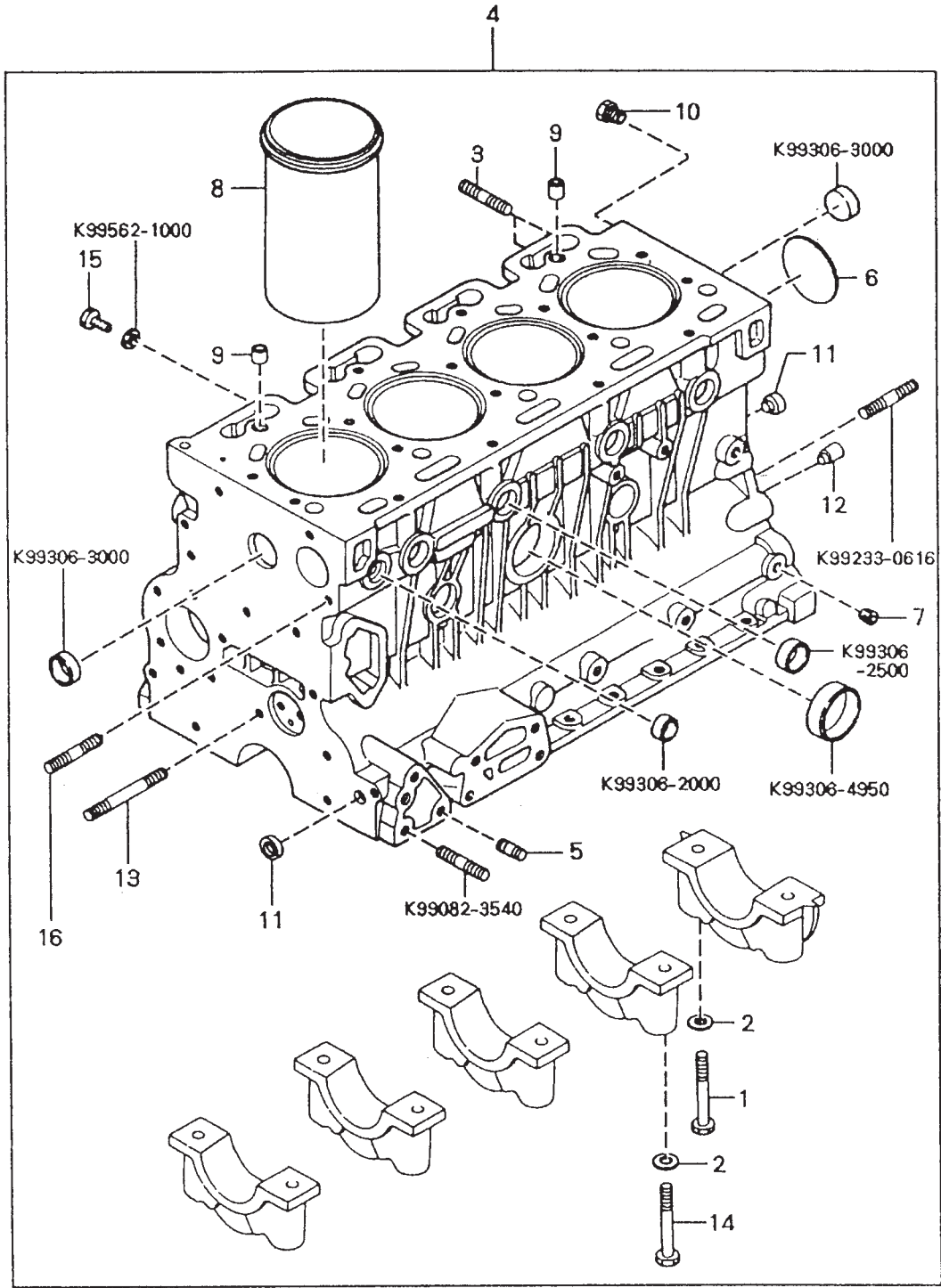


### 3.0L DIESEL CYLINDER HEAD AND COVER

ITEM	PART NUMBER	DESCRIPTION	QTY
1	0C29200216	LABEL, ENGINE EMISSION	1
2	0C29200217	HEAD ASSY, CYLINDER	1
3	0C29200153	PIPE, SEAL	4
4	0C29200178	STUD, ROCKER BRACKET	2
5	0C29200218	INSERT, COMB. CHAMBER	4
6	0969540105	CAP, SEALING	3
7	0C29200103	WELCH WASHER INSERT	4
8	0969540107	PLUG, OIL HOSE	1
9	0C29200104	BOLT, CYLINDER HEAD	13
10	0C29200236	BOLT, CYLINDER HEAD	7
11	0969540110	WASHER, PLAIN	20
12	0C29200188	STUD, EXH. MANIFOLD	6
13	0C29200105	STUD, EXH. MANIFOLD	2
14	0C29200106	JOINT, THERMO CASE	1
15	0969540119	PLATE, CYLINDER HEAD RR	1
16	0969540120	JOINT, CYLINDER HEAD PLATE	1
17	0C29200146	HANGER, ENGINE	1
18	0C29200219	COVER ASSY, HEAD	1
19	0969540123	GASKET, CYLINDER HEAD COVER	1
20	0C29200179	WASHER, SEALING	4
21	0C29200201	CAP ASSY, OIL FILLER	1
22	0C29200189	PIPE ASSY, BREATHER	1
23	0C29200202	HOSE, BREATHER	1
24	0C29200220	GASKET, CYLINDER HEAD	1
25	0C29200161	HANGER, ENGINE	1
26	0C29200258	BOLT	4
27	0969540178	BOLT	4
28	0C29200119	BOLT	1
29	0C29200120	BOLT	2
30	0969540133	BOLT	4
31	0C29200246	CASE, ASSY, THERMO	1

**NOTE:** See Appendix on page 32 for listing and description of items shown with Alph-Numeric reference numbers.

# 3.0L DIESEL CYLINDER BLOCK

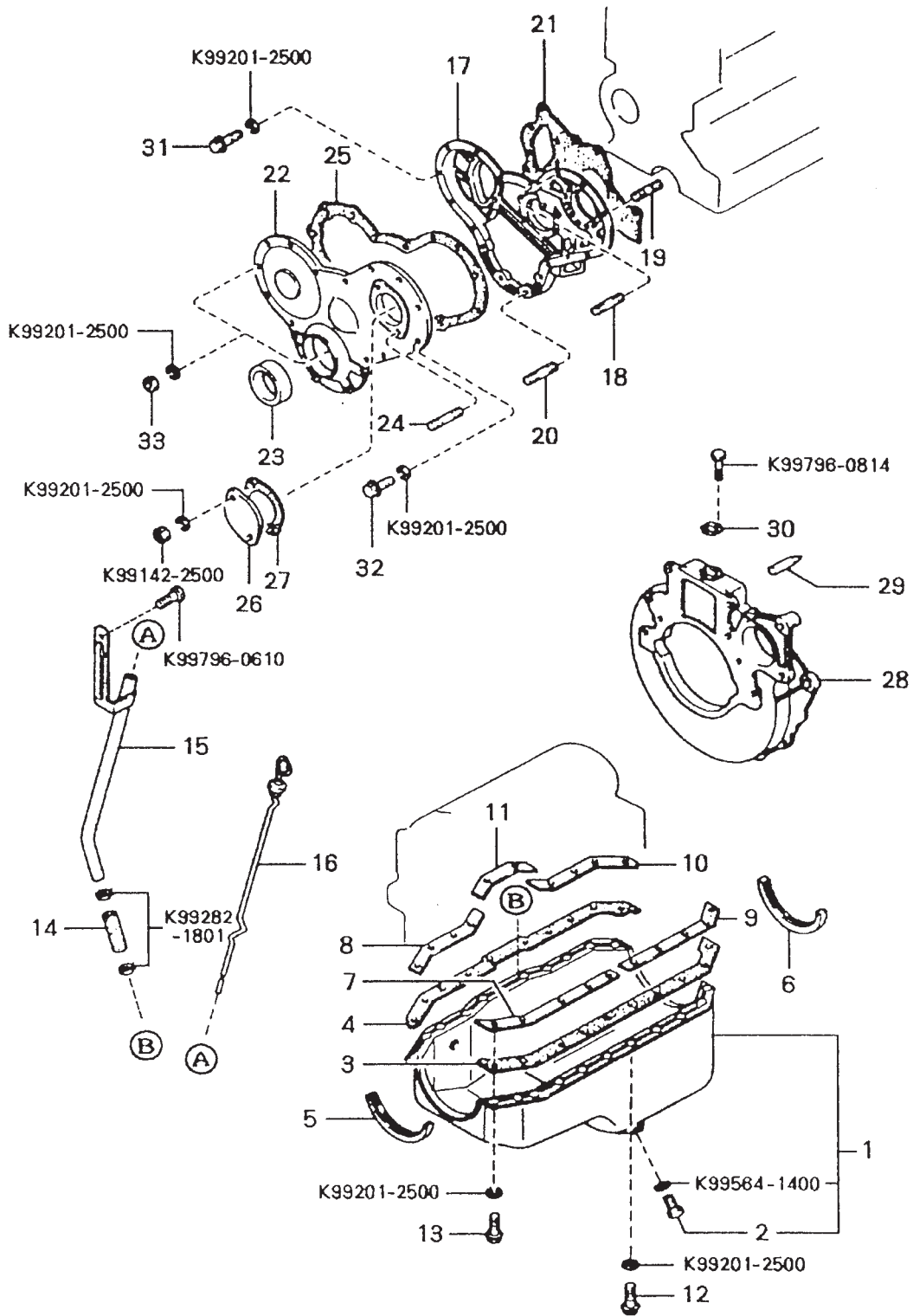


### 3.0L DIESEL CYLINDER BLOCK

ITEM	PART NUMBER	DESCRIPTION	QTY
1	0C29200104	BOLT, CYLINDER HEAD	2
2	0969540110	WASHER, PLAIN	10
3	0C29200250	STUD	2
4	0C29200238	BLOCK ASSY, CYLINDER	1
5	0969540140	PLUG	1
6	0C29200107	PLUG, CAMSHAFT	1
7	0969540143	PLUG, CYLINDER BLOCK	3
8	0C29200156	CYLINDER LINER	4
9	0C29200108	THIMBLE PIN	2
10	0969540145	PLUG	1
11	0969540146	BLIND PLUG	2
12	0969540147	DOWEL PIN, END PLATE	2
13	0C29200109	STUD, IDLER GEAR	2
14	0969540149	BOLT, BEARING CAP	8
15	0C29200237	BOLT, CYLINDER BLOCK	1
16	0C29200257	STUD	1

**NOTE:** See Appendix on page 32 for listing and description of items shown with Alph-Numeric reference numbers.

# 3.0L DIESEL OIL PAN AND TIMING COVER

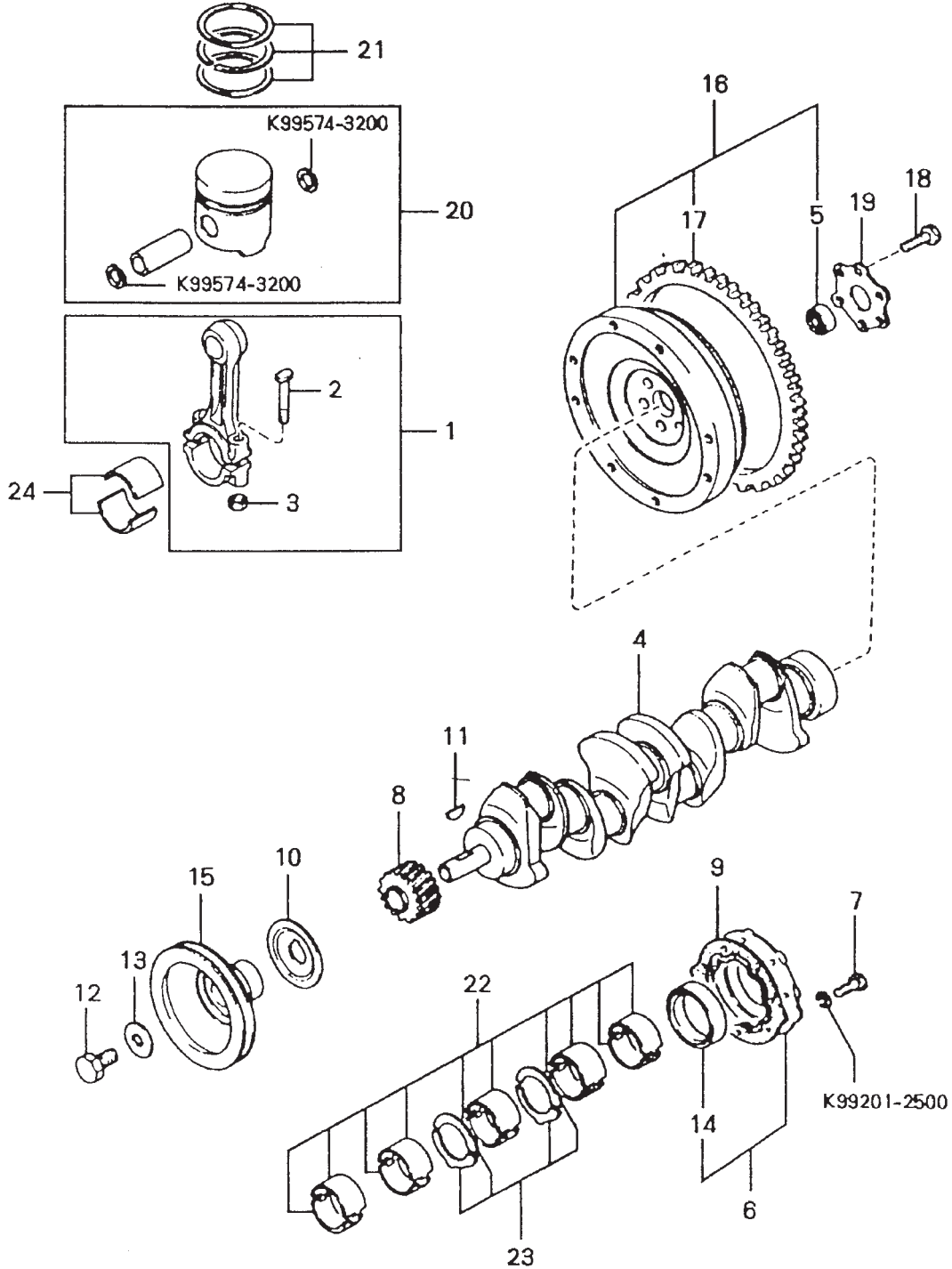


### 3.0L DIESEL OIL PAN AND TIMING COVER

ITEM	PART NUMBER	DESCRIPTION	QTY
1	0C29200255	PAN ASSY, OIL	1
2	0C29200274	PLUG	1
3	0C29200157	GASKET, OIL PAN, LH	1
4	0C29200158	GASKET, OIL PAN, RH	1
5	0C29200110	GASKET, OIL PAN, FR	1
6	0C29200111	GASKET, OIL PAN, RR	1
7	0C29200203	STIFFENER, FR, LH	1
8	0C29200204	STIFFENER, FR, RH	1
9	0C29200196	STIFFENER, RR, LH	1
10	0C29200205	STIFFENER, REAR, LH	1
11	0C29200206	STIFFENER, CENTER, RH	1
12	0C29200197	BOLT, OIL PAN	18
13	0C29200198	BOLT	2
14	0C29200159	HOLDER, OIL GAGE PIPE	1
15	0C29200221	PIPE ASSY, OIL LEVEL	1
16	0C29200222	GAGE ASSY, OIL LEVEL	1
17	0C29200207	CASE, TIMING GEAR	1
18	0C29200160	STUD	1
19	0C29200149	STUD, FUEL PUMP	2
20	0C29200208	STUD	5
21	0C29200112	JOINT, TIMING CASE	1
22	0C29200209	COVER, TIMING CASE	1
23	0C29200185	SEAL, OIL	1
24	0969540169	STUD, GEAR COVER	2
25	0C29200256	JOINT, TIMING CASE	1
26	0969540172	COVER, FUEL PUMP GEAR	1
27	0C29200113	JOINT, GEAR COVER	1
28	0C29200223	HOUSING ASSY, FLYWHEEL	1
29	0C29200114	PIN, TOP INDICATOR	1
30	0C29200253	COVER, SUB ASSY, FLYWHEEL	1
31	0C29200119	BOLT	7
32	0C29200120	BOLT	7
33	0969540272	NUT	8

**NOTE:** See Appendix on page 32 for listing and description of items shown with Alph-Numeric reference numbers.

# 3.0L DIESEL PISTON, CRANKSHAFT AND FLYWHEEL

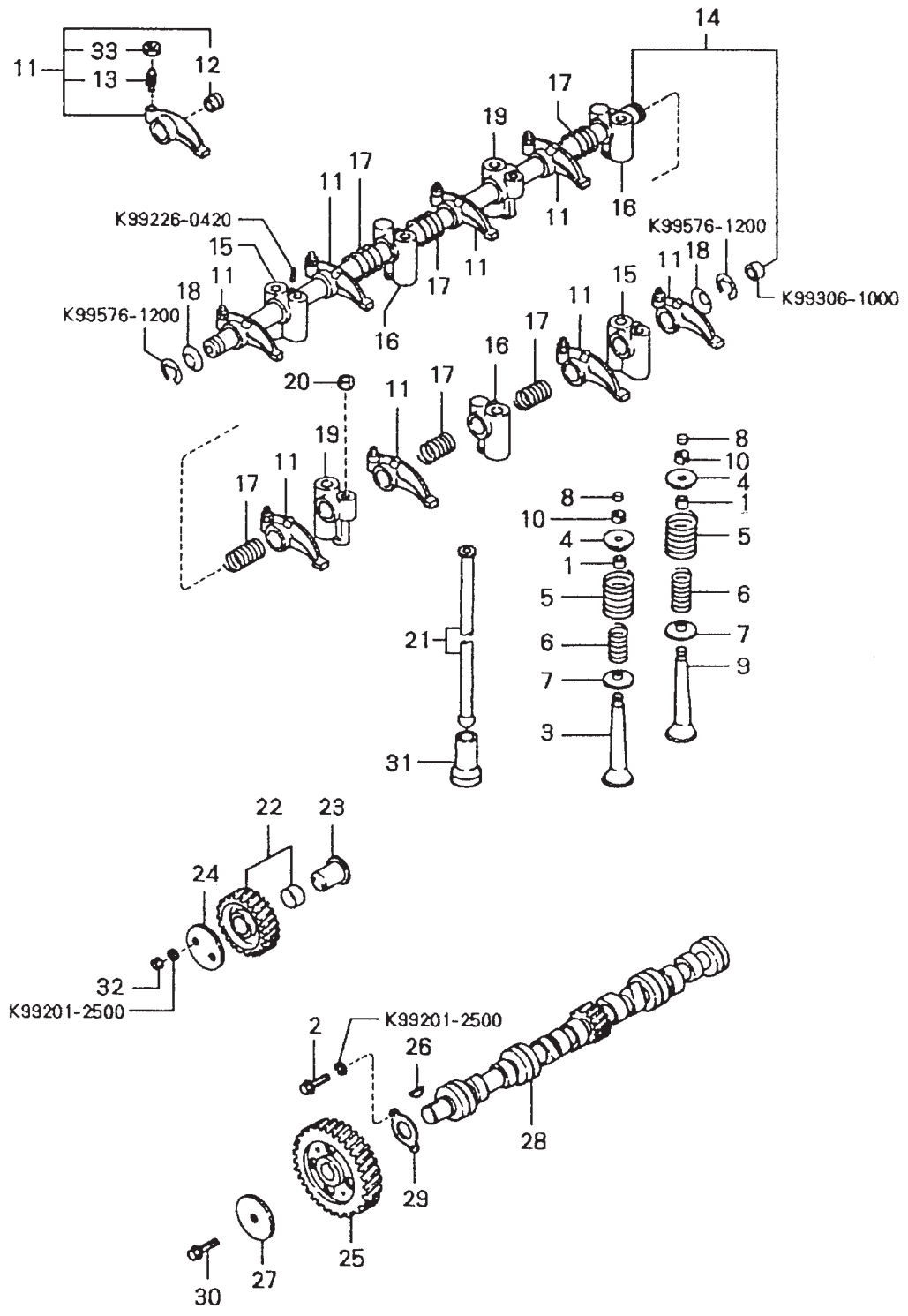


### 3.0L DIESEL PISTON, CRANKSHAFT AND FLYWHEEL

ITEM	PART NUMBER	DESCRIPTION	QTY
1	0C29200162	CONN ROD ASSY	4
2	0C29200115	BOLT, CONN ROD	8
3	0C29200147	NUT, CONN ROD	8
4	0C29200163	CRANKSHAFT	1
5	0C29200273	PILOT BEARING, CRANK	1
6	0C29200270	COVER ASSY, REAR	1
7	0C29200142	BOLT	8
8	0C29200116	GEAR, CRANKSHAFT	1
9	0C29200271	GASKET, REAR COVER	1
10	0C29200184	DEFLECTOR, OIL	1
11	0969540192	KEY, CRANK GEAR	1
12	0969540193	BOLT, CRANKSHAFT	1
13	0969540194	WASHER	1
14	0C29200269	SEAL, OIL (PYUNG HWA)	1
	0C29200187	SEAL OIL (KOREAN FRENCH)	1
15	0C29200239	PULLEY, CRANKSHAFT	1
16	0C29200224	FLYWHEEL ASSY	1
17	0C29200143	GEAR, RING	1
18	0C29200117	BOLT, LOCK	6
19	0C29200254	WASHER, FLYWHEEL	1
20	0C29200247	PISTON SET	4
21	0C29200248	RING SET	4
22	0C29200173	METAL SET, MAIN BEARING, STD	1
	0C29200174	METAL SET, MAIN BEARING, O.S. 0.25	1
	0C29200175	METAL SET, MAIN BEARING, O.S. 0.50	1
	0C29200176	METAL SET, MAIN BEARING, O.S. 0.75	1
	0C29200177	METAL SET, MAIN BEARING, O.S. 1.00	1
23	0C29200190	T/METAL SET, STD	1
	0C29200191	T/METAL SET, O.S. 0.25	1
	0C29200192	T/METAL SET, O.S. 0.50	1
	0C29200193	T/METAL SET, O.S. 0.75	1
	0C29200194	T/METAL SET, O.S. 1.00	1
24	0C29200168	METAL SET, CONN ROD, STD	1
	0C29200169	METAL SET, CONN ROD, O.S. 0.25	1
	0C29200170	METAL SET, CONN ROD, O.S. 0.50	1
	0C29200171	METAL SET, CONN ROD, O.S. 0.75	1
	0C29200172	METAL SET, CONN ROD, O.S. 1.00	1

**NOTE:** See Appendix on page 32 for listing and description of items shown with Alph-Numeric reference numbers.

# 3.0L DIESEL VALVE SYSTEM

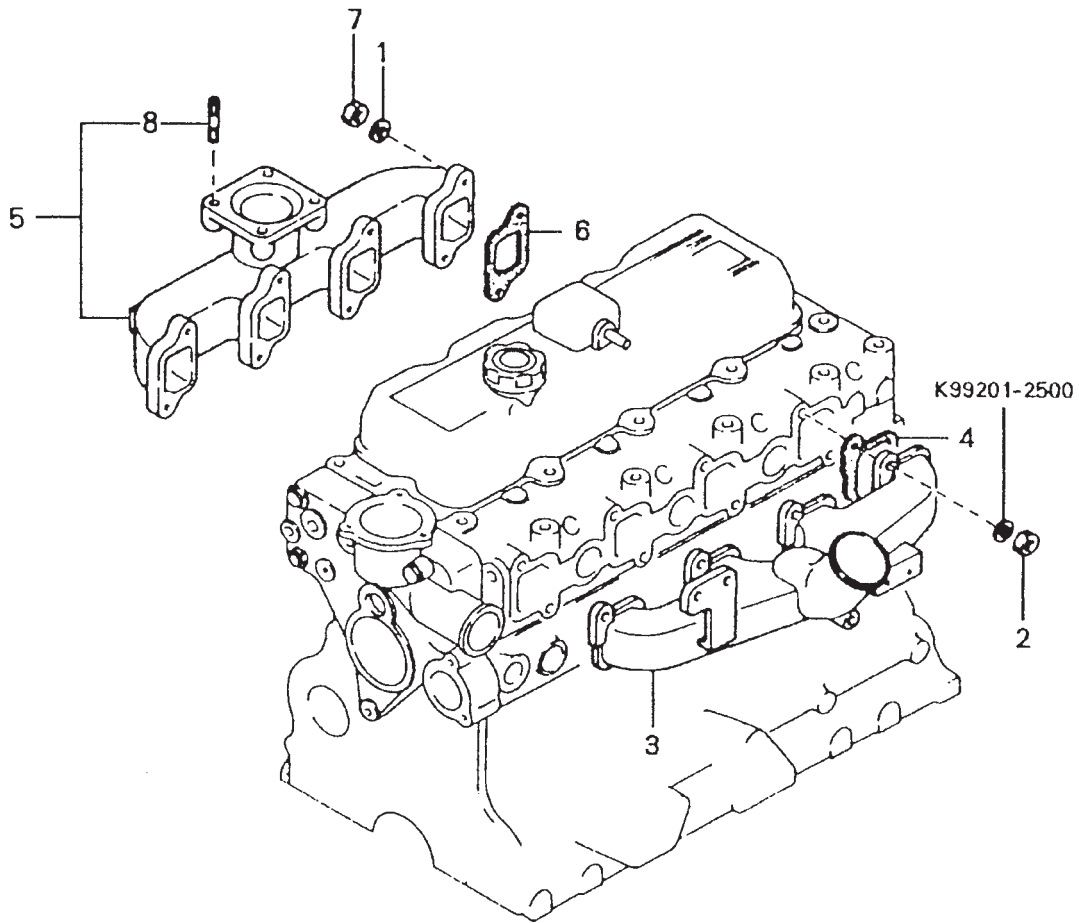


### 3.0L DIESEL VALVE SYSTEM

ITEM	PART NUMBER	DESCRIPTION	QTY
1	0969540117	SEAL, VALVE	8
2	0969540178	BOLT	2
3	0969540228	VALVE, INLET	4
4	0969540230	CAP, VALVE	8
5	0C29200122	VALVE SPRING, OUTER	8
6	0C29200123	VALVE SPRING, INNER	8
7	0C29200124	WASHER, VALVE SPRING	8
8	0969540235	CAP, VALVE	8
9	0969540237	VALVE, EXHAUST	4
10	0C29200125	COTTER	16
11	0C29200199	ARM ASSY, ROCKER	8
12	0C29200186	BUSH, ROCKER LEVER	8
13	0C29200126	SCREW, TAPPET ADJUST	8
14	0969540242	SHAFT ASSY, ROCKER	1
15	0969540243	BRACKET, ROCKER SHAFT	2
16	0969540244	BRACKET, ROCKER SHAFT	3
17	0C29200127	SPRING, ROCKER SHAFT	6
18	0C29200128	WASHER, WAVE	2
19	0969540247	BRACKET, ROCKER SHAFT	2
20	0969540248	NUT	2
21	0C29200129	PUSH ROD	8
22	0C29200130	IDLE GEAR ASSY	1
23	0C29200131	SPINDLE, IDLE GEAR	1
24	0C29200132	THRUST PLATE, IDLER	1
25	0C29200133	GEAR, CAMSHAFT	1
26	0C29200134	KEY, CAM GEAR	1
27	0C29200148	WASHER, PLAIN	1
28	0C29200212	CAMSHAFT	1
29	0C29200213	THRUST PLATE, CAM	1
30	0C29200251	BOLT, CAMSHAFT	1
31	0C29200102	TAPPET	8
32	0969540272	NUT	2
33	0C29200135	NUT	8

**NOTE:** See Appendix on page 32 for listing and description of items shown with Alph-Numeric reference numbers.

### 3.0L DIESEL INTAKE AND EXHAUST SYSTEM

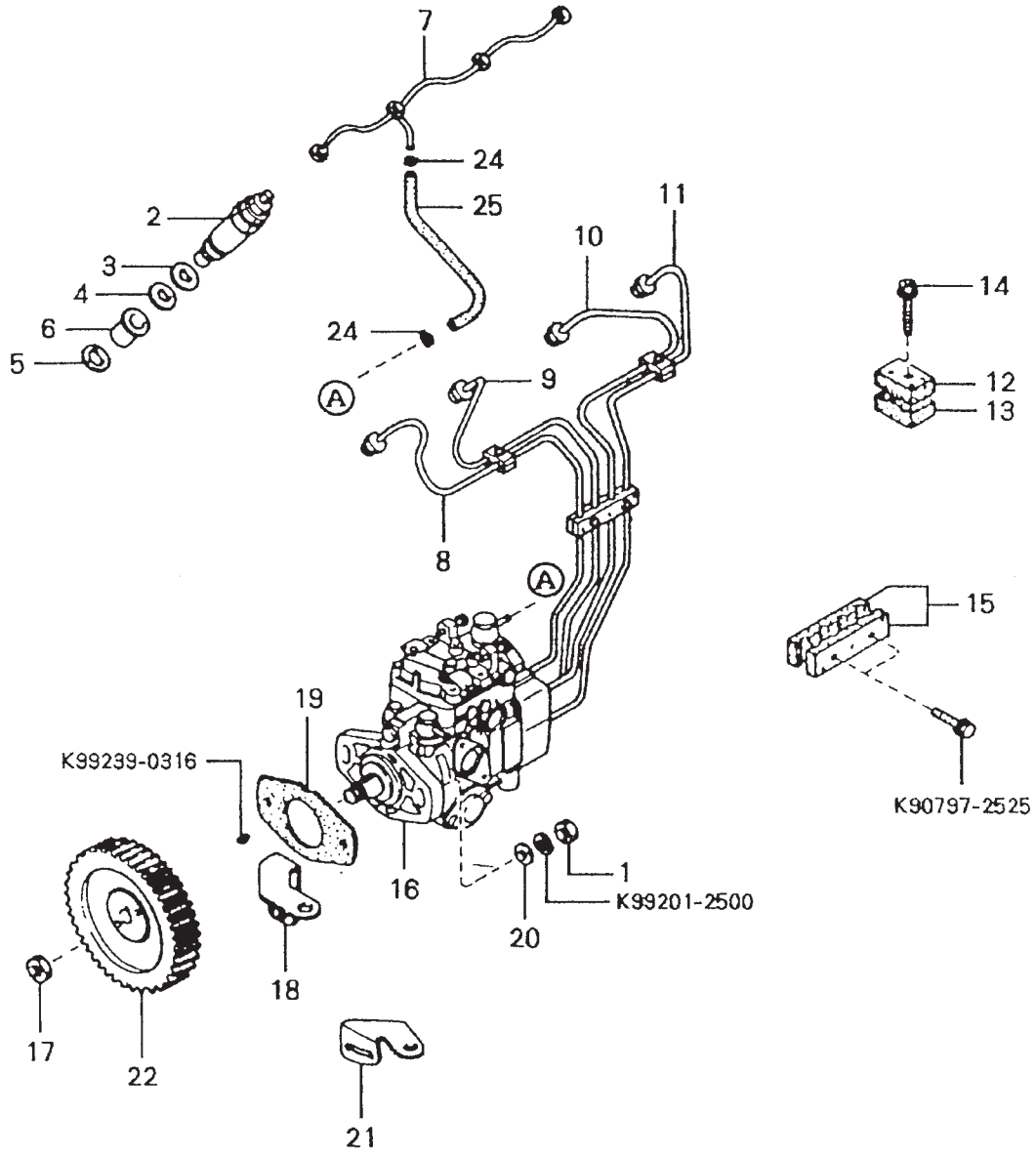


### 3.0L DIESEL INTAKE AND EXHAUST SYSTEM

ITEM	PART NUMBER	DESCRIPTION	QTY
1	0969540265	WASHER, PLAIN	8
2	0969540272	NUT	8
3	0C29200225	MANIFOLD, INTAKE	1
4	0969540264	JOINT, INTAKE MANIFOLD	4
5	0C29200226	EXHAUST MANIFOLD ASSY	1
6	0969540269	GASKET, EXHAUST MANIFOLD	4
7	0969540270	NUT, EXHAUST MANIFOLD	8
8	0969540268	STUD, EXHAUST PIPE	4

**NOTE:** See Appendix on page 32 for listing and description of items shown with Alph-Numeric reference numbers.

# 3.0L DIESEL FUEL SYSTEM

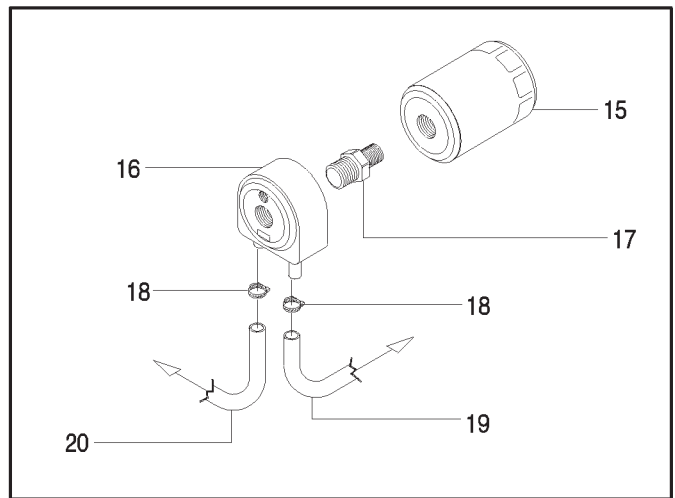
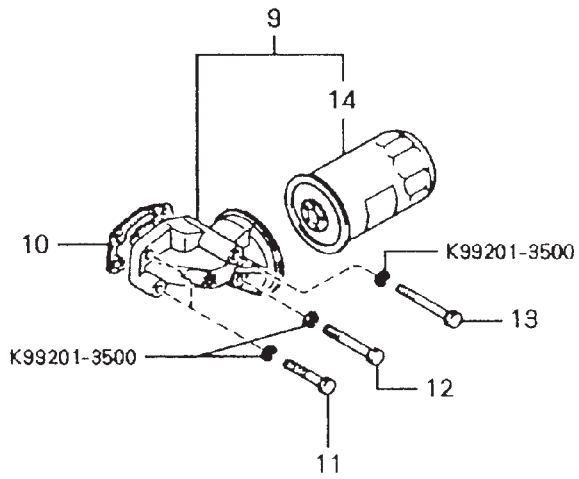
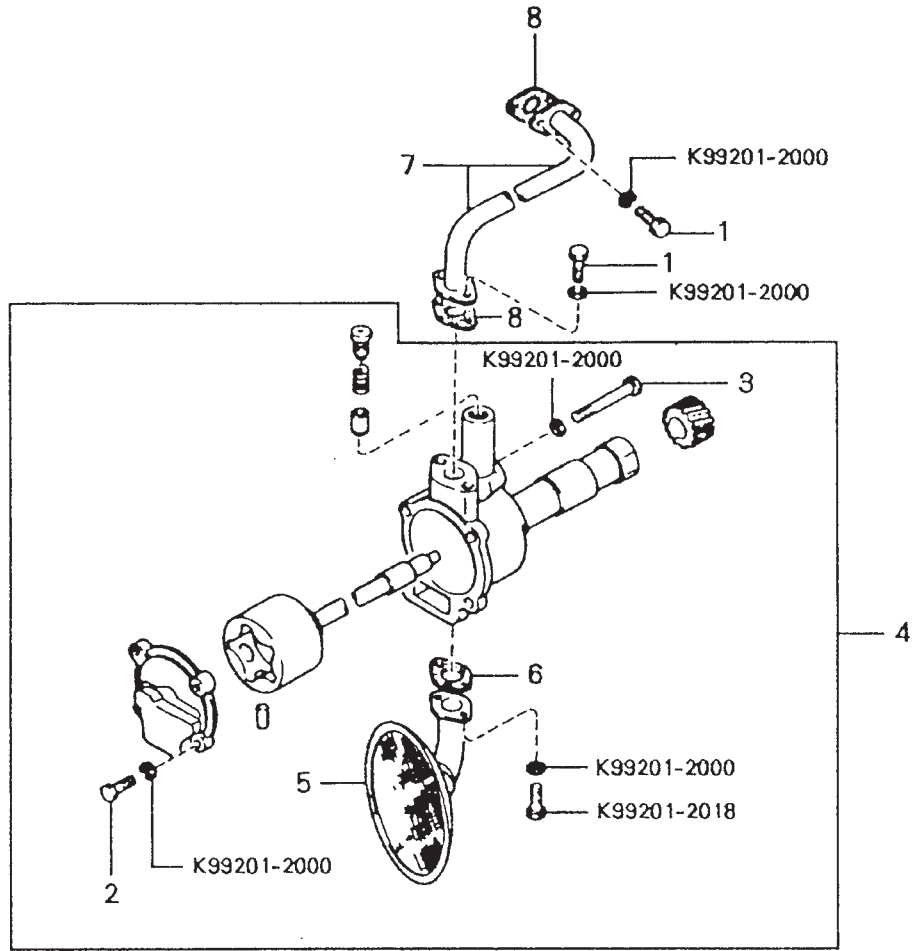


### 3.0L DIESEL FUEL SYSTEM

ITEM	PART NUMBER	DESCRIPTION	QTY
1	0969540272	NUT	2
2	0969540273	HOLDER ASSY, NOZZLE	4
3	0C29200137	WASHER, NOZZLE	4
4	0C29200154	GASKET	4
5	0C29200155	WASHER, CORRUGATE	4
6	0969540278	HEAT SHIELD, NOZZLE	4
7	0C29200227	PIPE, FUEL LEAK	1
8	0C29200228	PIPE, FUEL INJECTION	1
9	0C29200229	PIPE, FUEL INJECTION	1
10	0C29200230	PIPE, FUEL INJECTION	1
11	0C29200231	PIPE, FUEL INJECTION	1
12	0969540287	PIPE, FUEL INJECTION	2
13	0969540310	CLIP, INJECTION PIPE	2
14	0C29200263	BOLT	2
15	0969540292	CLIP, INJECTION PIPE	2
16	0C29200232	INJECTION PUMP	1
17	0C29200267	NUT	1
18	0C29200150	STAY ASSY, F.I.P.	1
19	0C29200151	PACKING, FUEL PUMP	1
20	0969540300	WASHER, PLAIN	2
21	0C29200152	STAY ASSY, F.I.P.	1
22	0C29200264	GEAR, F.I.P.	1
23	0C29200249	FILTER, FUEL	1
24	0C29200145	CLIP	2
25	0969540308	HOSE, FUEL	1
26	0C29200272	HOSE, FUEL	1

**NOTE:** See Appendix on page 32 for listing and description of items shown with Alph-Numeric reference numbers.

# 3.0L DIESEL OIL PUMP AND FILTER



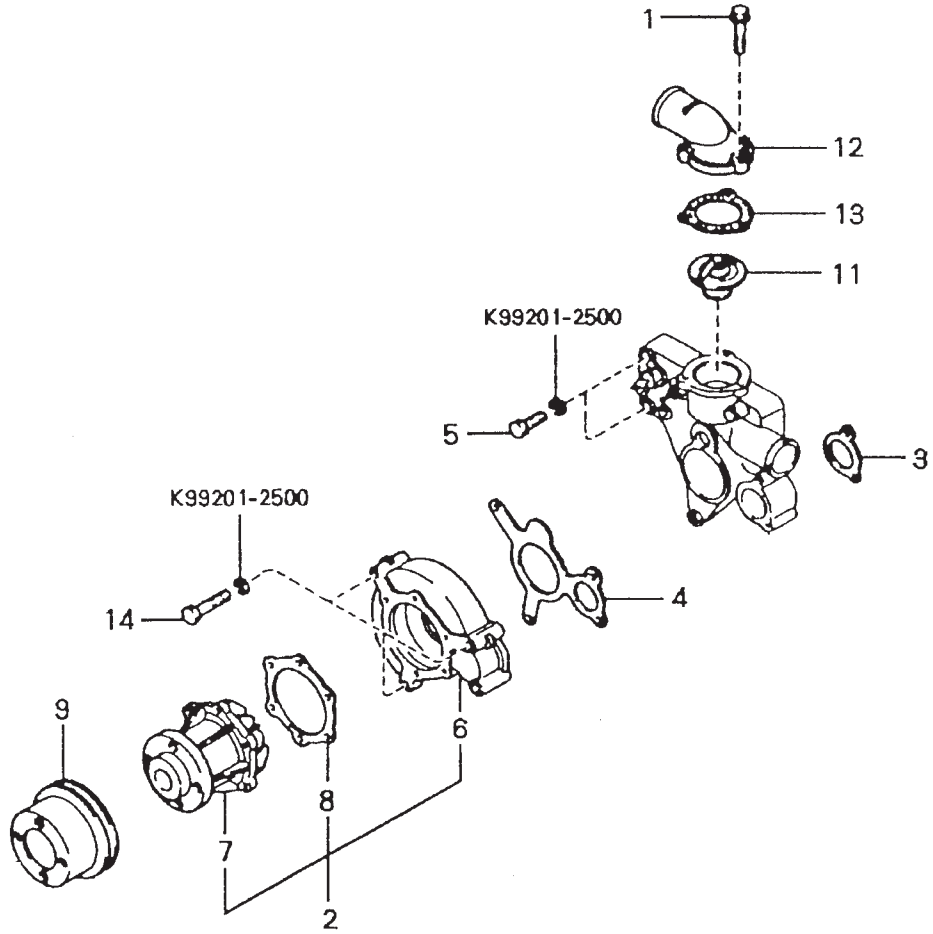
### 3.0L DIESEL OIL PUMP AND FILTER

ITEM	PART NUMBER	DESCRIPTION	QTY
1	0C29200118	BOLT	4
2	0C29200210	BOLT	2
3	0C29200211	BOLT	2
4	0C29200214	PUMP ASSY, OIL	1
5	0C29200164	STRAINER ASSY, OIL	1
6	0C29200138	JOINT, OIL STRAINER	1
7	0C29200165	PIPE, ASSY, OIL	1
8	0C29200276	JOINT, OIL PIPE FLANGE	2
9	0C29200195	FILTER ASSY, OIL (SEE NOTE)	1
10	0C29200180	GA1SKET, OIL FILTER	1
11	0C29200181	BOLT	2
12	0C29200182	BOLT	1
13	0C29200183	BOLT	1
14	0C29200215	CARTRIDGE, OIL FILTER (NATURALLY ASPIRATED UNITS)	1
15	096701	CARTRIDGE, OIL FILTER (TURBOCHARGED UNITS)	1
16	096765	OIL COOLER (TURBOCHARGED UNITS)	1
17	0C5489	CONNECTOR, OIL COOLER (TURBOCHARGED UNITS)	1
18	057822	HOSE CLAMP #8 (TURBOCHARGED UNITS)	2
19	065386	HOSE, 21" LONG (TURBOCHARGED UNITS)	1
20	065386	HOSE, 38" LONG (TURBOCHARGED UNITS)	1

**NOTE:** TO REPLACE THE OIL FILTER ASSEMBLY ON NATURALLY ASPIRATED UNITS, PURCHASE ITEM 9 AS WELL AS ANY NECESSARY HARDWARE FROM THE EXPLODED VIEW. TO REPLACE THE OIL FILTER ASSEMBLY ON TURBOCHARGED UNITS, PURCHASE ITEMS 9, 15, 16 & 17 AS WELL AS ANY NECESSARY HARDWARE. THE OIL FILTER CARTRIDGE THAT COMES AS PART OF ITEM 9 IS REPLACED BY ITEM 15.

**NOTE:** See Appendix on page 32 for listing and description of items shown with Alph-Numeric reference numbers.

# 3.0L DIESEL COOLING SYSTEM



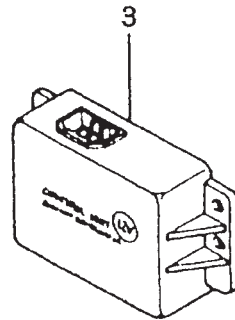
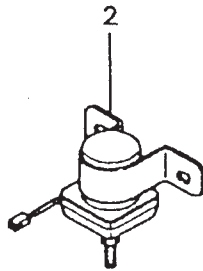
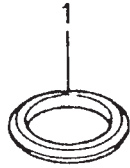
### 3.0L DIESEL COOLING SYSTEM

ITEM	PART NUMBER	DESCRIPTION	QTY
1	***	SEE NOTE	
2	0C29200240	PUMP ASSY, WATER	1
3	0C29200260	JOINT, WATER PUMP	1
4	0C29200241	JOINT, WATER PUMP	1
5	0C29200259	BOLT, WATER BYPASS	2
6	0C29200242	BODY, WATER PUMP	1
7	0C29200243	HOUSING ASSY, WATER PUMP BEARING	1
8	0C29200261	GASKET, WATER PUMP	1
9	0C29200244	PULLEY, WATER PUMP	1
11	0C29200268	THERMOSTAT	1
12	0C29200266	COVER, THERMO CASE	1
13	***	SEE NOTE	
14	0C29200262	BOLT, HOSE, TYPE A	3

**\*\*\*NOTE:** SEE EXPLODED VIEW OF ENGINE COMMON PARTS ON PAGES 28-33.

**NOTE:** See Appendix on page 32 for listing and description of items shown with Alph-Numeric reference numbers.

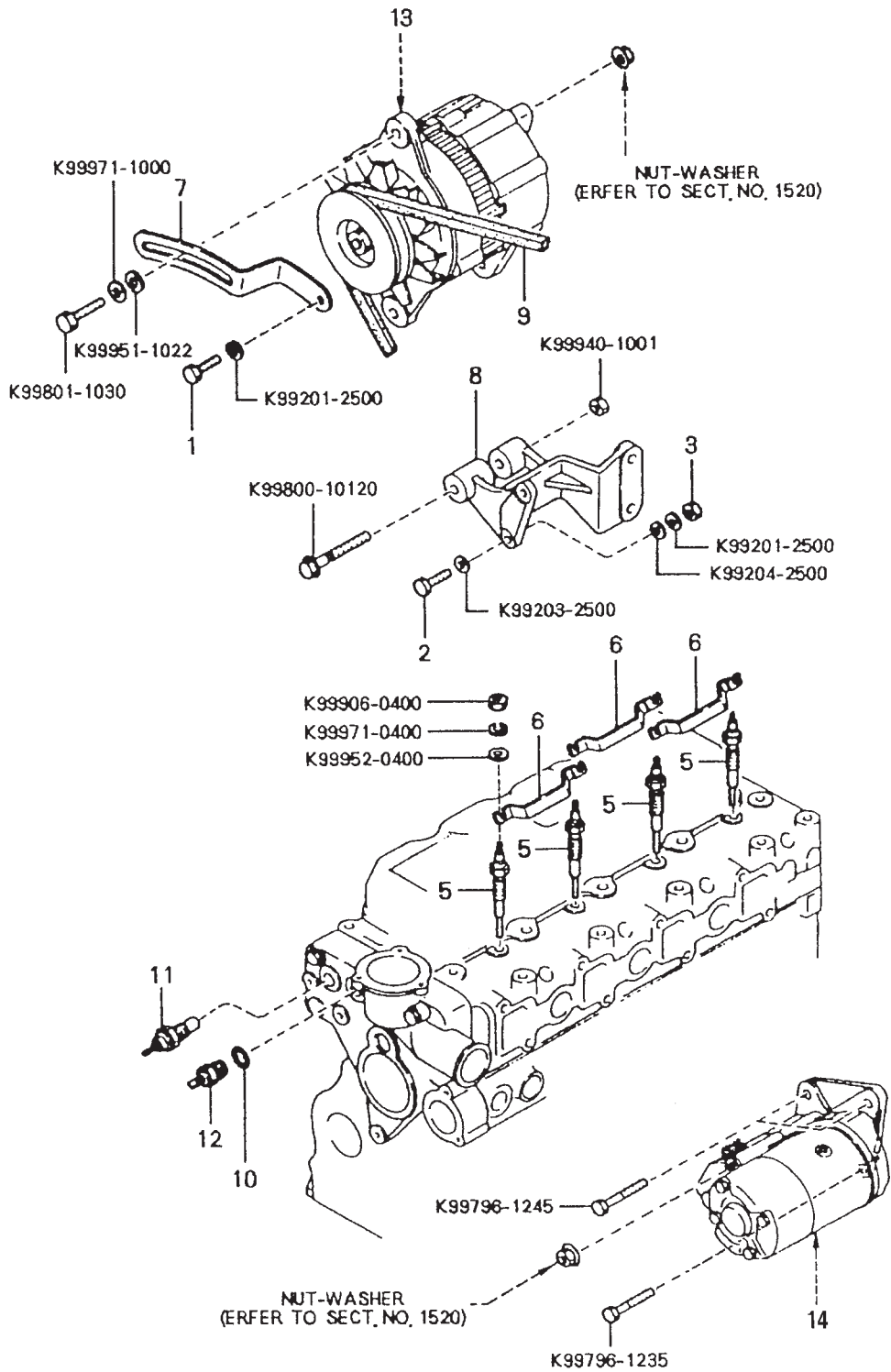
### 3.0L DIESEL MISCELLANEOUS ENGINE PARTS



### 3.0L DIESEL MISCELLANEOUS ENGINE PARTS

ITEM	PART NUMBER	DESCRIPTION	QTY
1	0C29200277	RING, SEAL	1
2	0C29200278	RELAY, GLOW	1
3	0C29200279	UNIT, CONTROL	1
4	0C29200280	NUT	4
5	0C29200281	WASHER, SPRING	4
6	0C29200282	NUT, ALTERNATOR	1
7	0C29200283	NUT, STARTER	1

# 3.0L DIESEL ENGINE ELECTRICAL SYSTEM



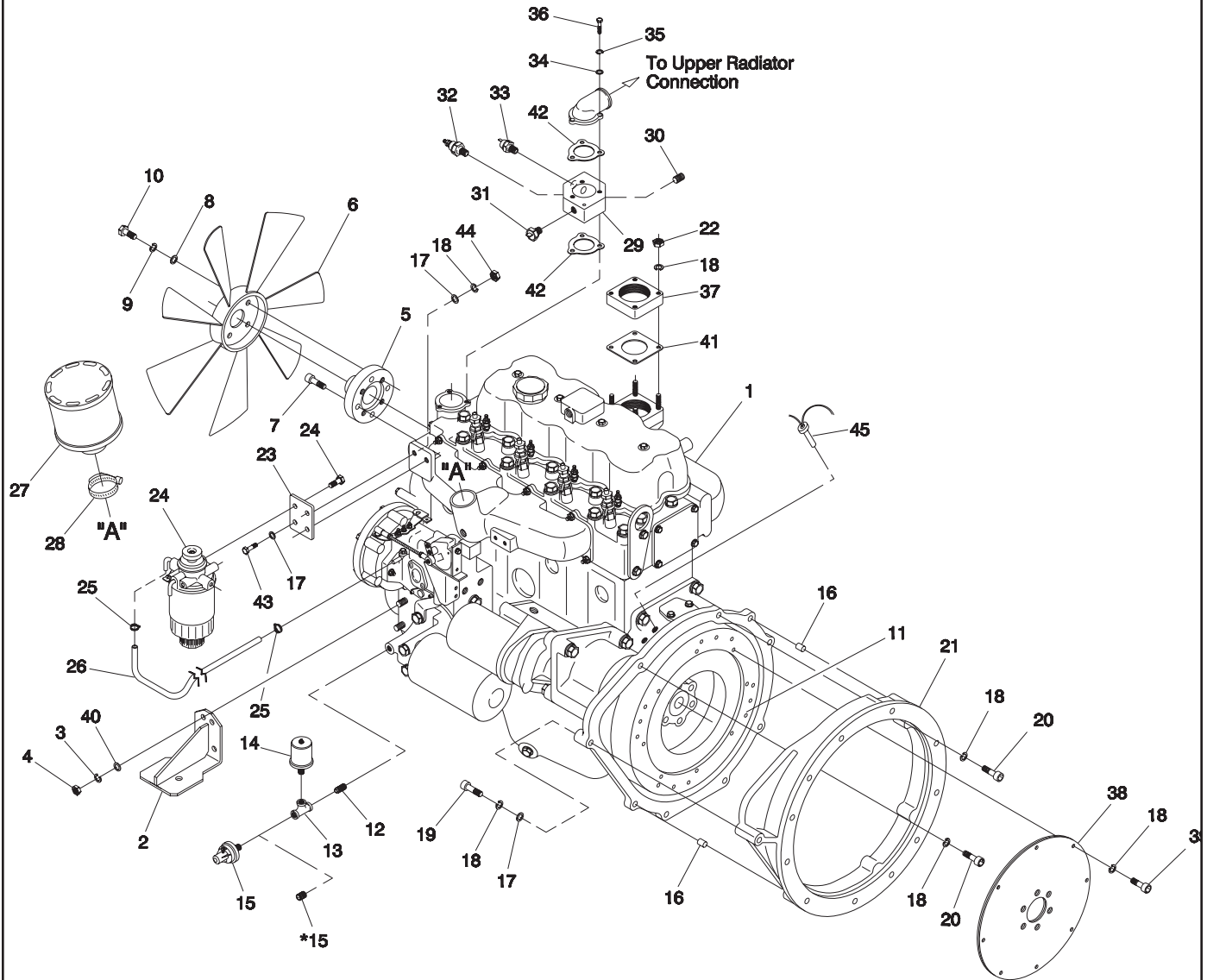
### 3.0L DIESEL ENGINE ELECTRICAL SYSTEM

ITEM	PART NUMBER	DESCRIPTION	QTY
1	0C29200119	BOLT	1
2	0C29200121	BOLT	2
3	0969540272	NUT	2
4	0C29200136	NUT	2
5	0C29200166	PLUG, GLOW	4
6	0C29200167	CONNECTOR, GLOW PLUG	3
7	0C29200252	STRAP, ALTERNATOR	1
8	0C29200234	BRACKET, ALTERNATOR	1
9	0C29200144	BELT, FAN	1
10	0C29200101	O-RING	1
11	0C29200275	BOLT	1
12	0C29200200	SENSOR, WATER THERMO (NOT USED)	1
13	0C29200233	ALTERNATOR	1
14	0C29200235	STARTER	1

**NOTE:** See Appendix on page 32 for listing and description of items shown with Alph-Numeric reference numbers.

**NOTE:** See pages 22 and 23 for alternator and starter nuts.

# 3.0L DIESEL ENGINE COMMON PARTS — NATURALLY ASPIRATED UNITS



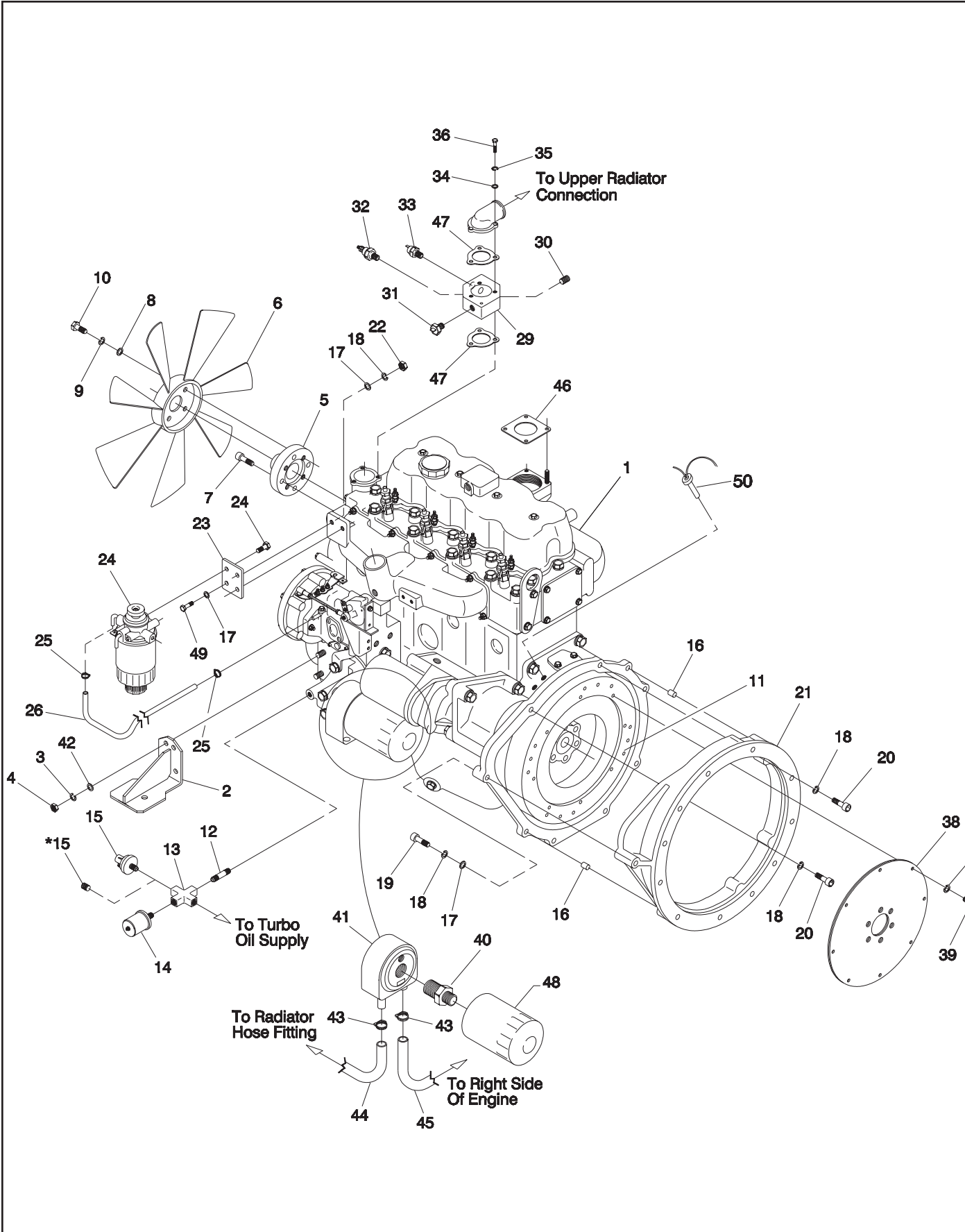
### 3.0L DIESEL ENGINE COMMON PARTS — NATURALLY ASPIRATED UNITS

ITEM	PART NUMBER	DESCRIPTION	QTY
1	0C2920	ENGINE, 3.0L KIA HA	1
2	0C2947	FOOT, ENGINE MOUNTING	2
3	022302	LOCK WASHER 7/16"	6
4	022315	HEX NUT 7/16"-20	6
5	0C3426	FAN SPACER, 3L HA	1
6	095262	FAN, COOLING 18" DIA.	1
7	0C6889	SHCS, 5/16"-24 X 1.25" LONG	4
8	022145	FLAT WASHER 5/16"-M8	4
9	022129	LOCK WASHER 5/16"-M8	4
10	039253	HHCS, M8-1.25 X 20 LONG	4
11	0C2917	FLYWHEEL, MACHINED 3L HA	1
12	035578	PIPE NIPPLE 1/8" NPT	1
13	035430	PIPE TEE 1/8" NPT	1
14	053666	SENDER, OIL PRESSURE	1
15	0A8584	SWITCH, OIL PRESSURE	1
	061012 *	PIPE PLUG, SOCKET HEAD 1/8" NPT	1
16	0C6902	ROLL PIN M12 X 30 LONG	2
17	022131	FLAT WASHER 3/8"-M10	9
18	022237	LOCK WASHER 3/8"-M10	19
19	060619	SHCS M10-1.5 X 40 LONG	5
20	0C2948	SHCS M10-1.25 X 50 LONG	2
21	0C2919	ADAPTER, FLYWHEEL 3L HA	1
22	022241	HEX NUT 3/8-16	4
23	0C3917	BRACKET, FUEL FILTER 3L HA	1
24	098110	FUEL FILTER/WATER SEPERATOR KIA	1
	098110S	REPLACEMENT CARTRIDGE FOR FUEL FILTER	1
25	035472	HOSE CLAMP #6	2
26	052221	HOSE 5/16' I.D.	12"
27	0C3427	AIR CLEANER 3L HA	1
28	039294	HOSE CLAMP #44	1
29	0C3759	ADAPTER, THERMOSTAT 3L HA	1
30	031919	PIPE PLUG, SOCKET HEAD 3/8" NPT	1
31	035606	SWITCH, COOLANT TEMPERATURE	1
32	053667	SENDER, COOLANT TEMPERATURE	1
33	057522	SWITCH, COOLANT LEVEL	1
34	022473	FLAT WASHER 1/4"-M6	3
35	022097	LOCK WASHER 1/4"-M6	3
36	051751	HHCS M6-1.0 X 50 LONG	3
37	097921	ADAPTER, EXHAUST	1
38	0A8240	FLEX PLATE	2
39	052647	SHCS M10-1.5 X 25 LONG	8
40	022250	FLAT WASHER 7/16"	6
41	097256	GASKET, EXHAUST MANIFOLD	1
42	0C6960	GASKET, THERMOSTAT	1
43	062963	HHCS, M10-1.25 X 30 LONG	2
44	046525	HEX NUT M10-1.25	2
45	082130D	MAGNETIC PICK UP ASSEMBLY 72"	1

NOTE:

\* E-OPTION CONTROL PANEL ONLY.

# 3.0L DIESEL ENGINE COMMON PARTS — TURBOCHARGED UNITS



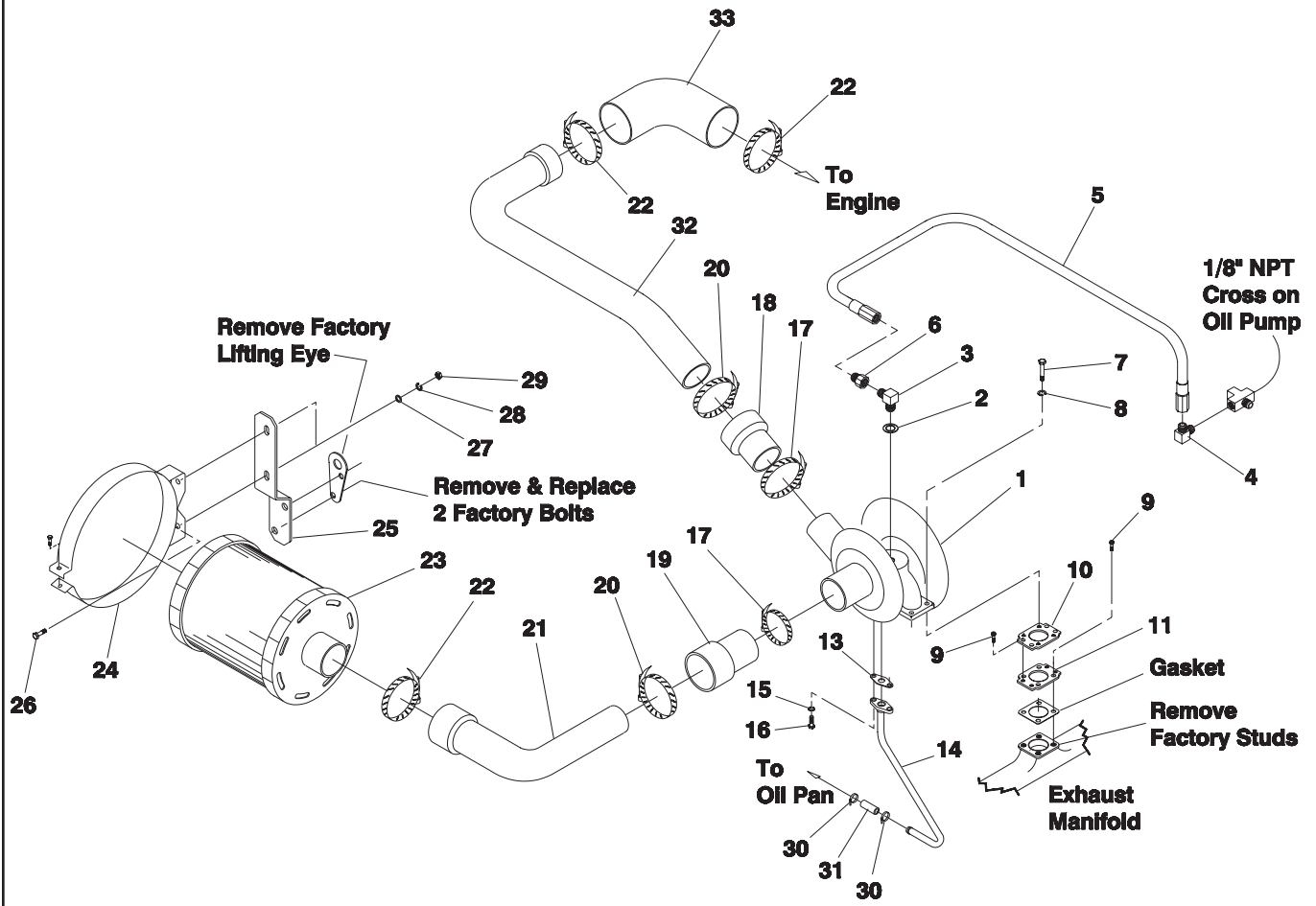
### 3.0L DIESEL ENGINE COMMON PARTS — TURBOCHARGED UNITS

ITEM	PART NUMBER	DESCRIPTION	QTY
1	0C2920	ENGINE, 3.0L KIA HA	1
2	0C2947	FOOT, ENGINE MOUNTING	2
3	022302	LOCK WASHER 7/16"	6
4	022315	HEX NUT 7/16"-20	6
5	0C3426	FAN SPACER, 3L HA	1
6	095262	FAN, COOLING 18" DIA.	1
7	0C6889	SHCS 5/16"-24 X 1.25" LONG	4
8	022145	FLAT WASHER 5/16"-M8	4
9	022129	LOCK WASHER 5/16"-M8	4
10	039253	HHCS M8-1.25 X 20 LONG	4
11	0C2917	FLYWHEEL, MACHINED 3L HA	1
12	035483	PIPE NIPPLE 1/8" NPT X 1-1/2" LONG	1
13	062158	PIPE CROSS 1/8" NPT FEMALE	1
14	053666	SENDER, OIL PRESSURE	1
15	0A8584	SWITCH, OIL PRESSURE	1
	061012 *	PIPE PLUG, SOCKET HEAD 1/8" NPT	1
16	0C6902	ROLL PIN M12 X 30 LONG	2
17	022131	FLAT WASHER 3/8"-M10	9
18	022237	LOCK WASHER 3/8"-M10	15
19	060619	SHCS M10-1.5 X 40 LONG	5
20	0C2948	SHCS M10-1.25 X 50 LONG	2
21	0C2919	ADAPTER, FLYWHEEL 3L HA	1
22	046525	HEX NUT M10-1.5	2
23	0C3917	BRACKET, FUEL FILTER 3L HA	1
24	098110	FUEL FILTER / WATER SEPERATOR KIA	1
	098110S	REPLACEMENT CARTRIDGE FOR FUEL FILTER	1
25	035472	HOSE CLAMP #6	2
26	052221	HOSE 5/16" I.D.	12"
29	0C3759	ADAPTER, THERMOSTAT 3L HA	1
30	031919	PIPE PLUG, SOCKET HEAD 3/8" NPT	1
31	035606	SWITCH, COOLANT TEMPERATURE	1
32	053667	SENDER, COOLANT TEMPERATURE	1
33	057522	SWITCH, COOLANT LEVEL	1
34	022473	FLAT WASHER 1/4"-M6	3
35	022097	LOCK WASHER 1/4"-M6	3
36	051751	HHCS M6-1.0 X 50 LONG	3
38	0A8240	FLEX PLATE	2
39	052647	SHCS M10-1.5 X 25 LONG	8
40	0C5489	CONNECTOR, OIL COOLER (M20 X 1.5)	1
41	096765	OIL COOLER, FILTER STYLE	1
42	022250	FLAT WASHER 7/16"	6
43	057822	HOSE CLAMP #8	4
44	065386	HOSE, SAE (100 RG.) 5/8" I.D. X 21" LONG	1
45	065386	HOSE, SAE (100 RG.) 5/8" I.D. X 38" LONG	1
46	097256	GASKET, EXHAUST MANIFOLD	1
47	0C6960	GASKET, THERMOSTAT	
48	096701	OIL FILTER	1
49	062963	HHCS M10-1.25 X 30 LONG	2
50	082130D	MAGNETIC PICK-UP ASSEMBLY 72"	1

NOTE:

\* E-OPTION CONTROL PANEL ONLY.

# 3.0L DIESEL AIR INTAKE FOR TURBOCHARGED UNITS



### 3.0L DIESEL AIR INTAKE FOR TURBOCHARGED UNITS

ITEM	PART NUMBER	DESCRIPTION	QTY
1	064075	TURBO CHARGER	1
2	064093	SEAL (COPPER WASHER)	1
3	064092	ADAPTER, 90 DEG. (M10 TO 1/8" NPT)	1
4	064094	ELBOW, 1/8" NPT X 1/2"-20 X 37 DEG.	1
5	064096B	OIL SUPPLY LINE	1
6	065375	ADAPTER, STRAIGHT (1/2"-20 TO 1/8" NPT)	1
7	039253	HHCS, M8-1.25 X 20MM LONG	4
8	022129	LOCK WASHER, 5/16"-M8	7
9	0C4351	SHCS, 3/8"-24 X 3/4" LONG	8
10	063508	ADAPTER, UPPER TURBOCHARGER	1
11	0C4159	ADAPTER, LOWER TURBOCHARGER	1
13	064417	GASKET, TURBOCHARGER	1
14	0C4347	OIL RETURN TUBE	1
15	022097	LOCK WASHER 1/4"-M6	2
16	047411	HHCS, M6-1.0 X 16MM LONG	2
17	035685	CLAMP, HOSE SIZE: #28	2
18	064085	REDUCER COUPLING, RED RUBBER 2" TO 1-3/4"	1
19	059999G	REDUCER COUPLING, RUBBER 2-1/8" X 1-11/16"	1
20	042561	CLAMP, HOSE SIZE: #36	2
21	073356	TUBE, AIR CLEANER	1
22	039294	CLAMP, HOSE SIZE: #44	3
23	0C3427	AIR CLEANER, ECC TYPE	1
24	073354	STRAP, AIR CLEANER MOUNTING	1
25	0C4195	BRACKET, AIR CLEANER	1
26	051756	HHCS, M10-1.5 X 20MM LONG	2
27	022131	FLAT WASHER, 5/8"-M10	2
28	046526	LOCK WASHER, 5/8"-M10	2
29	045772	HEX NUT, M10-1.5	2
30	057822	CLAMP, HOSE SIZE: #8	2
31	064948	REDUCER, RUBBER 5/8" TO 1/2"	1
32	0C4158	TUBE, AIR INTAKE	1
33	057759	ELBOW, RUBBER 2-1/2" I.D.	1

## APPENDIX: ALPHA-NUMERIC PARTS INDEX

REFERENCE	DESCRIPTION	PART NUMBER
K99082-2532	Stud	0969540351
K99082-3540	Stud	0C29200284
K99141-3500	Nut	0C29200285
K99142-2500	Nut	0969540366
K99201-2000	Washer, Spring	0969540391
K99201-2018	Bolt	0C29200286
K99201-2500	Washer, Spring	0969540348
K99201-3000	Washer, Spring	0969540350
K99201-3500	Washer, Spring	0969540388
K99203-2500	Washer	0C29200287
K99203-2516	Nut	0C29200288
K99204-2500	Washer, Plain	0C29200289
K99226-0420	Pin, Taper	0969540372
K99233-0616	Pin, Knock	0969540357
K99239-0316	Key, Woodruff	0969540381
K99282-1801	Clamp, Hose	0969540347
K99283-1600	Clamp	0C29200290
K99306-1000	Cap, Sealing	0969540374
K99306-2000	Cap, Sealing	0C29200291
K99306-2500	Cap, Sealing	0969540355
K99306-3000	Cap, Sealing	0969540354
K99306-3500	Cap, Sealing	0C29200292
K99306-4950	Cap, Sealing	0969540358
K99562-1000	Packing	0969540399
K99564-1400	Packing	0C29200293
K99574-3200	Ring, Retainer	0C29200294
K99576-1200	Ring, Retaining	0969540373
K99796-0610	Bolt, Flange	0C29200295
K99796-0814	Bolt, Flange	0C29200296
K99796-1235	Bolt	0969540369
K99796-1245	Bolt	0C29200297
K99800-10120	Bolt, Flange	0C29200298
K99801-1030	Bolt	0C29200299
K99811-1025	Bolt	0C29200300
K99906-0400	Nut	0C29200301
K99921-1000	Nut	0C29200302
K99940-1001	Nut, Flange	0969540400
K99951-1022	Washer, Plain	0C29200303
K99951-1030	Washer	0C29200304
K99952-0400	Washer	0C29200305
K99971-0400	Washer, Spring	0C29200306
K99971-1000	Washer, Spring	0C29200307

**NOTE: ALL QUANTITIES "AS REQUIRED"**



