

Repair Parts MANUAL

1.3 Liter

GAS/GASOLINE ENGINE

GENERAC

P. O. Box 8
PHONE: (414) 544-4811

Waukesha, WI 53187
FAX: (414) 544-4851

Table of Contents

Quick Reference Parts Guide	Page 1
Engine Torque Specifications.....	Page 1
Short Block and Gasket Sets	Page 2
Cylinder Block.....	Page 3
Fuel Pumps	Page 4
Oil Pan and Timing Chain Cover.....	Page 5
Crankshaft and Piston	Page 6
Distributor	Page 7
Valve System.....	Page 8, 9
Cylinder Head	Page 10, 11
Intake Manifold and Water Pump	Page 12, 13
Gasoline Carburetor.....	Page 14, 15
Natural Gas Carburetor	Page 16, 17
LP Gas Carburetor	Page 18, 19
Starter	Page 20
Engine DC Alternator	Page 21
Engine Common Parts.....	Page 22, 23
Engine Coolant Heater.....	Page 24

QUICK REFERENCE PARTS GUIDE/TORQUE SPECS

Tune-up Parts:

DESCRIPTION	PART NUMBER	QTY
Oil Filter	52241	1
Fuel Filter	29608	1
Air Filter	59402	1
V-Belt	39379	1
Spark Plug	52965	4
Distributor Cap	52471	1
Distributor Rotor	52473	1
Distributor Points	52475	1
Carbon Contact Assy.	52472	1

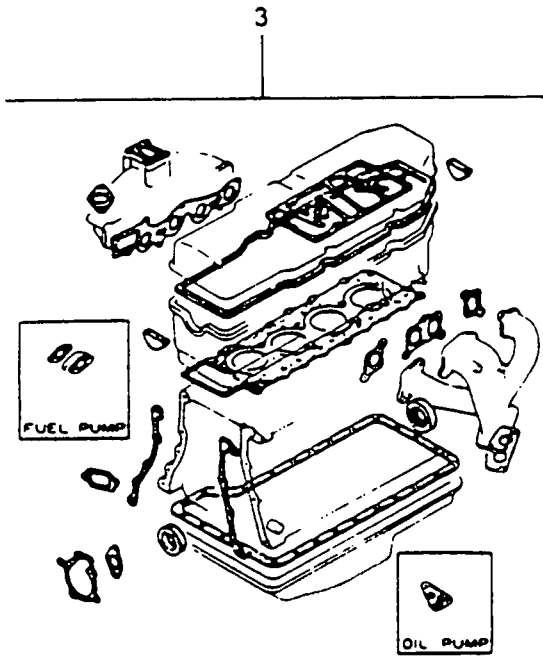
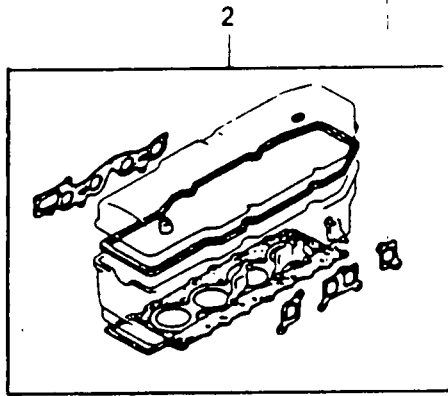
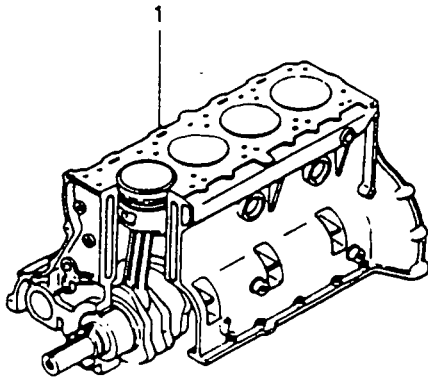
Engine Parts

DESCRIPTION	PART NUMBER	QTY
Piston (STD)	52955	4
Piston Ring Kit (STD)	52958	4
Main Bearing Set (STD)	52951	1
Rod Bearing Set (STD)	52953	4
Rear Main Seal	52440	1
Camshaft	52363	1
Timing Chain	52962	1
Engine Gasket Set	351-52300	1

Engine Torque Specifications

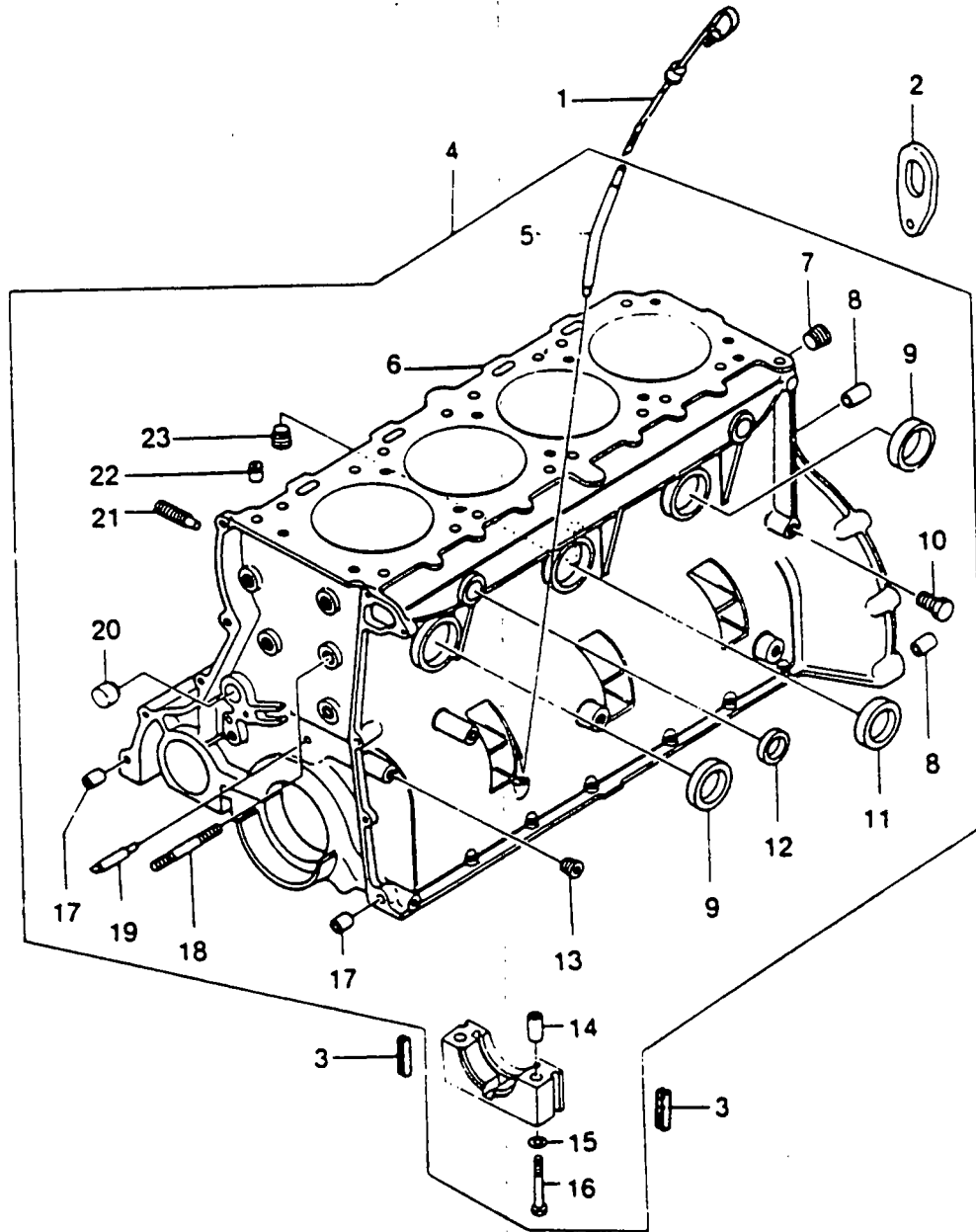
Main Bearing Caps	43-47 lb-ft (6.0-6.5 m-kg)
Connecting Rod Caps	29-33 lb-ft (4.0-4.5 m-kg)
Oil Pump Sprocket	22-25 lb-ft (3.0-3.5 m-kg)
Oil Pan	5-7 lb-ft (0.65-0.95 m-kg)
Cylinder Head (Cold)	47-51 lb-ft (6.5-7.0 m-kg)
Cylinder Head (Warm)	51-54 lb-ft (7.0-7.5 m-kg)
Distributor Drive Gear	51-58 lb-ft (7.0-8.0 m-kg)
Valve Rocker Arm Cover	1.8-2.5 lb-ft (0.25 m-kg)
Crankshaft Pulley	80-87 lb-ft (11-12 m-kg)
Intake Manifold	14-19 lb-ft (1.9-2.6 m-kg)
Exhaust Manifold	12-17 lb-ft (1.6-2.3 m-kg)
Spark Plugs	11-15 lb-ft (1.5-2.1 m-kg)
Oil Pressure Switch	9-13 lb-ft (1.2-1.8 m-kg)

SHORT BLOCK & GASKET SET



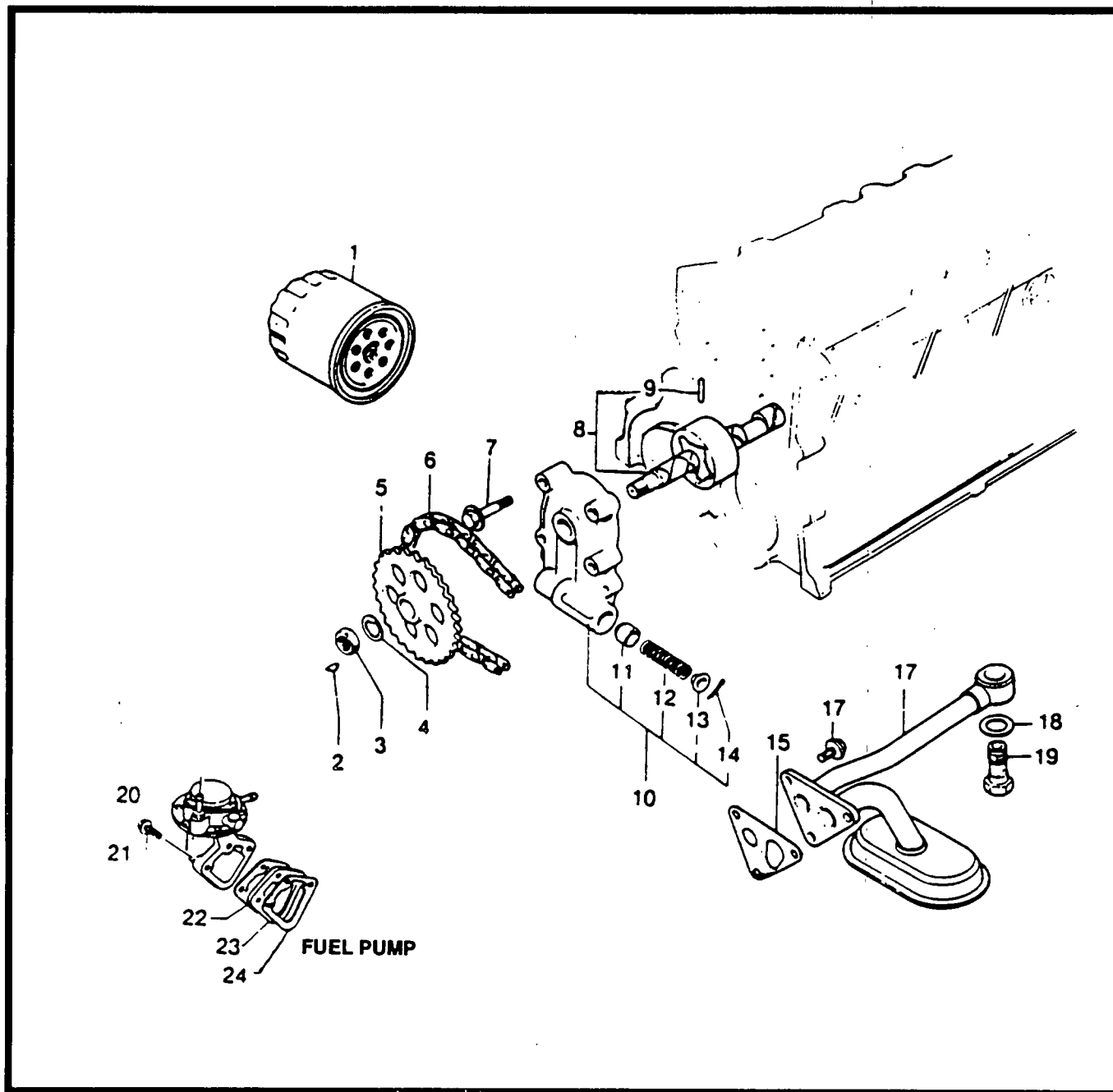
ITEM	PART NO.	QTY	DESCRIPTION
1	349-52300	1	Engine, Short Block
2	350-52300	1	Engine Sub-Gasket Set
3	351-52300	1	Engine Gasket Set

CYLINDER BLOCK



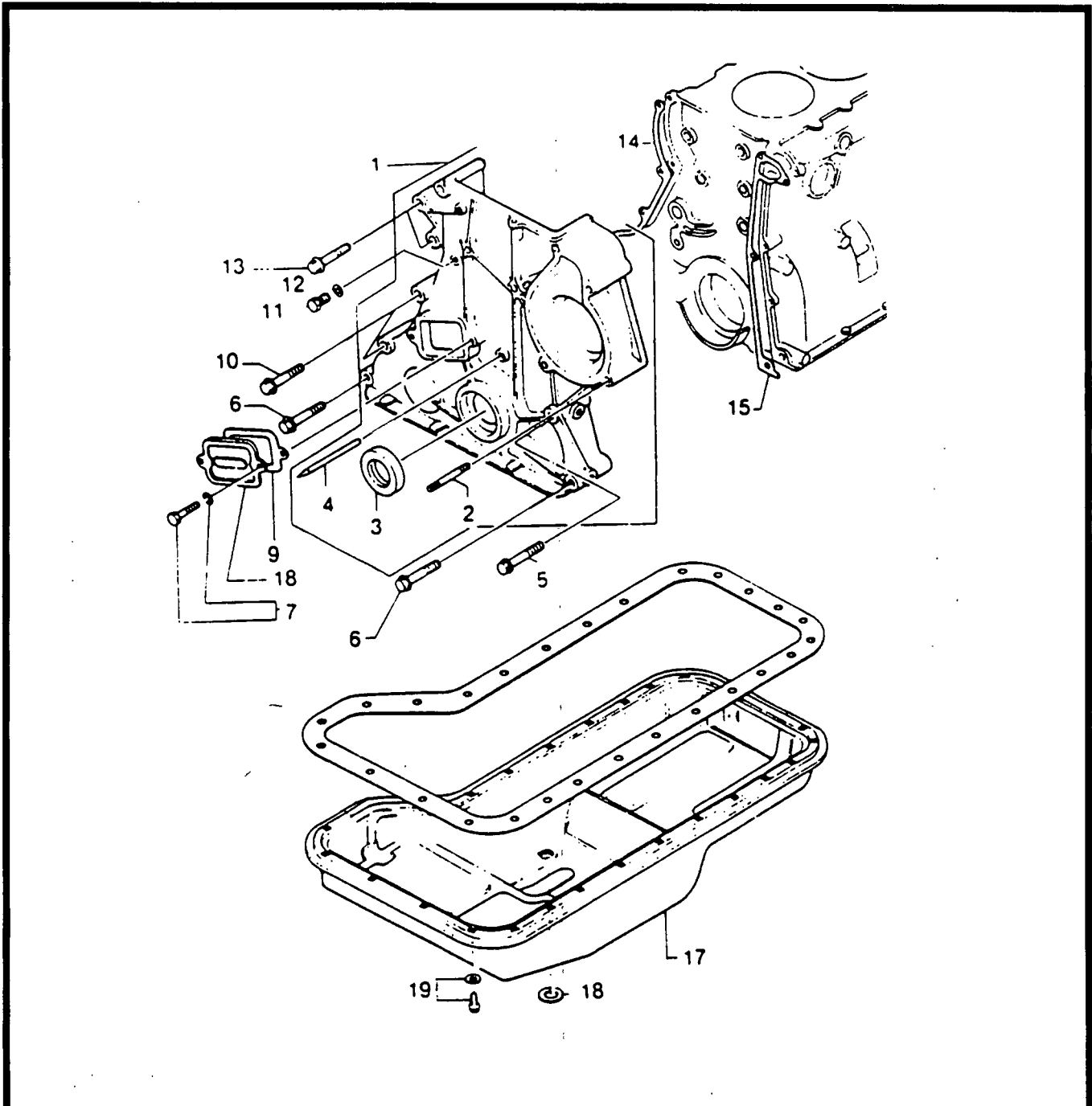
ITEM	PART NO.	QTY	DESCRIPTION	ITEM	PART NO.	QTY	DESCRIPTION
1	52402	1	Oil Level Gauge (Dipstick)	13	52412	1	Plug
2	52333	1	Engine Hanger	14	52413	10	Tubular Pin
3	52403	2	Main Bearing Side Seal	15	52414	10	Plain Washer
4	52328	1	Cylinder Block Assembly	16	52415	10	Main Bearing Cap Bolts
5	52405	1	Oil Level Gauge Tube	17	52416	3	Tubular Pin
6	52404	1	Cylinder Block	18	52417	1	Stud
7	52406	1	Hex Socket Plug	19	52418	1	Oil Jet
8	52407	2	Tubular Pin	20	52419	1	Blind Plug
9	52408	4	Blind Plug	21	52420	1	Joint
10	52409	1	Water Drain Cock	22	52421	1	Oil Control Plug
11	52410	1	Blind Plug	23	52422	1	Plug
12	52411	2	Blind Plug				

FUEL & OIL PUMPS



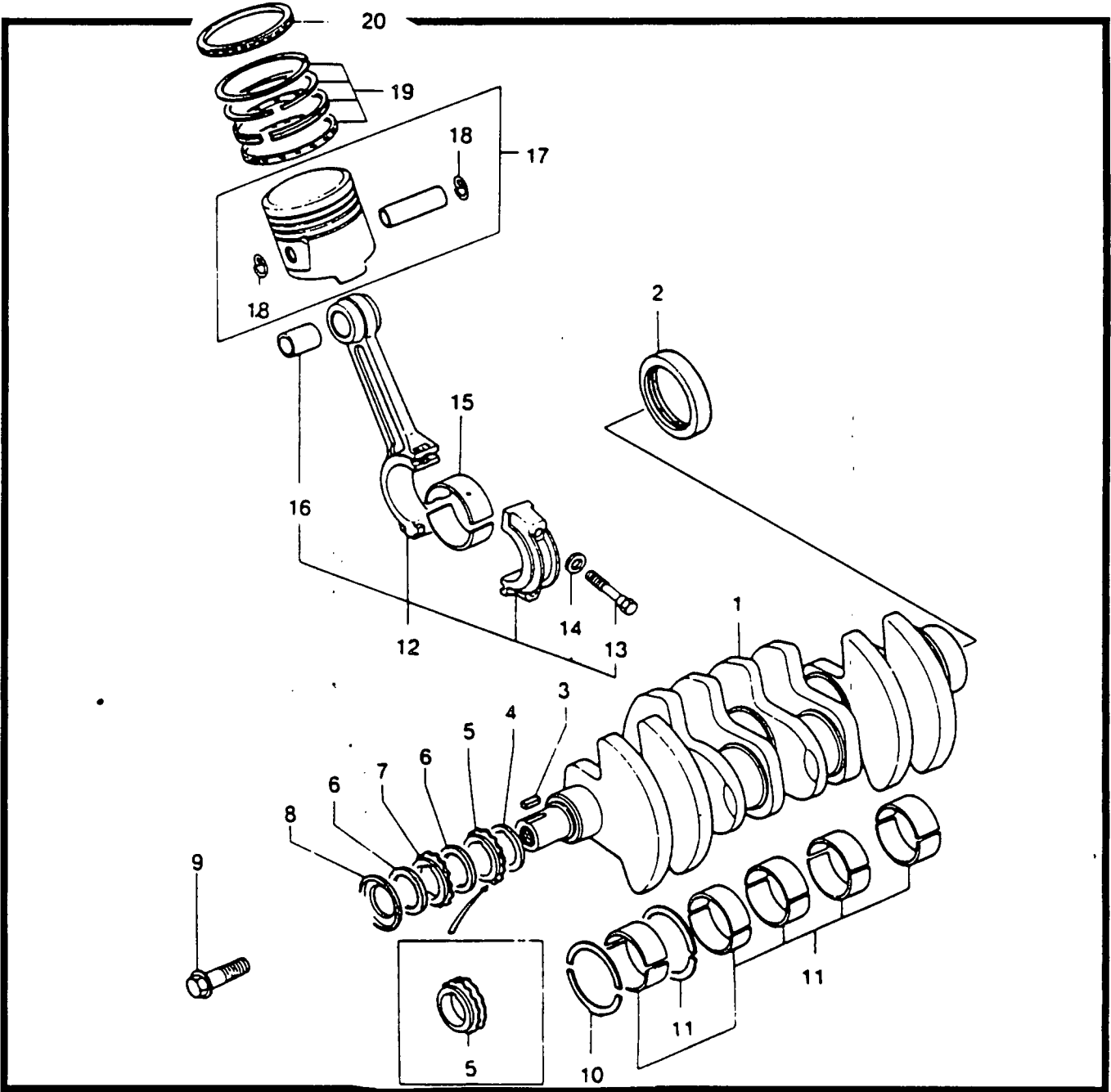
ITEM	PART NO.	QTY	DESCRIPTION	ITEM	PART NO.	QTY	DESCRIPTION
1	52241	1	Oil Filter	13	52900	1	Spring Seat
2	52489	1	Key	14	52901	1	Split Pin
3	52490	1	Nut	15	52902	1	Oil Pump Gasket
4	52491	1	Lockwasher	16	52903	3	Bolt
5	52492	1	Oil Pump Sprocket	17	52904	1	Oil Strainer Assembly
6	52493	1	Oil Pump Chain	18	52905	2	Packing
7	52494	4	Flanged Head Bolt	19	52906	1	Bolt Connector
8	52495	1	Oil Pump Shaft	20	52947	1	Fuel Pump
9	52496	1	Pin, Grooved Fastener	21	52948	2	Bolt
10	52497	1	Oil Pump Cover	22	52949	2	Fuel Pump Packing
11	52498	1	Pressure Control Plunger	23	52950	1	Insulator
12	303-52300	1	Pressure Control Spring				

OIL PAN & TIMING CHAIN COVER



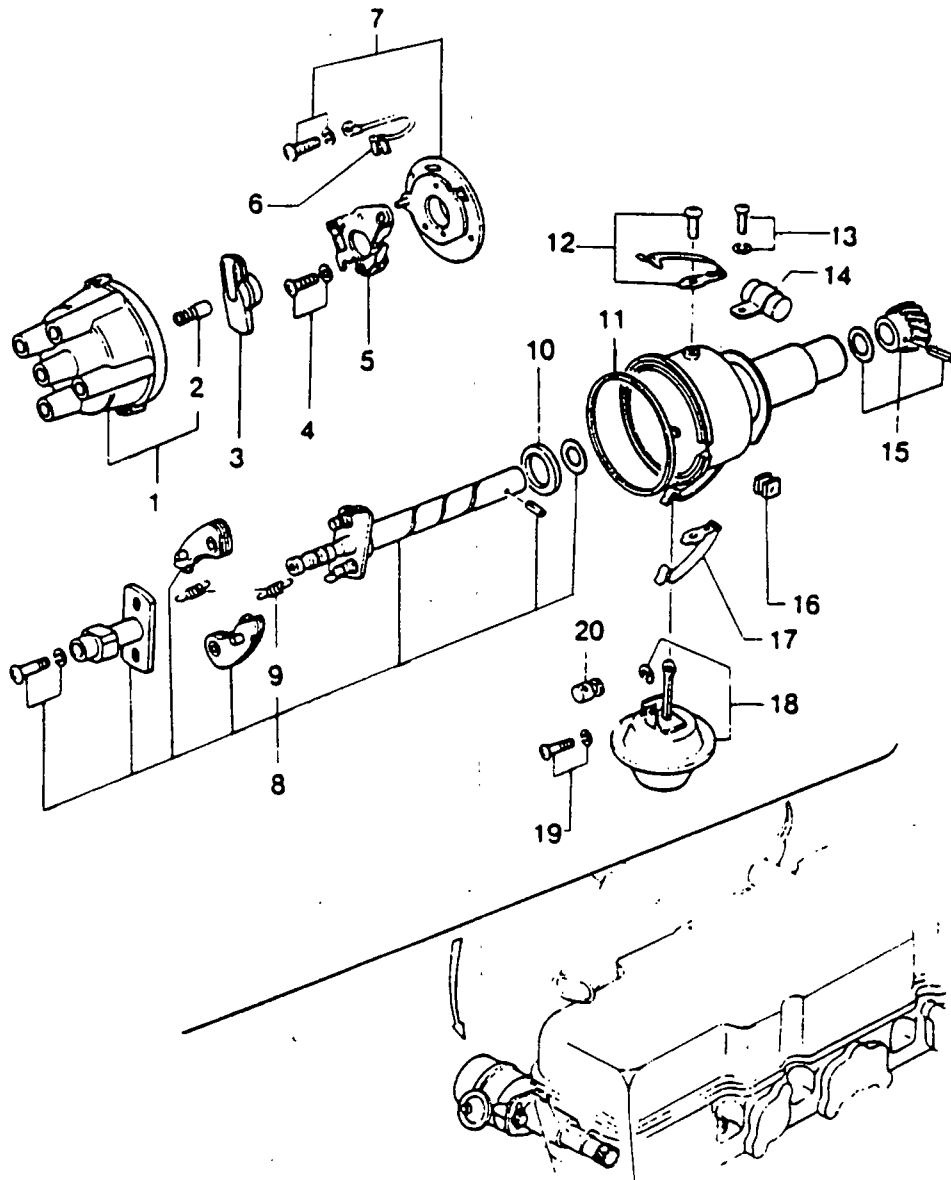
ITEM	PART NO.	QTY	DESCRIPTION	ITEM	PART NO.	QTY	DESCRIPTION
1	52424	1	Chain Case Assembly	11	52946	1	Plug
2	52425	1	Intake Manifold Stud	12	52945	1	Packing
3	52426	1	Oil Seal	13	52434	2	Bolt
4	52427	1	Indicator Pin	14	52435	1	Chain Case Gasket
5	52428	1	Bolt	15	52436	1	Chain Case Gasket
6	52429	2	Bolt	16	52943	1	Oil Pan Packing
7	52430	2	Bolt	17	52437	1	Oil Pan
8	52431	1	Chain Case Cover	18	51086	1	Gasket
9	52432	1	Cover Gasket	19	52438	26	Bolt
10	52433	2	Bolt				

CRANKSHAFT & PISTON



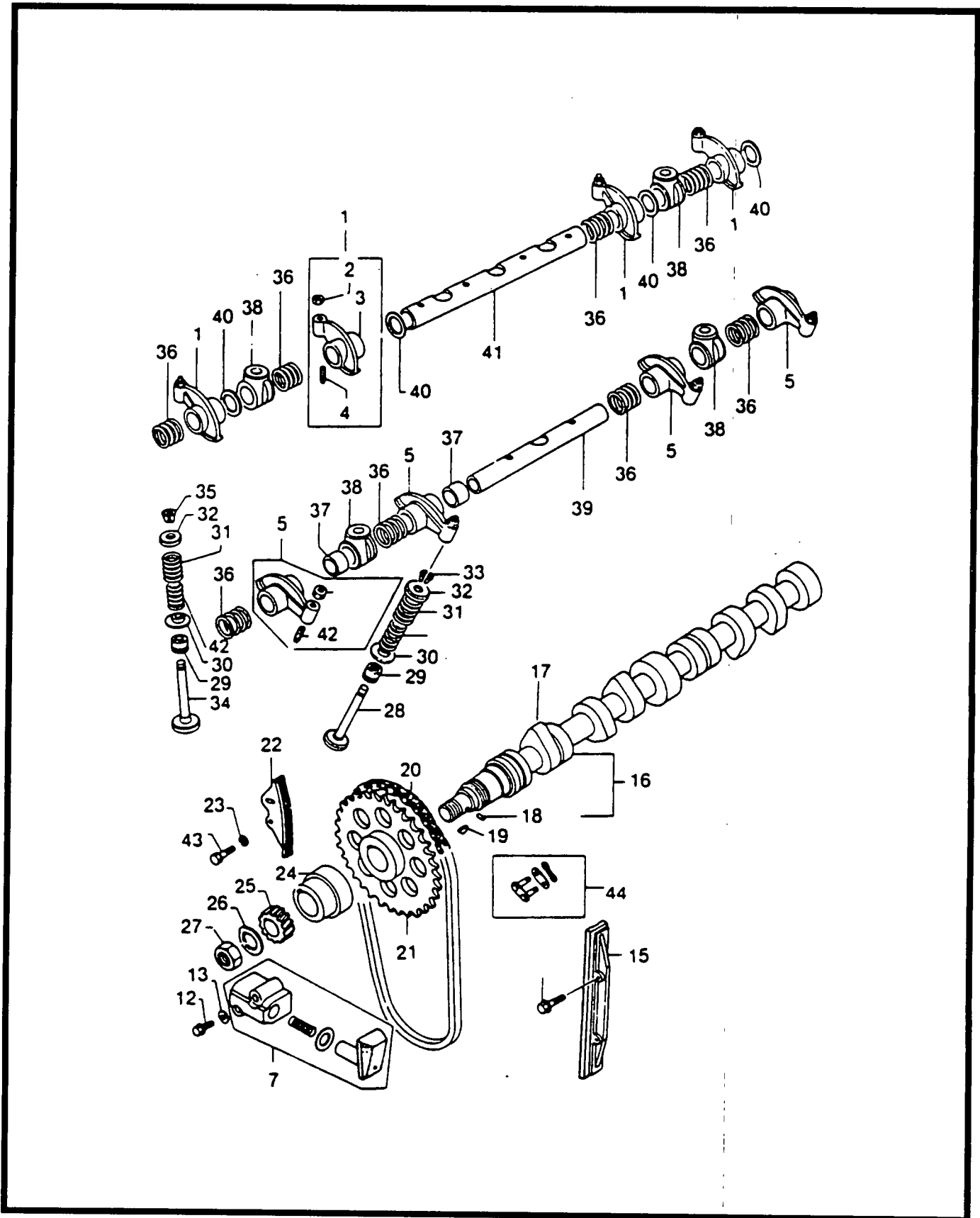
ITEM	PART NO.	QTY	DESCRIPTION	ITEM	PART NO.	QTY	DESCRIPTION
1	52439	1	Crankshaft	11	52951	1	Main Bearing Set
2	52440	1	Oil Seal	12	52447	4	Connecting Rod Assy.
3	52236	1	Woodruff Key	13	52448	8	Connecting Rod Bolt
4	52441	2	Crankshaft Spacer	14	52952	8	Lockwasher
5	52442	1	Crankshaft Sprocket	15	52953	4	Connecting Rod Bearing Set
6	52443	2	Rubber Ring	16	52954	4	Connecting Rod Bushing (Small End)
7	52444	1	Oil Pump Sprocket	17	52955	4	Piston Assembly
8	52445	1	Oil Deflector	18	52956	8	Piston Pin Retainer Clip
9	52236	1	Pulley Bolt	19	52958	4	Piston Ring Kit
10	52446	1	Thrust Set	20	Included with Item 19

DISTRIBUTOR



ITEM	PART NO.	QTY	DESCRIPTION	ITEM	PART NO.	QTY	DESCRIPTION
1	52471	1	Cap Assembly	11	52481	1	Distributor Cap Gasket
2	52472	1	Contact Carbon Assy.	12	52482	1	Clamp
3	52473	1	Rotor	13	52474	1	Screw Set
4	52474	1	Screw Set	14	52483	1	Condensor
5	52475	1	Points	15	52484	1	Driven Gear Set
6	52476	1	Wire	16	52485	1	Grommet
7	52477	1	Breaker Base Assy.	17	52486	1	Clamp
8	52478	1	Governor Set	18	52487	1	Vacuum Control Assy.
9	52479	1	Spring Set Governor	19	52474	1	Screw Set
10	52480	1	Oil Seal	20	52488	1	Ventilator

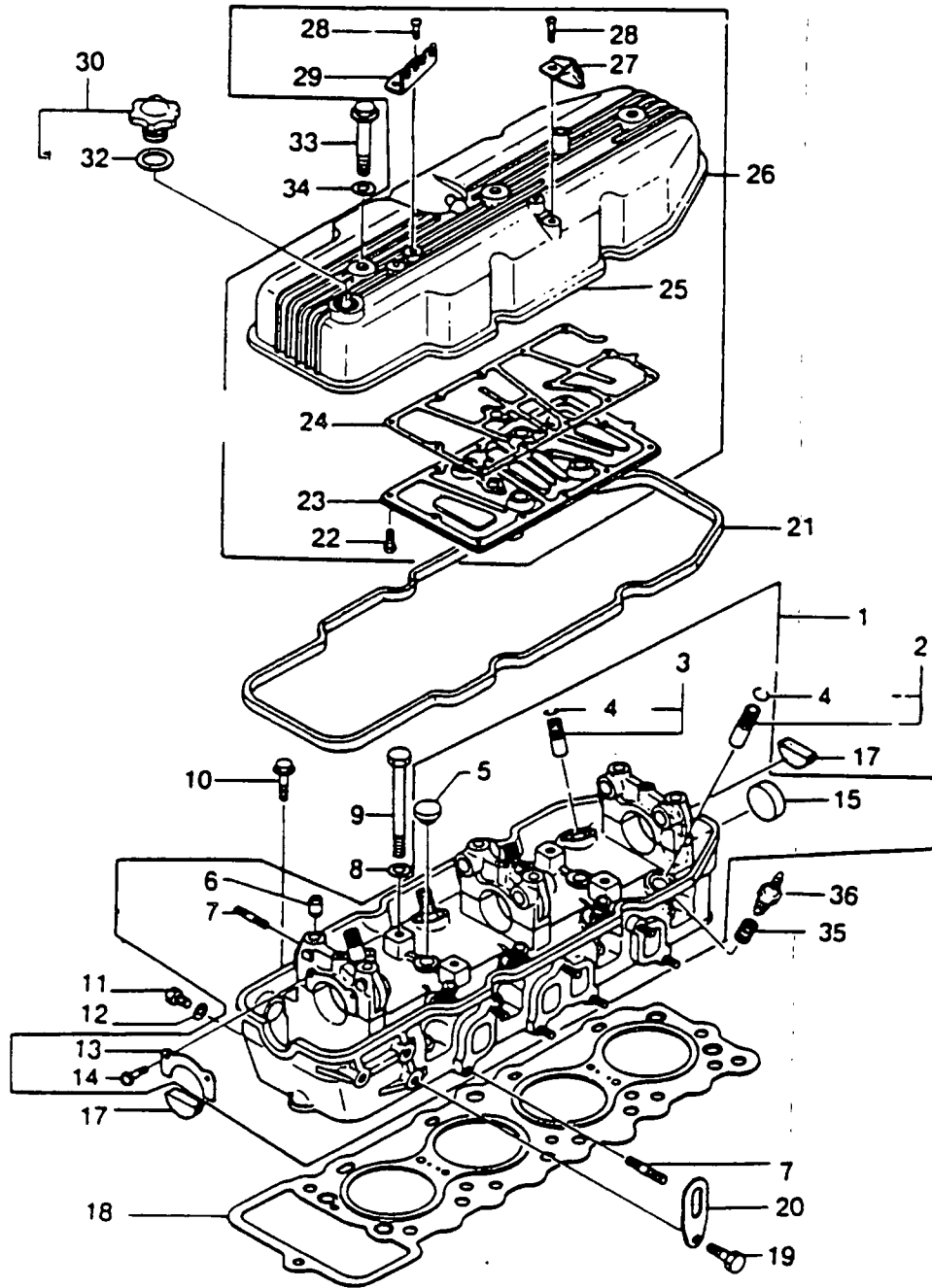
VALVE SYSTEM



VALVE SYSTEM

ITEM	PART NO.	QTY	DESCRIPTION	ITEM	PART NO.	QTY	DESCRIPTION
1	52325	4	Rocker Intake Arm	22	52368	1	Chain Guide Assembly
2	52348	8	Nut	23	52370	2	SP Washer
3	52347	4	Rocker Intake Arm	24	52371	2	Camshaft Spacer
4	52349	8	Tappet Adjusting Screw	25	52372	1	Distributor Drive Gear
5	52326	4	Rocker Exhaust Arm	26	52373	1	Tab Washer
6	52352	4	Rocker Exhaust Arm	27	52374	1	Nut
7	52327	1	Chain Adjuster	28	52375	4	Exhaust Valve
8	52353	1	Chain Adjuster Body	29	52376	8	Valve Seal
9	52354	1	Spring	30	52377	8	Valve Spring Lower Seat
10	52355	1	Damper	31	52378	8	Valve Outer Spring
11	52356	1	Shoe Assembly	32	52379	8	Valve Spring Upper Seat
12	52357	2	Flanged Head Bolt	33	52380	8	Exhaust Valve Cotter
13	52358	1	Plain Washer	34	52381	4	Intake Valve
14	52359	2	Bolt	35	52382	8	Intake Valve Cotter
15	52360	1	Chain Damper Assy.	36	52383	8	Rocker Arm Spring
16	52362	1	Camshaft Assy.	37	52384	2	Spacer
17	52363	1	Camshaft	38	52385	4	Shaft Support
18	52364	1	Dowel Pin	39	52386	1	Exhaust Rocker Shaft
19	52365	1	Woodruff Key	40	52387	4	Spacer
20	52962	1	Timing Chain	41	52388	1	Rocker Intake Shaft
21	52963	1	Camshaft Sprocket				

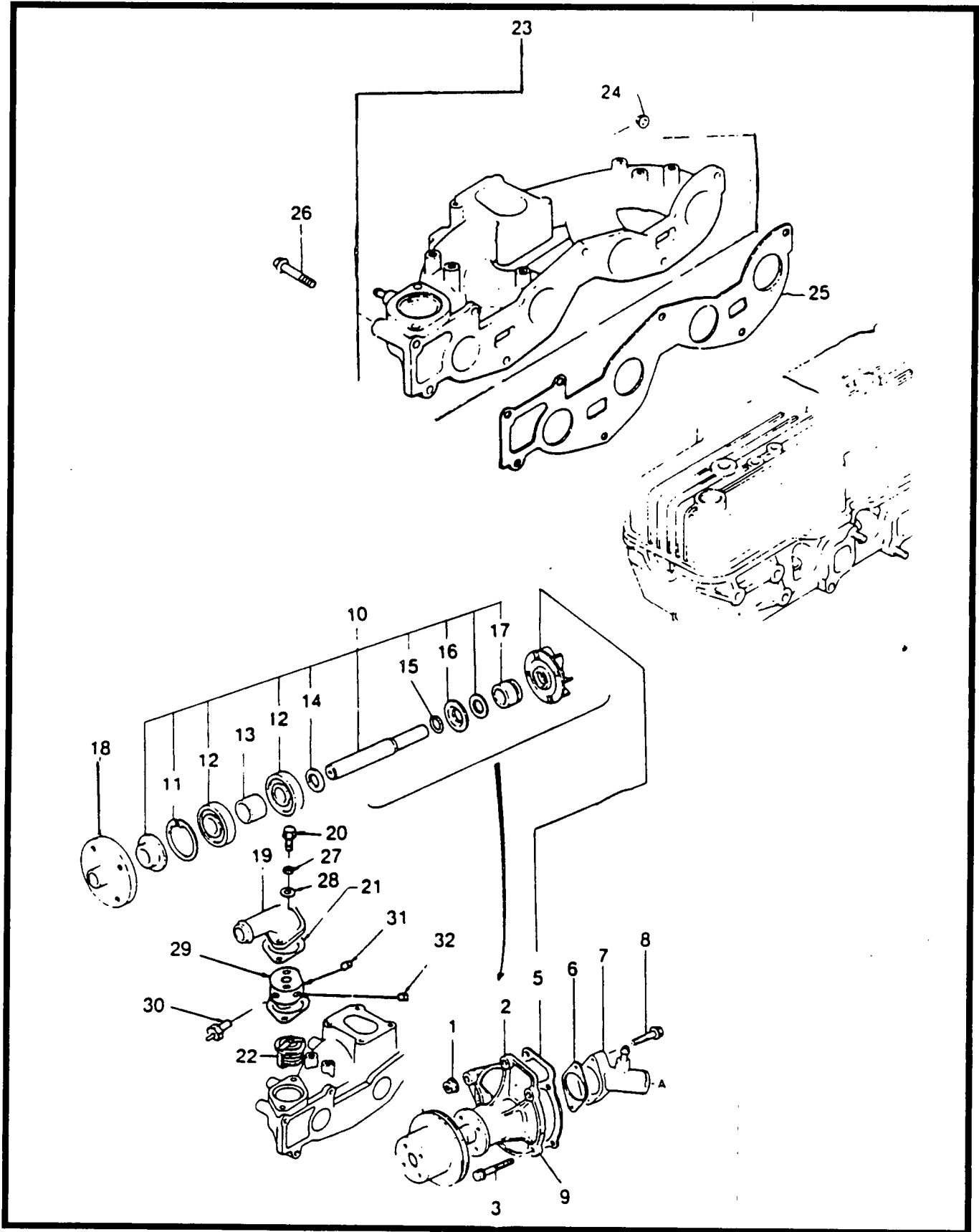
CYLINDER HEAD



CYLINDER HEAD

ITEM	PART NO.	QTY	DESCRIPTION	ITEM	PART NO.	QTY	DESCRIPTION
1	52301	1	Cylinder Head Assy.	18	52331	1	Cylinder Head Gasket
	52302	4	Exhaust Valve Guide	19	52332	2	Bolt
2	52303	4	Exhaust Valve Guide	20	52333	2	Engine Hanger
	52304	4	Intake Valve Guide	21	52334	1	Head Cover Gasket
3	52305	4	Intake Valve Guide	22	52335	15	Bolt
4	52306	8	Clip	23	52336	1	Oil Baffle Plate
5	52307	2	Blind Plug	24	52337	1	Oil Baffle Gasket
6	52308	6	Tubular Pin	25	52338	1	Cylinder Head Cover
7	52309	10	Stud	26	52324	1	Cylinder Head Cover Assy.
8	52310	10	Plain Washer	27	52339	1	H. T. Cord Protector
9	52311	10	Cylinder Head Bolt	28	52340	3	Tapping Screw
10	52312	1	Bolt	29	52341	1	H. T. Cord Protector
11	52313	1	Plug	30	52342	1	Oil Filler Cap Assy.
12	52314	1	Packing	31	52344	1	Oil Filler Cap
13	52315	1	Thrust Plate	32	52343	1	Oil Filler Gasket
14	52316	2	Set Screw	33	52345	3	Bolt
15	52317	1	Blind Plug	34	52346	3	Sealing Washer
16	52318	1	Cylinder Head				
17	52330	2	Oil Seal				

INTAKE MANIFOLD & WATER PUMP



INTAKE MANIFOLD & WATER PUMP

ITEM	PART NO.	QTY	DESCRIPTION	ITEM	PART NO.	QTY	DESCRIPTION
1	52907	1	Flanged Nut	17	52922	1	Water Seal
2	52908	1	Water Pump	18	52923	1	Water Pump Pulley Boss
3	52909	1	Bolt	19	52924	1	Coolant Outlet
4	52910	2	Bolt	20	51730	2	Capscrew- M8-1.25 x 60mm
5	52911	1	Water Pump Gasket	21	56958	2	Outlet Gasket
6	52912	1	Water Pump Inlet Gasket	22	52927	1	Thermostat
7	51796	1	Water Pump Inlet	23	51795	1	Intake Manifold
8	52914	2	Bolt	24	52940	3	Flanged Nut
9	52915	1	Water Pump Body	25	52941	1	Intake Gasket
10	52913	1	Water Pump Shaft	26	52942	1	Bolt
11	52916	1	Snap Ring	27	22129	2	Lockwasher - M8
12	52917	2	Ball Bearing	28	22145	2	Flatwasher- M8
13	52918	1	Bearing Spacer	29	56969	1	Thermostat Housing
14	52919	1	Washer	30	35606	1	Spacer
15	52920	1	Washer Ring	31	26073	1	Hi-Temp Shutoff Switch
16	52921	1	Dust Seal	32	26073_A	1	Pipe Plug - 1/8" NPT
							Pipe Plug - 1/4" NPT

GASOLINE CARBURETOR

ITEM	PART NO.	QTY	DESCRIPTION	ITEM	PART NO.	QTY	DESCRIPTION
1	53959	1	Carburetor	19	52216	1	Manifold Vacuum Fitting
2	30338	1	Gasket	20	36078	1	Hose- 5/32" ID x 23" long
3*	51027	1	Carburetor Adapter	21	49954	2	Ball Joint
4	52224	1	Gasket	22	22097	4	Lockwasher- 1/4"
5	23987	2	Socket Head Capscrew 1/4"-20 x 1-1/4"	23	36409	4	Hex Nut - 1/4"-28
6	45770	1	Capscrew- M5-0.80 x 10mm	24	52232	1	Stud- 1/4"-28 x 4-1/2"
7	49226	1	Lockwasher- M5	25	57470	1	Air Cleaner Support
8	50810	1	Bowden Cable Clamp	26	59445	1	Gasket
9	58971	1	Bowden Cable	27	59444	1	Air Cleaner Adapter
10	51789	1	Cable Mounting Bracket	28	61696	1	Barbed 90° Fitting 1/2" x 3/8" NPT
11	50923	2	Pan Head Screw No. 10-24 x 5/8"	29	59455	1	Ventilation Tube
12	22097	4	Lockwasher- M6	30	62522	1	Stud- 1/4"-20 x 3"
13	38750	4	Capscrew- M6-1.00 x 30mm	31	22127	1	Nut- 1/4"-20
14	32552	1	Barbed Fitting	32	22152	4	Lockwasher- No. 10
15	40173	6	Hose Clamp	33	36935	4	Pan Head Screw No. 10-32 x 3/4"
16	52221	1	Hose- 5/16" ID x 20"	34	59402	1	Filter Element
17	52221	1	Hose- 5/16" ID x 9"	35	59446	1	Air Cleaner Cover
18	53244	1	Fuel Filter	36	37561	1	Wing Nut- 1/4"-20

* Item 3 is obsolete.

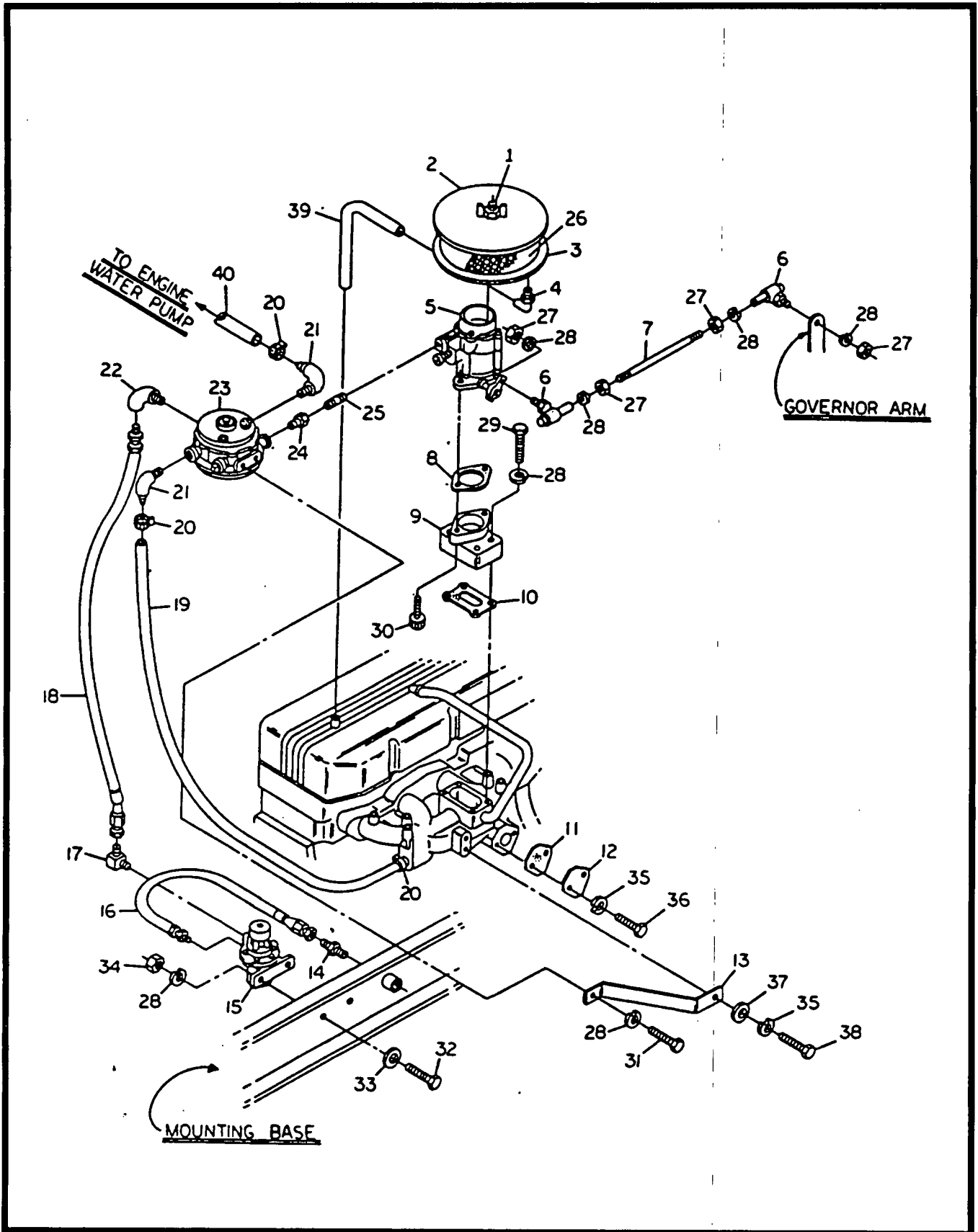
NATURAL GAS CARBURETOR

ITEM	PART NO.	QTY	DESCRIPTION	ITEM	PART NO.	QTY	DESCRIPTION
1	59447	1	Air Cleaner Stud	20	61909	1	Reducer Bushing 1" to 3/8"
2	59446	1	Air Cleaner Cover	21	43768-A	1	Solenoid
3	59402	1	Filter Element	22	59512	1	Fuel Pump Cover Plate Gasket
4	59444	1	Adapter	23	59193-A	1	Hose- 5/8" ID x 28"
5	61695	1	Barbed Fitting (Plastic) 3/8" NPT x 1/2" Barbed	24	61908	1	Regulator Support
6	59403	1	Carburetor	25	61910	4	Screw- No. 10-24 x 3/4"
7	42907	2	Capcrew M8-1.25 x 16mm	26	55944	1	Pressure Reducer Valve
8	22097	9	Lockwasher- 1/4"	27	26557	1	Reducer Bushing 1" to 3/4"
9	36409	4	Hex Nut- 1/4"-28	28	26915	1	Nipple- 3/4" NPT
10	62616	1	Stud- 1/4"-28 x 4.5"	29	59455	1	Ventilation Hose
11	38750	4	Capscrew M6-1.00 x 30mm	30	57822	2	Hose Clamp
12	59401	1	Carburetor Gasket	31	49954	2	Ball Joint
13	59017	1	Carburetor Adapter	32	22127	1	Hex Nut- 1/4"-20
14	52224	1	Carburetor Manifold Gasket	33	39253*	1	Capscrew M8-1.25 x 20mm
15	59450	2	Socket Head Capscrew 5/16"-18 x 1-1/4"	34	22129	3	Lockwasher- M8
16	59512	1	Fuel Pump Cover Plate Gasket	35	22145	1	Flatwasher- 5/16" (M8)
17	59511	1	Fuel Pump Cover Plate	36	25065	1	Pipe Nipple 3/8" NPT x 1-1/2" long
18	61907	1	Regulator Support Strap	37	31759**	2	Spacer
19	26983*	1	Capscrew 1/4"-20 x 3/4"				
	22203**	1	Capscrew 1/4"-20 x 1-1/4"				

* For units with LP gas LIQUID WITHDRAWAL only.

** For units with LP Gas VAPOR WITHDRAWAL only.

LP GAS CARBURETOR

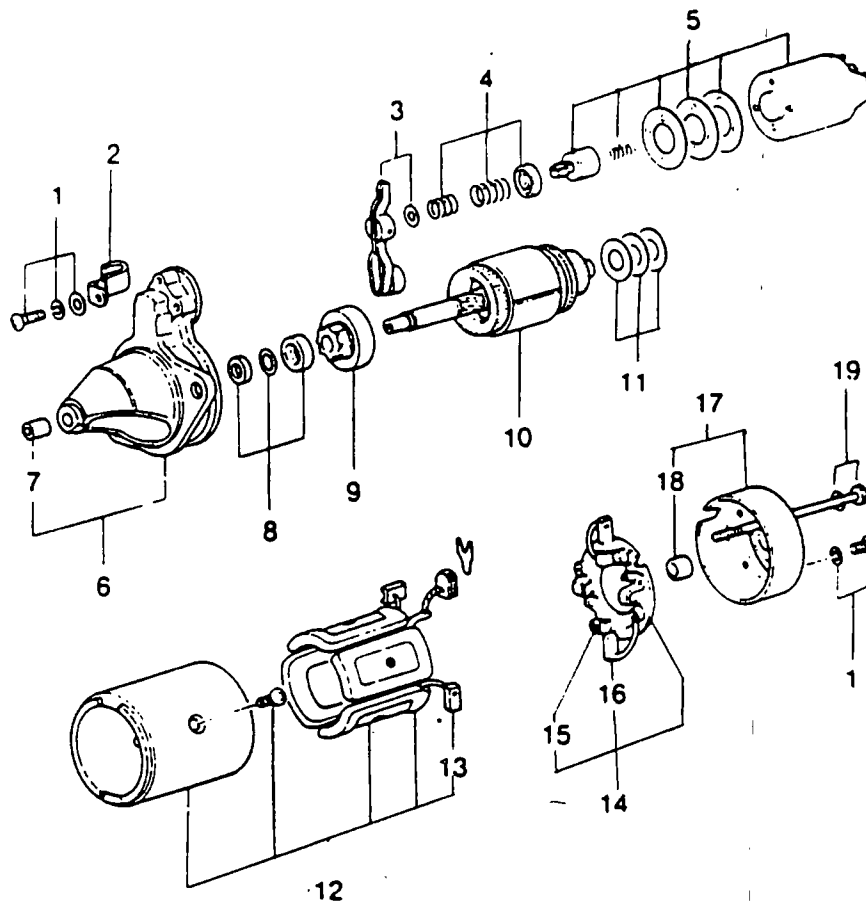


LP GAS CARBURETOR

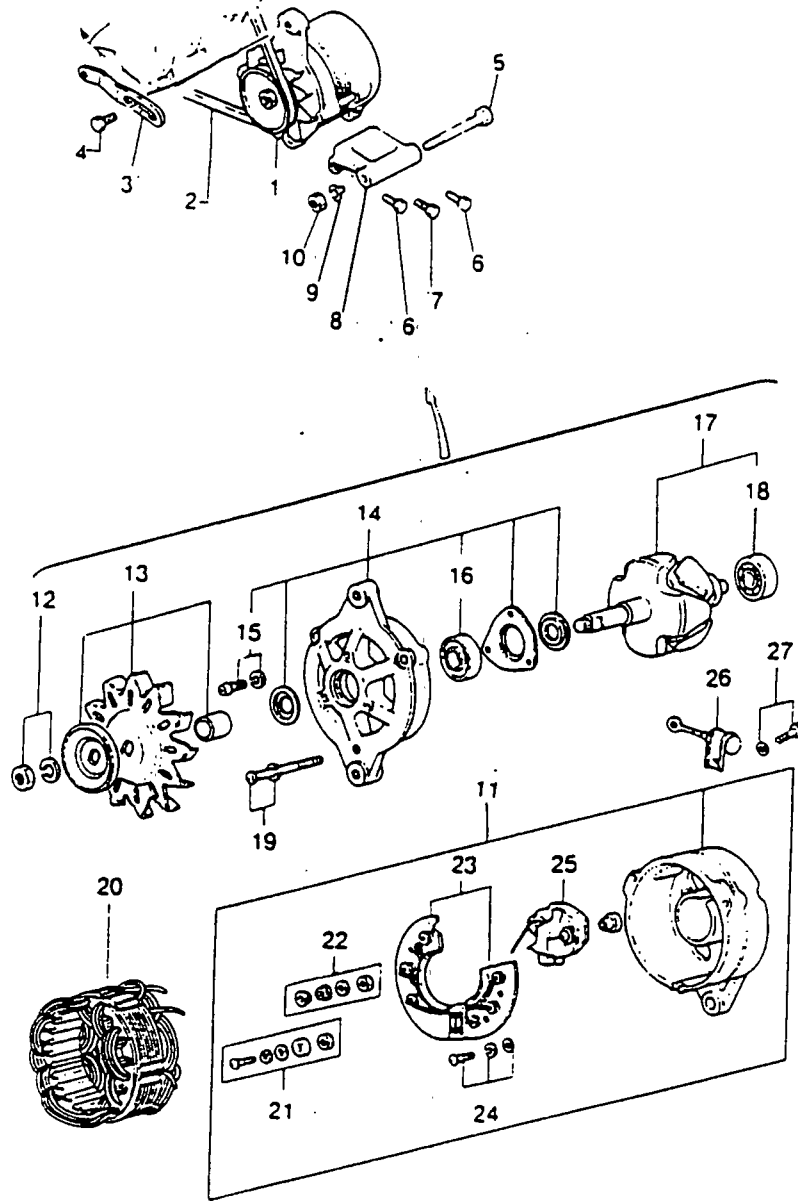
ITEM	PART NO.	QTY	DESCRIPTION	ITEM	PART NO.	QTY	DESCRIPTION
1	59447	1	Air Cleaner Stud	21	61696	2	Barbed 90° Fitting 1/2" x 3/8" NPT
2	59446	1	Air Cleaner Cover	22	46964	1	Brass Street Elbow 1/4" NPT
3	59444	1	Adapter	23	51358	1	LP Gas Regulator
4	61695	1	Barbed 90° Fitting	24	30418	1	Reducer Bushing 1/2" to 3/8" NPT
5	59403	1	Carburetor	25	25065	1	Nipple- 3/8" x 1.5" long
6	49954	2	Ball Joint	26	59402	1	Filter Element
7	62616	1	Stud- 1/4"-28 x 4.5"	27	36409	4	Hex Nut- 1/4"-28
8	59401	1	Carburetor Gasket	28	22097	11	Lockwasher- 1/4"
9	59017	1	Carburetor Adapter	29	38750	4	Capscrew M6-1.00 x 30mm
10	52224	1	Carburetor Manifold Gasket	30	59450	2	Socket Head Capscrew 5/16"-18 x 1-1/4"
11	59512	1	Fuel Pump Cover Plate Gasket	31	26983	1	Capscrew 1/4"-20 x 3/4"
12	59511	1	Fuel Pump Cover Plate	32	22413	2	Capscrew 1/4"-20 x 1"
13	61697	1	Regulator Support Strap	33	22473	2	Flatwasher- 1/4"
14	55472	1	Male Connector 1/4" x 1/4"	34	22127	2	Hex Nut- 1/4"-20
15	49198	1	Fuel Lockoff Solenoid	35	22129	3	Lockwasher- 5/16" (M8)
16	61903-B	1	LP gas Line- 17" long	36	42907	2	Capscrew- M8-1.25 x 16
17	49663	1	90° Brass Fitting 1/4" NPT	37	22145	1	Flatwasher- 5/16"
18	61903	1	LP gas Line	38	39253	1	Capscrew- M8-1.25 x 20
19	40107	1	Hose- 1/2" ID (SAE 20R3)	39	59455	1	ventilation Hose
20	35472	4	Hose Clamp	40	40107	40"	Hose- 5/8" ID (SAE 20R3)

STARTER

ITEM	PART NO.	QTY	DESCRIPTION	ITEM	PART NO.	QTY	DESCRIPTION
1	52450	2	Screw Set	11	52460	1	Washer Set
2	52451	1	Clip	12	52461	1	Yoke Assy.
3	52452	1	Lever Assy.	13	52462	2	Yoke Brush
4	52453	1	Spring Set	14	52463	1	Brush Holder
5	52454	1	Switch Assy.	15	52464	4	Brush Spring
6	52455	1	"F" Bracket Assy.	16	52465	2	Brush
7	52456	1	"F" Bearing Sleeve	17	52466	1	"R" Cover
8	52457	1	Pinion Stopper Set	18	52467	1	Sleeve Bearing
9	52458	1	Overrunning Clutch	19	52468	1	Bolt Set
10	52459	1	Armature				



ENGINE DC ALTERNATOR



ITEM	PART NO.	QTY	DESCRIPTION	ITEM	PART NO.	QTY	DESCRIPTION
1	52230	1	Alternator Pulley	13	52389	1	Pulley Assembly
2	43776	1	V-Belt	14	52390	1	Alternator Front Bracket
3	52928	1	Alternator Strap	15	52391	1	Screw Set
4	52929	1	Set Bolt	16	52392	1	Bearing
5	52930	1	Flanged Head Bolt	17	52393	1	Rotor Assembly
6	343-52300	3	Bolt	18	52392	1	Ball Bearing
7	52944	1	Bolt	19	52395	1	Screw Set
8	52932	1	Alternator Bracket	20	52396	1	Alternator Stator
9	52933	1	Shim	21	52397	1	Nut Set
	52300	1	Shim	22	52398	1	Molt
	52935	1	Shim	23	52399	1	Rectifier
10	52936	1	Flanged Nut	24	52400	1	Washer and Screw
11	52329	1	Rear Bracket	25	52401	1	Brush Holder Assembly
12	52239	1	Nut Set				

ENGINE COMMON PARTS

ITEM	PART NO.	QTY	DESCRIPTION	ITEM	PART NO.	QTY	DESCRIPTION
1	51782	1	1.3 Liter Gas Engine	38	57822	2	Hose Clamp
2	59743	1	Exhaust Manifold	39	57448	1	Hose- 5/8" ID x 7.5"
3	52228	1	Exhaust Manifold Gasket	40	44118	1	Barbed Straight Fitting 1/2" x 5/8"
4	52229	2	Exhaust Manifold Gasket	41	51730	2	Capscrew- M8-1.25 x 60mm
5	45771	7	Hex Nut- M8-1.25	42	52924	1	Thermostat Housing Cover
6	55934-D	1	Hose Clamp	43	56958	2	Thermostat Gasket
7	53674	1	Spacer	44	56959	1	Thermostat Housing Spacer
8	35586	2	Hose Clamp	45	53667	1	Coolant Temperature Sensor
9	61962	1	Radiator Hose 1-1/4" x 9-1/2" long	46	57522	1	Coolant Level Sensor
10	61660	1	Engine Mounting Leg	47	35606	1	High Coolant Temp. Switch
11	39379	1	V-Belt	48	51068	1	Radiator Hose 1-1/4" x 23" long
12	43776*	1	V-Belt	49	24114	2	Hex Nut- 5/16"-24
	39379**	1	V-Belt	50	57406	1	Dash Pot
13	61659*	1	Crankshaft Pulley	51	64988	1	Dash Pot Bracket
	62503**	1	Crankshaft Pulley	52	42911	2	Capscrew- M10-1.50 x 30mm
14	52236	1	Key	53	31919***	1	Pipe Plug- 3/8"
15	52237	1	Pulley Bolt	54	42574	1	Adapter
16	55321	1	Hose Plug	55	52233	1	Tee- 1/8" NPT
17	54370	3	Spacer	56	60108	1	Oil Pressure Switch
18	66041	2	Governor Support Bracket	57	53666-C	1	Oil Pressure Sender
19	66042**	1	Governor	58	52216	1	Manifold Vacuum Fitting
	66063*	1	Governor	59	36078	1	Hose- 5/32" ID x 23" long
20	61661	1	Engine Mounting Leg	60	53280	1	DC Alternator Pulley
21	52230	1	Pulley	61	35473	2	Hose Clamp
22	59053	1	Fan Spacer	62	42911	3	Capscrew- M10-1.50 x 30mm
23	57463	1	Fan (Plastic)	63	22145	4	Flatwasher- M10
24	48107	4	Capscrew- M6-1.00 x 25mm	65	62602-L*	1	Spring- Purple
25	40107	1	Hose- 1/2" ID x 36" long		62602-Z**	1	Spring- Blue
26	22097	4	Lockwasher- M6 (1/4")	69	49809	2	Flatwasher- M10
27	22473	4	Flatwasher- M6 (1/4")	70	57821	1	Capscrew- M8-1.25 x 40mm
28	22131	3	Flatwasher- M10 (3/8")	71	35058	2	Dash Pot Support Spacer
29	61906	3	Capscrew- M8-1.25 x 85mm	72	66061	1	Dash Pot Support
30	22129	6	Lockwasher- M8 (5/16")	****	66049	1	Wire- Coil to Distributor
31	52859	3	Flanged Lock Nut- M10-1.50				
32	59053	1	Fan Spacer				
33	52213	5	Capscrew- M10-1.25 x 40mm				
34	46526	9	Lockwasher- M10				
35	57772	1	Nylon Washer				
36	57765	1	Adapter				
37	34339	1	Barbed 90° Fitting 3/8" x 5/8"				

* 10 kW generator sets only.

** 20 kW generator sets only.

*** Item 53 is used on the Intake manifold when an engine coolant heater is NOT required.

**** These items are not shown in the exploded view.

ENGINE COOLANT HEATER

ITEM	PART NO.	QTY	DESCRIPTION	ITEM	PART NO.	QTY	DESCRIPTION
1	66034-A	1	Engine Coolant Heater 1000 Watt	8	43107	4	Capscrew- M8-1.25 x 25mm
2	66034-C	1	Engine Coolant Heater Thermostat	9	22145	4	Flatwasher- M8
3	66361	1	Engine Heater Bracket	10	22129	2	Lockwasher- M8
4	57822	6	Hose Clamp	11	45771	4	Hex Nut- M8-1.25
5	50967	1	Hose- 5/8" ID x 12"	12	27959	1	Wire Nut- Yellow
6	50967	1	Hose- 5/8" ID x 19"	13	44117	1	Barbed Straight Fitting
7	50967	1	Hose- 5/8" ID x 3-1/2"	14	34339	1	Barbed 90° Fitting
				15	62303	1	Adapter- 3/8" to 1/4" NPT

