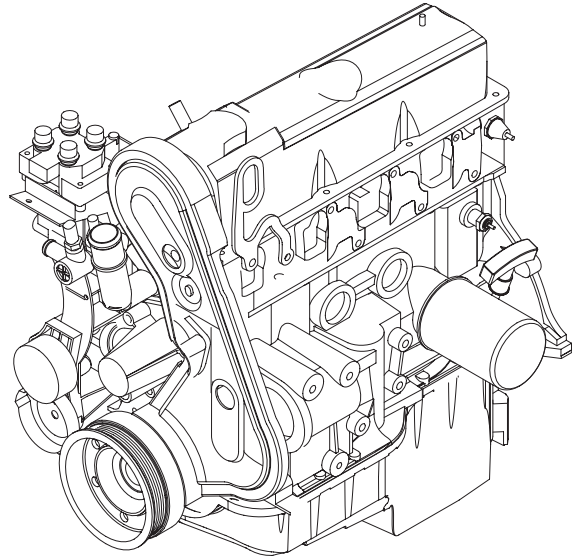


0F0136

GENERAC[®]
POWER SYSTEMS, INC.



2.5 LITER

G A S

FORD
ENGINE
PARTS
MANUAL

2.5L GAS ENGINE TABLE OF CONTENTS

| | |
|---|----|
| QUICK REFERENCE GUIDE | 2 |
| SERVICE RECOMMENDATIONS | 3 |
| CYLINDER BLOCK & RELATED PARTS | 8 |
| TIMING BELT COVERS | 10 |
| CYLINDER HEAD | 12 |
| PISTON ASSEMBLY | 13 |
| CAMSHAFT & TIMING BELT | 14 |
| CRANKSHAFT & BEARINGS | 16 |
| VALVE ASSEMBLIES & ROCKER ARM COVER | 18 |
| OIL PUMP & OIL PAN | 20 |
| WATER PUMP & THERMOSTAT | 22 |
| IGNITION SYSTEM | 23 |
| GASKET KIT LOWER | 24 |
| ENGINE COMMON PARTS | 26 |
| NATURAL GAS FUEL | 28 |

LEGEND

“AR” AS REQUIRED
“STD” STANDARD SIZE
“O.S.” OVERSIZE
“U.S.” UNDERSIZE
“NA” NOT AVAILABLE

NOTICE!

THE INFORMATION IN THIS MANUAL IS KNOWN TO BE ACCURATE AS OF THE DATE OF RELEASE SHOWN ON THE COVER. HOWEVER, ENGINEERING CHANGES CAN OCCUR WITHOUT NOTICE. TO OBTAIN THE PROPER PARTS, PLEASE BE SURE TO USE THE MODEL NUMBER OF THE UNIT BEING SERVICED WHEN ORDERING FROM THIS MANUAL.

2.5L GAS ENGINE QUICK REFERENCE GUIDE

QUICK REFERENCE ENGINE PARTS

| | | | | | |
|--|--------------------|--------------------------------------|---------------------------|-------------------|--|
| ENGINE SIZE: 2.5 Liter | FUEL: Gas | MAKE: Ford | ENGINE P/N: 0E9618 | MODEL: — | |
| OIL CAPACITY: 4.5 quarts (w/filter) | | COOLANT CAPACITY: 2.0 gallons | | User Notes | |
| SCHEDULED MAINTENANCE KITS | | | | | |
| Description | | | Part Number | | |
| Oil/Air | | | 0E961800PM | | |
| COMMON REFERENCE PARTS | | | | | |
| Description | Part Number | Special Notes | | | |
| Oil Filter (Main) | 0E96180102 | | | | |
| Oil Filter (Bypass) | | | | | |
| Fuel Filter | | | | | |
| Air Filter | 059402 | | | | |
| V-Belt | 0D3488B | Serpentine | | | |
| Thermostat | 0E96180237 | | | | |
| Thermostat Gasket | 0E96180231 | | | | |
| Water Pump | 0E96180232 | | | | |
| Water Pump Gasket | 0E96180234 | | | | |
| Starter Motor | 0E9747 | | | | |
| Spark Plug | 0E96180241 | | | | |
| ADDITIONAL REFERENCE PARTS | | | | | |
| Spark Plug Wire | 0E96180240 | Set w/Bracket | | | |
| Carburetor | 0E1028 | | | | |
| Carburetor Gasket | 059401 | | | | |
| Alternator | 0E9868 | | | | |
| Oil Pressure Switch | 0A8584 | | | | |
| Water Sensor | 0E0561 | | | | |
| Switch, Temperature | 0A6751 | | | | |
| Dipstick and Tube | 0E9738 | | | | |
| Parts Manual | 0E0136 | | | | |

2.5L GAS ENGINE SERVICE RECOMMENDATIONS

◆ ENGINE OIL RECOMMENDATIONS

The unit has been filled with “break in” engine oil at the factory. Use a high-quality detergent oil classified “For Service CC, SD, SE or SF.” Detergent oils keep the engine cleaner and reduce carbon deposits. Use oil having the following SAE viscosity rating, based on the ambient temperature range anticipated before the next oil change:

Engine Lubrication System:

Crankcase Oil Capacity4.3 L (4.5 U.S. qts.)

| Temperature | Oil Grade (Recommended) |
|-----------------------------|-------------------------|
| Above 80° F (27° C) | SAE 30W or 15W-40 |
| 30° to 80° F (-1° to 27° C) | SAE 20W-20 or 15W-40 |
| Below 32° F (0° C) | SAE 10W or 15W-40 |

◆ COOLANT

Use a mixture of half low silicate, ethylene glycol base antifreeze and half soft water. Use only soft water and only low silicate antifreeze. If desired, you may add a high quality rust inhibitor to the recommended coolant mixture. When adding coolant, always add the recommended 50-50 mixture.

Cooling System:

CCoolant Capacity
System.....7.6 L (2.0 U.S. gals.)

—▲ DANGER ▲—

- ▲ Do not remove the radiator pressure cap while the engine is hot or serious burns from boiling liquid or steam could result.
- ▲ Ethylene glycol base antifreeze is poisonous. Do not use your mouth to siphon coolant from the radiator, recovery bottle or any container. Wash your hands thoroughly after handling. Never store used antifreeze in an open container because animals are attracted to the smell and taste of antifreeze even though it is poisonous to them.

—▲ CAUTION ▲—

- ▲ Do not use any chromate base rust inhibitor with ethylene glycol base antifreeze, or chromium hydroxide (“green slime”) will form and cause overheating. Engines that have been operated with a chromate base rust inhibitor must be chemically cleaned before adding ethylene glycol base antifreeze. Using any high silicate antifreeze boosters or additives also will cause overheating. We also recommend that you DO NOT use any soluble oil inhibitor for this equipment.

2.5L GAS ENGINE SERVICE RECOMMENDATIONS

35 KW - 200 KW STANDBY GAS ENGINE DRIVEN GENERATOR SETS

Following is a recommended maintenance schedule for Generac standby gas engine driven generator sets from 35 kW to 200 kW in size. The established intervals in the schedule are the *maximum* recommended when the unit is used in an average service application. They will need to be decreased (performed more frequently) if the unit is used in a severe application. Use the unit hour meter or calendar time, whichever occurs first, from the previous maintenance interval to determine the next required maintenance interval.

Service Maintenance Interval Information:

The various service maintenance intervals are designated by interval numbers as follows:

- 1 An early inspection of the generator set to insure it is ready to operate when required and to identify any potential problem areas.

Performed monthly or following each 10 hours of operation of the unit and requires approximately .5 man-hours per unit to complete.

This inspection may be performed by the end user providing the following safety steps are taken to prevent the engine from starting automatically without warning:

To prevent injury, perform the following steps in the order indicated before starting any maintenance:

- **Disable the generator set from starting and/or connecting to the load by setting the control panel Auto-Off-Manual switch to the "OFF" position.**
- **Remove the control panel fuse.**
- **Turn off the battery charger.**
- **Remove the negative battery cable.**

The battery charger must be turned off BEFORE removing the battery cable to prevent an over current condition from burning out sensitive control panel components and circuits.

Following all maintenance, reverse these steps to insure the unit is returned to standby setup for normal operation when required.

- 2 A break-in service inspection of the generator set to insure it is ready to operate and carry the load when required, and to identify any potential problem areas.

*Performed **ONLY ONCE** following the first three months or the first 30 hours of operation after purchase of the unit and requires approximately 2.5 man-hours per unit to complete.*

This inspection contains some maintenance tasks which require special tools, equipment, and/or knowledge to accomplish and should be performed only by an authorized Generac Service Dealer.

- 3 An operational inspection of the generator set to insure it is ready to operate and carry the load when required, and to identify any potential problem areas.

Performed semi-annually or following each 50 hours of operation of the unit and requires approximately 1.5 man-hours per unit to complete.

This inspection contains some maintenance tasks which require special tools, equipment, and/or knowledge to accomplish and should be performed only by an authorized Generac Service Dealer.

- 4 A mid-level inspection of the generator set to insure it is ready to operate and carry the load when required, and to identify any potential problem areas.

Performed annually or following each 100 hours of operation of the unit and requires approximately 5.0 man-hours per unit to complete.

This inspection contains some maintenance tasks which require special tools, equipment, and/or knowledge to accomplish and should be performed only by an authorized Generac Service Dealer.

NOTE: Add 20% to all times for 8 cylinder or larger engines.

2.5L GAS ENGINE SERVICE RECOMMENDATIONS

GENERAC POWER SYSTEMS, INC.

RECOMMENDED SCHEDULED MAINTENANCE PROGRAM
SERVICE WORK TO BE PERFORMED BY FACTORY-TRAINED PERSONNEL ONLY.

DEALER INFORMATION

NAME: _____
ACCOUNT #: _____
ADDRESS: _____

PHONE: _____
TECHNICIAN: _____
SIGNATURE: _____

OWNER INFORMATION

NAME: _____
ADDRESS: _____

SITE: _____
PHONE: _____
SIGNATURE: _____

PURCHASE DATE: _____ START-UP DATE: _____

APPLICATION: ___ Standby Power ___ Prime Power ___ Rental/Trailerized

GENERATOR & TRANSFER SWITCH INFORMATION

GENERATOR

MODEL NUMBER: _____
SERIAL NUMBER: _____

TRANSFER SWITCH

MODEL NUMBER: _____
SERIAL NUMBER: _____

HOUR METER READING *at Completion of the Inspection*: _____

▲ WARNING! ▲

To prevent injury, perform the following steps in the order indicated before starting any maintenance:

- Disable the generator set from starting and/or connecting to the load by setting the control panel Auto-Off-Manual switch to the "OFF" position.
- Remove the control panel fuse.
- Turn off the battery charger.
- Remove the negative battery cable.

NOTE:

The battery charger must be turned off BEFORE removing the battery cable to prevent an over current condition from burning out sensitive control panel components and circuits.

Following all maintenance, reverse these steps to insure the unit is returned to standby setup for normal operation when required.

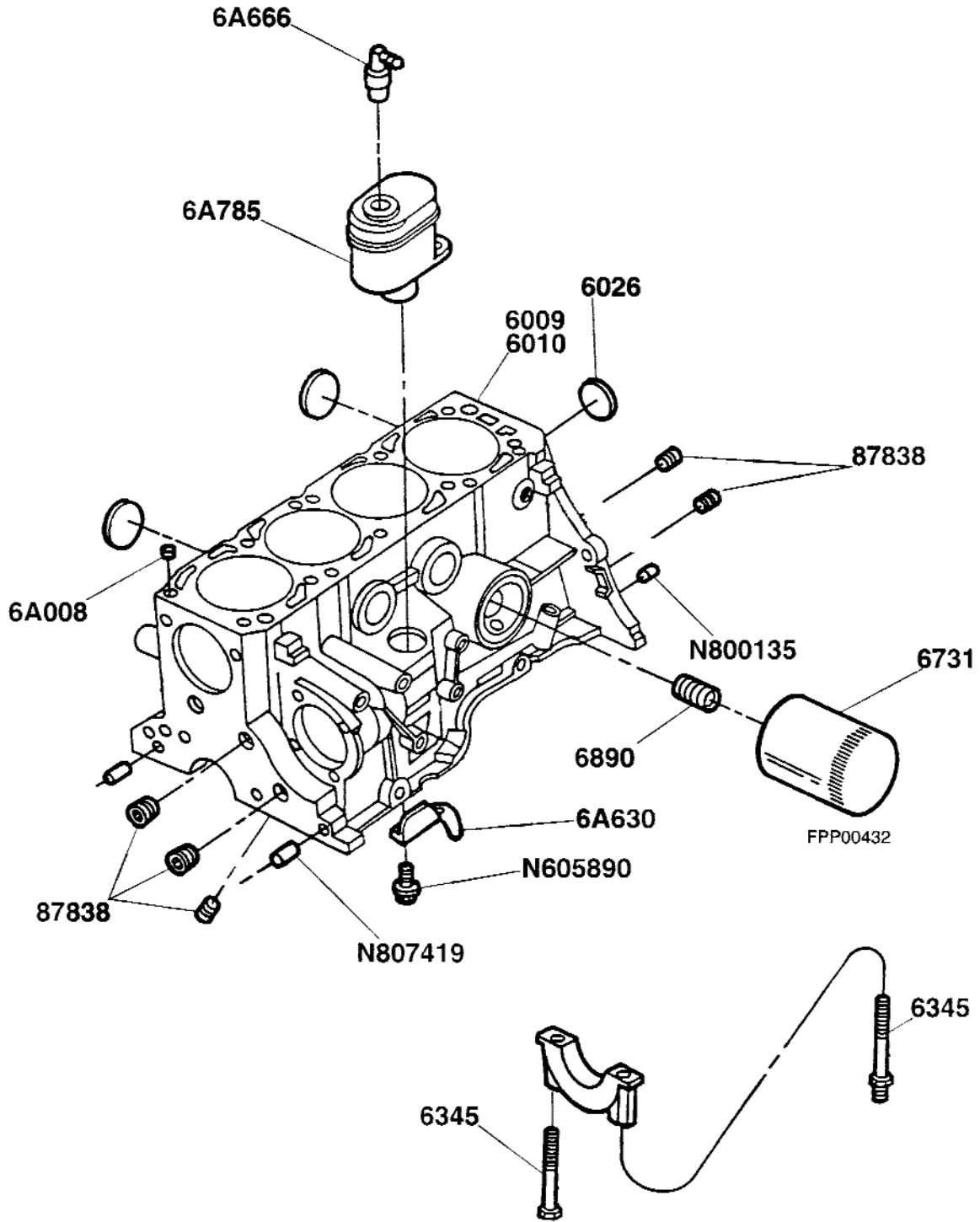
2.5L GAS ENGINE SERVICE RECOMMENDATIONS

| Maintenance Tasks | Level 1 | Task Comp. (Date-Initials) | Level 2 | Task Comp. (Date-Initials) | Level 3 | Task Comp. (Date-Initials) | Level 4 | Task Comp. (Date-Initials) |
|--|---|----------------------------|--|----------------------------|--|----------------------------|--|----------------------------|
| | Recommended to be done monthly/ 10 hrs. | | Required to be done 3 months/ Break-in 30 hrs. | | Required to be done Semi-annually/ 50 hrs. | | Required to be done Annually/ 100 hrs. | |
| 1. Disable the unit from operating per the first page warning. | ○ | | ○ | | ○ | | ○ | |
| 2. Check the engine oil level. Adjust as necessary. | ○ | | ○ | | ○ | | ○ | |
| 3. Check the engine coolant level. Adjust as necessary. | ○ | | ○ | | ○ | | ○ | |
| 4. Check the engine coolant thermal protection level. Correct as necessary. | | | | | | | ○ | |
| 5. Check the natural gas delivery system. Tighten connections as necessary. | | | ○ | | ○ | | ○ | |
| 6. Check the air inlets and outlets for debris. Clean as necessary. | ○ | | ○ | | ○ | | ○ | |
| 7. Check the battery electrolyte level if accessible. Adjust as necessary. | ○ | | ○ | | ○ | | ○ | |
| 8. Check the battery posts, cables, and charger for loose connections, corrosion, and proper operation. Correct as necessary. | ○ | | ○ | | ○ | | ○ | |
| 9. Check the unit wiring for loose connections, corrosion, and damage. Correct as necessary. | | | | | | | ○ | |
| 10. Check the engine accessory drive belts for wear, weather cracking and damage. Replace as necessary. | | | | | | | ○ | |
| 11. Visually inspect the unit looking for leaks, wear or damage, loose connections or components, and corrosion. Correct as necessary. | ○ | | ○ | | ○ | | ○ | |
| 12. Test the engine and transfer switch safety devices. Correct and/or adjust as necessary. | | | | | | | ○ | |

2.5L GAS ENGINE SERVICE RECOMMENDATIONS

| Maintenance Tasks | Level 1 | | Level 2 | | Level 3 | | Level 4 | |
|---|---|--------------------------------------|--|--------------------------------------|---|--------------------------------------|---|--------------------------------------|
| | Recom- mended to be done monthly/ 10 hrs. | Task Comp. (Date- Initials) | Required to be done 3 months/ Break-in 30 hrs. | Task Comp. (Date- Initials) | Required to be done Semi- annually/ 50 hrs. | Task Comp. (Date- Initials) | Required to be done Annually/ 100 hrs. | Task Comp. (Date- Initials) |
| 13. Initiate an automatic start and transfer of the unit to site load and exercise it for at least 1 hour looking for leaks, loose connections or components, and abnormal operating conditions. Correct as necessary. | | | ○ | | ○ | | | |
| 14. Start and exercise the unit at full rated load (use a load bank if the site load is not enough) for at least 2 hours looking for leaks, loose connections or components, and abnormal operating conditions. Correct as necessary. | | | | | | | ○ | |
| 15. Change the engine oil. | | | ○ | | | | ○ | |
| 16. Replace the engine oil filter(s). | | | ○ | | | | ○ | |
| 17. Replace the engine air filter(s). | | | | | | | ○ | |
| 18. Check the engine spark plugs. Clean and re-gap or replace as necessary. | | | ○ | | | | ○ | |
| 19. Perform a 5 minute no-load operational run of the unit looking for any post service problems. | | | ○ | | | | ○ | |
| 20. Return the unit to standby setup for operation when required. | ○ | | ○ | | ○ | | ○ | |

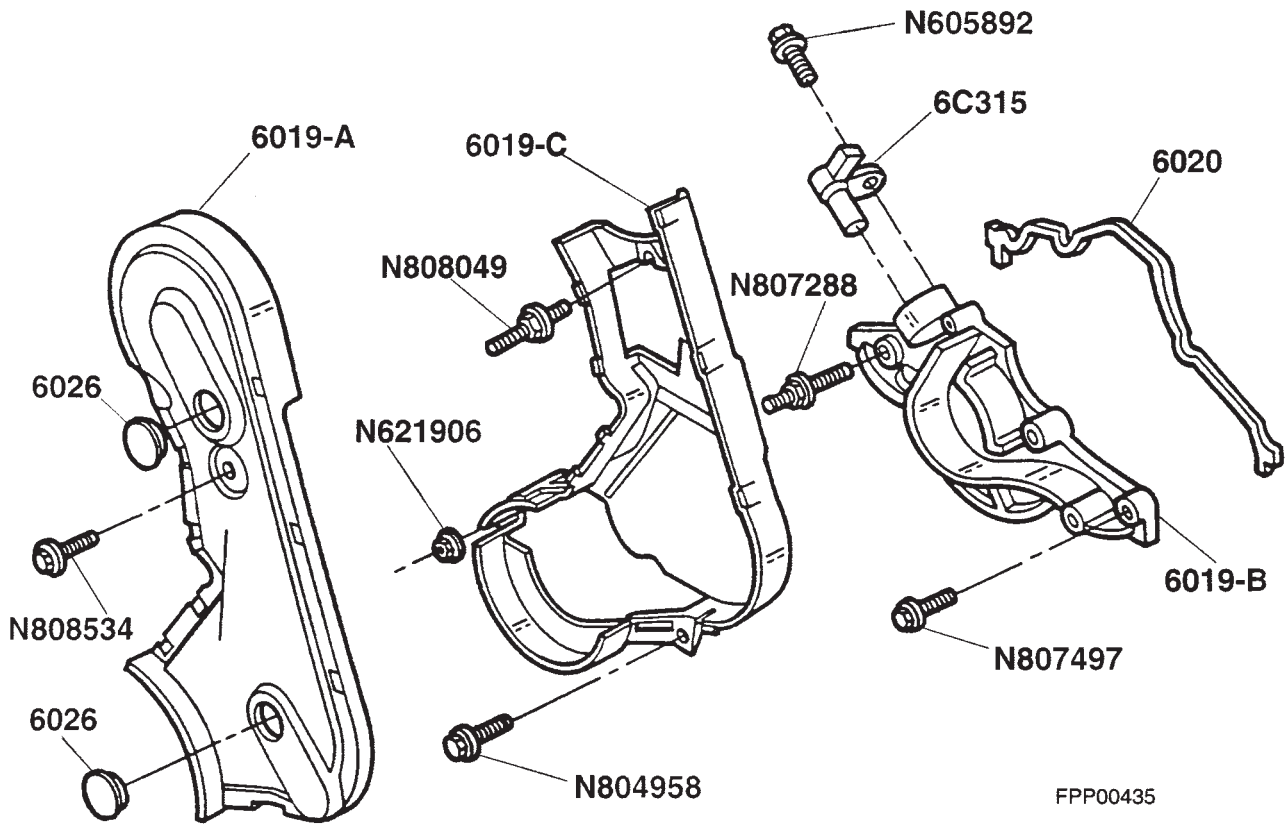
2.5L GAS ENGINE CYLINDER BLOCK & RELATED PARTS



2.5L GAS ENGINE CYLINDER BLOCK & RELATED PARTS

| ITEM | PART NUMBER | DESCRIPTION | QTY |
|---------|-------------|---|-----|
| 6009 | 0E96180100 | CYLINDER BLOCK & CRANKSHAFT ASY. INCLUDES CRNK SHFT, RODS, PISTONS, INTERNAL COMPONENTS. | 1 |
| 6010 | 0E96180101 | CYLINDER BLOCK ONLY | 1 |
| 6731 | 0E96180102 | OIL FILTER | 1 |
| 6890 | 0E96180103 | INSERT, OIL FILTER | 1 |
| 87838 | 0E96180104 | PIPE PLUG 3/8(2FRNT,2REAR,1BTM) | 5 |
| 6A630 | 0E96180105 | BAFFLE, CRANKCASE VENT | 1 |
| 6A785 | 0E96180106 | OIL SEPERATOR | 1 |
| 6A666 | 0E96180107 | VALVE ASY,REGULATING CRANKCASE VENT | 1 |
| 6A008 | 0E96180108 | DOWEL, CYC HEAD TO BLOCK | 2 |
| N807419 | 0E96180109 | BUSHING, FRONT COVER TO BLOCK | 2 |
| N800135 | 0E96180110 | DOWEL PIN, FLYWHEEL TO BLOCK | 2 |
| N605890 | 0E96180111 | BOLT, BAFFLE PLATE TO CYC. BLOCK M6X1X14 | 2 |
| 6345 | 0E96180116 | STUD, BEARING CAP TO OIL PUMP SCREEN | 1 |
| 6345 | 0E96180117 | BOLT, MAIN BEARING CAP M12X1.75X80HEX | 9 |
| 6026 | 0E96180118 | PLUG,CYL. BLOCK&CYL, HEAD 38.3MM CUP | 5 |

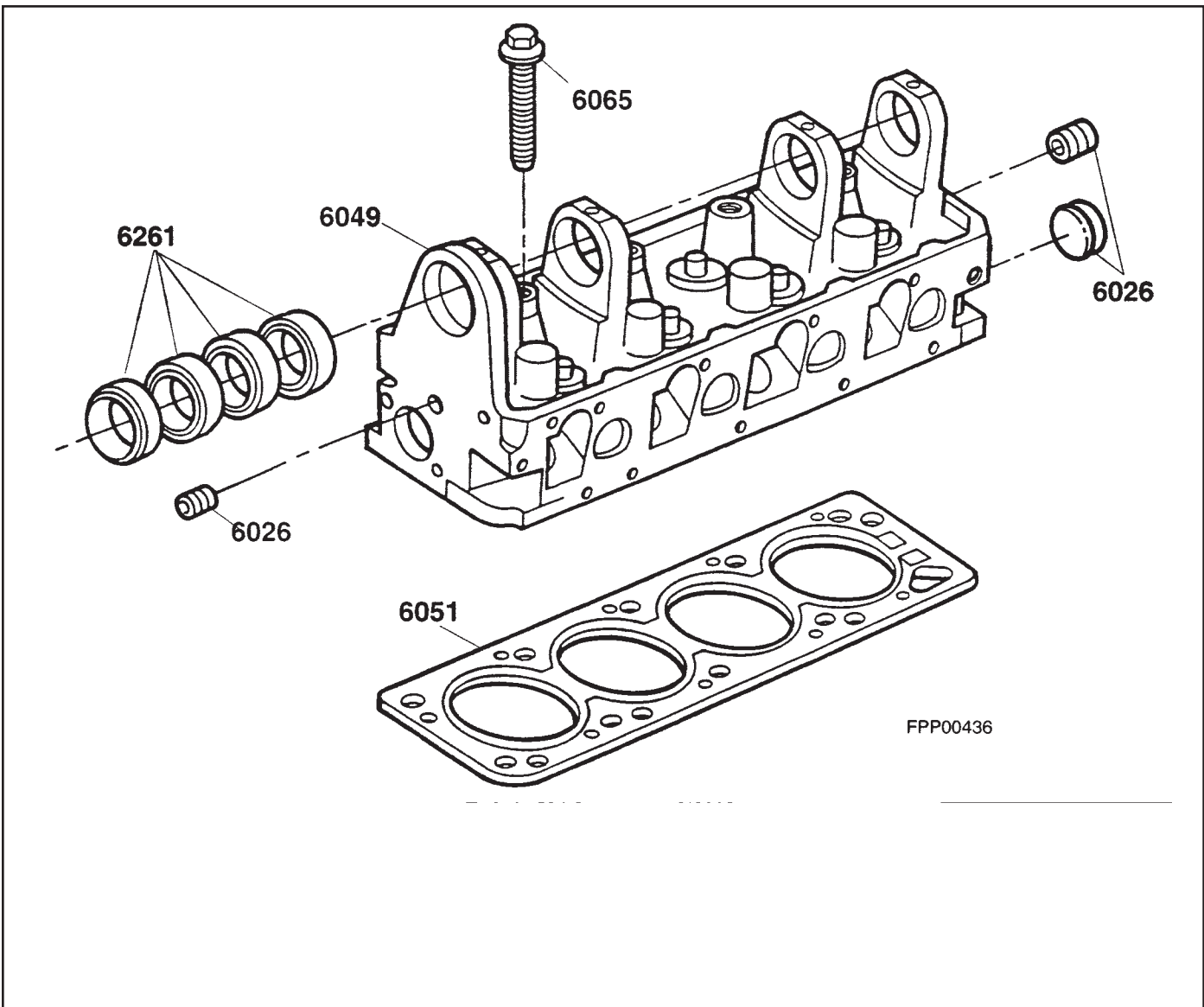
2.5L GAS ENGINE TIMING BELT COVERS



2.5L GAS ENGINE TIMING BELT COVERS

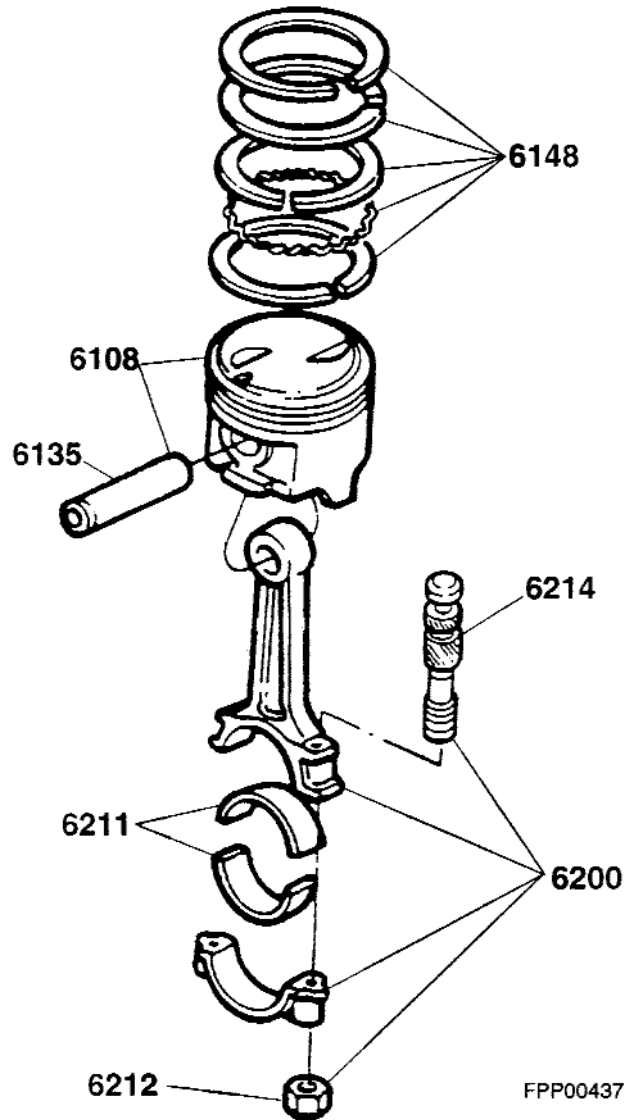
| ITEM | PART NUMBER | DESCRIPTION | QTY |
|---------|-------------|--|-----|
| 6019-B | 0E96180119 | COVER ASY. ENG. FRONT WITH SEAT | 1 |
| 6020 | 0E96180120 | GASKET, FRONT COVER ASY. | 1 |
| 6019-C | 0E96180121 | COVER, TIMING BELT INNER | 1 |
| 6019-A | 0E96180122 | COVER, TIMING BELT OUTER | 1 |
| 6C315 | 0E96180123 | SENSOR ASY. CRANKSHAFT TIMING FRNT CVR | 1 |
| N605892 | 0E96180124 | SCREW CRNKSHFT. SENSOR M6X1.0X20 | 1 |
| N621906 | 0E96180125 | NUT & WASHER, FRNT CVR M6X1.0 | 1 |
| N804958 | 0E96180126 | SCREW & WASHER, INNER CVR M6X1.0X22.5 | 1 |
| N807288 | 0E96180127 | STUD, TIMING BELT CVR TO FRNT CVR M6X1X1X1X61.8 | 1 |
| N807497 | 0E96180128 | BOLT, FRONT CVR M6X37.5 | 3 |
| N808049 | 0E96180129 | STUD, INNER CVR TO CYL HEAD M8X1.25X51 | 1 |
| N808534 | 0E96180130 | BOLT, TIMING BELT CVR OUTER M6X1X17 | 1 |
| 6026 | 0E96180131 | PLUG BUTTON, 31.8 | 2 |

2.5L GAS ENGINE CYLINDER HEAD



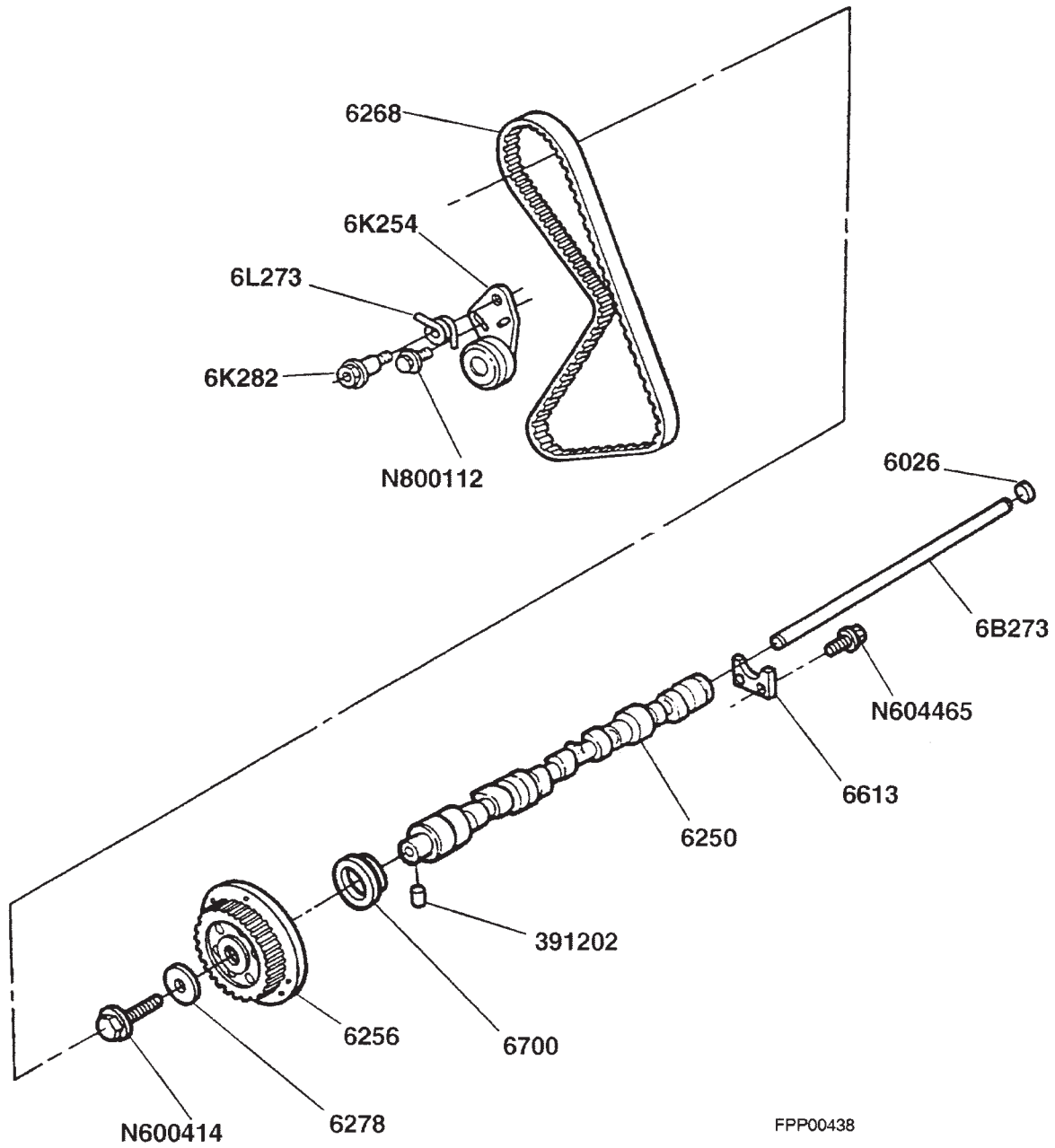
| ITEM | PART NUMBER | DESCRIPTION | QTY |
|------|-------------|---|-----|
| 6049 | 0E96180132 | CYL HEAD W/PLUGS& CAM BRGS: NO VALVES OR CAMSHFT | 1 |
| 6051 | 0E96180133 | GASKET CAYLINDER HEAD | 1 |
| 6261 | 0E96180134 | BEARING , CAMSHAFT | 4 |
| 6261 | 0E96180135 | BEARING , CAMSHAFT .015 U.S. | AR |
| 6026 | 0E96180136 | PIPE PLUG 1/4-18 CYL. HEAD | 3 |
| 6065 | 0E96180137 | BOLT - CYL. HEAD | 10 |
| 6026 | 0E96180138 | PLUG-CYC. BLOCK& CYL HEAD 38.3 MM CUP | 5 |

2.5L GAS ENGINE PISTON ASSEMBLY



| ITEM | PART NUMBER | DESCRIPTION | QTY |
|------|-------------|---|-----|
| 6108 | 0E96180139 | PISTON & PIN ASY. STD PISTON | 4 |
| 6148 | 0E96180140 | PISTON RING SET STD (WILL SERVICE 2 PISTONS) | 2 |
| 6200 | 0E96180141 | ROD - CONNECTING | 4 |
| 6211 | 0E96180142 | BEARING- CONNECTING ROD | 8 |
| 6214 | 0E96180143 | BOLT- CONNECTING ROD | 8 |
| 6212 | 0E96180144 | NUT-CONNECTING ROD | 8 |

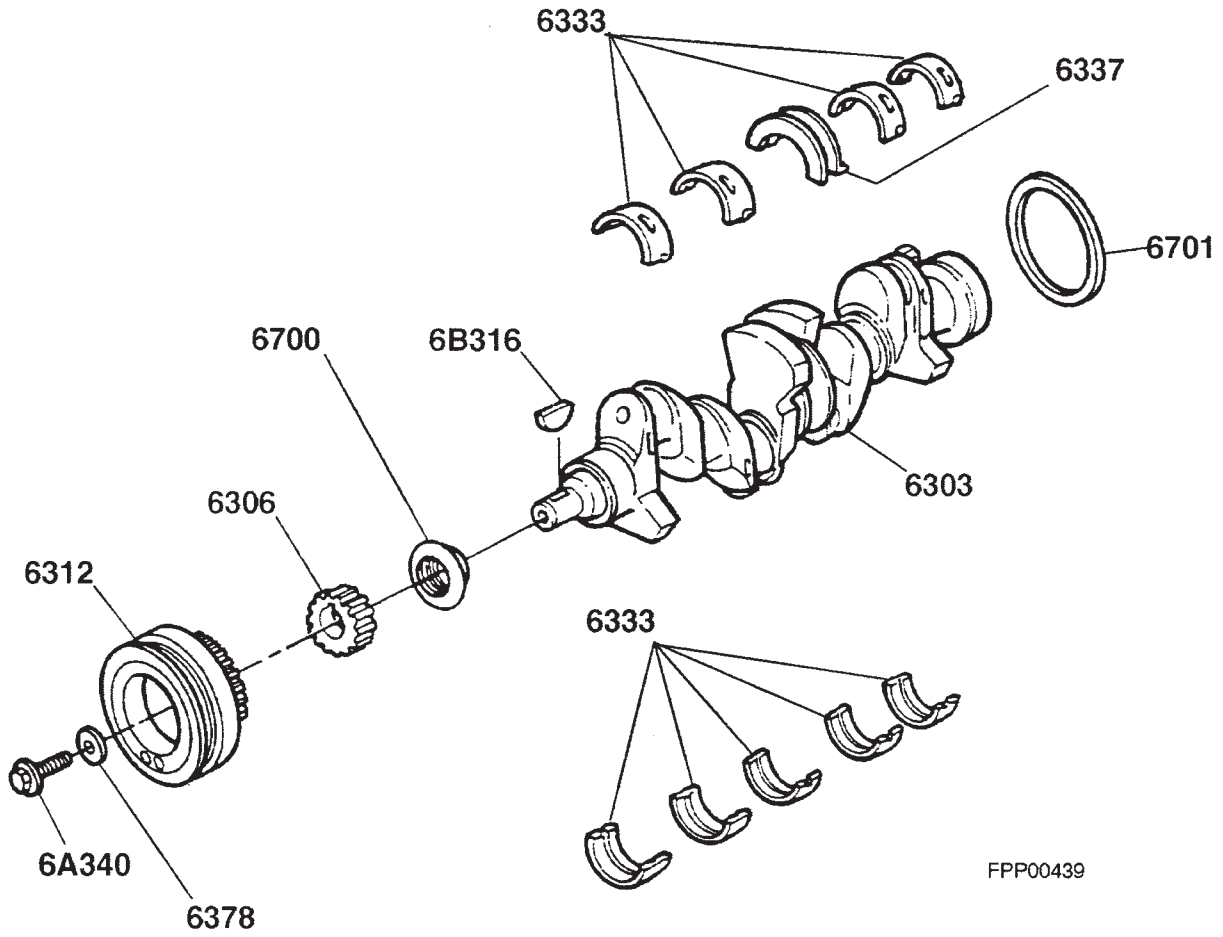
2.5L GAS ENGINE CAMSHAFT & TIMING BELT



2.5L GAS ENGINE CAMSHAFT & TIMING BELT

| ITEM | PART NUMBER | DESCRIPTION | QTY |
|---------|-------------|--|-----|
| 6026 | 0E96180145 | PLUG -.81 CUP | 1 |
| 6250 | 0E96180146 | CAMSHAFT- FINISHED (ROLLER) | 1 |
| 6256 | 0E96180147 | SPROCKET- CAMSHAFT | 2 |
| 6268 | 0E96180148 | BELT TIMING | 1 |
| 6278 | 0E96180149 | WASHER, CAMSHAFT SPROCKET | 1 |
| 391202 | 0E96180150 | DOWEL PIN - CAM SPROCKET 1/4 DIA. X.32 | 1 |
| 6613 | 0E96180151 | RETAINER, CAMSHAFT | 1 |
| 6B273 | 0E96180152 | ROD, CAM OIL FLOW CONTROL | 1 |
| 6K254 | 0E96180153 | TENSIONER ASY. ,TIMING BELT | 1 |
| 6K282 | 0E96180154 | BOLT- TENSIONER TO CYL. HEAD | 1 |
| 6L273 | 0E96180155 | SPRING- TIMING BELT | 1 |
| N600414 | 0E96180156 | BOLT-CAM SPROCKET M12X1.75X45 | 1 |
| N604465 | 0E96180157 | SCREW-CAMSHAFT PLATE M6X1.0X12 | 2 |
| N800112 | 0E96180158 | SCREW & WASHER TENSIONER T-BELT | 1 |

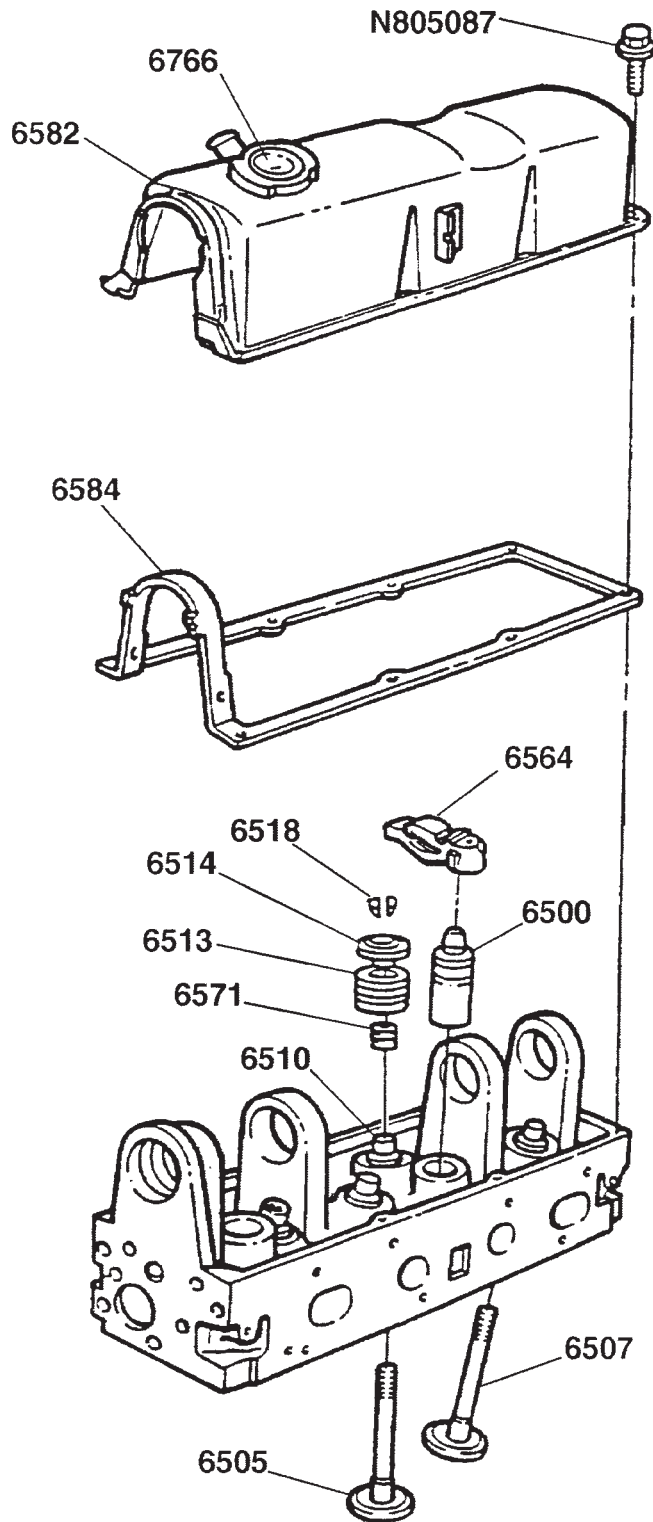
2.5L GAS ENGINE CRANKSHAFT & BEARINGS



2.5L GAS ENGINE CRANKSHAFT & BEARINGS

| ITEM | PART NUMBER | DESCRIPTION | QTY |
|---------|-------------|---|-----|
| N800112 | 0E96180158 | SCREW & WASHER TENSIONER T-BELT | 1 |
| 6303 | 0E96180159 | CRANKSHAFT, FINISHED | 1 |
| 6306 | 0E96180160 | SPROCKET, CRANKSHAFT | 1 |
| 6312 | 0E96180161 | DAMPER ASY., CRANKSHAFT | 1 |
| 6333 | 0E96180162 | BEARING, MAIN CRANKSHAFT UPPER STD. | 4 |
| 6333 | 0E96180163 | BEARING, MAIN CRANKSHAFT UPPER .02 MM U.S. | AR |
| 6333 | 0E96180164 | BEARING, MAIN CRANKSHAFT UPPER .05 MM U.S. | AR |
| 6333 | 0E96180165 | BEARING, MAIN CRANKSHAFT UPPER .25 MM U.S. | AR |
| 6333 | 0E96180166 | BEARING, MAIN CRANKSHAFT UPPER .50 MM U.S. | AR |
| 6333 | 0E96180167 | BEARING, MAIN CRANKSHAFT UPPER .75 MM U.S. | AR |
| 6333 | 0E96180168 | BEARING, MAIN CRANKSHAFT UPPER 1.00 MM U.S. | AR |
| 6337 | 0E96180169 | BEARING, THRUST CRANKSHAFT UPPER STD. | 1 |
| 6337 | 0E96180170 | BEARING, THRUST CRANKSHAFT UPPER STD. | AR |
| 6337 | 0E96180171 | BEARING, THRUST CRANKSHAFT UPPER STD. | AR |
| 6337 | 0E96180172 | BEARING, THRUST CRANKSHAFT UPPER STD. | AR |
| 6337 | 0E96180173 | BEARING, THRUST CRANKSHAFT UPPER STD. | AR |
| 6337 | 0E96180174 | BEARING, THRUST CRANKSHAFT UPPER STD. | AR |
| 6337 | 0E96180175 | BEARING, THRUST CRANKSHAFT UPPER STD. | AR |
| 6333L | 0E96180176 | BEARING, CRANKSHAFT MAIN LWR. STD | 5 |
| 6333L | 0E96180177 | BEARING, CRANKSHAFT MAIN LWR. .02 MM U.S. | AR |
| 6333L | 0E96180178 | BEARING, CRANKSHAFT MAIN LWR. .05 MM U.S. | AR |
| 6333L | 0E96180179 | BEARING, CRANKSHAFT MAIN LWR. .25 MM U.S. | AR |
| 6333L | 0E96180180 | BEARING, CRANKSHAFT MAIN LWR. .50 MM U.S. | AR |
| 6333L | 0E96180181 | BEARING, CRANKSHAFT MAIN LWR. .75 MM U.S. | AR |
| 6333L | 0E96180182 | BEARING, CRANKSHAFT MAIN LWR. 1.00 MM U.S. | AR |
| 6378 | 0E96180183 | WASHER, CRANKSHAFT DAMPER | 1 |
| 6700 | 0E96180184 | SEAL, CRANKSHAFT FRT.,CAMSHAFT,OIL PUMP SHAFT | 3 |
| 6701 | 0E96180185 | SEAL, CRANKSHAFT REAR | 1 |
| 6A340 | 0E96180187 | BOLT, CRANK PULLEY | 1 |
| 6B316 | 0E96180188 | KEY, CRANK SHAFT | 1 |

2.5L GAS ENGINE VALVE ASSEMBLIES & ROCKER ARM COVER

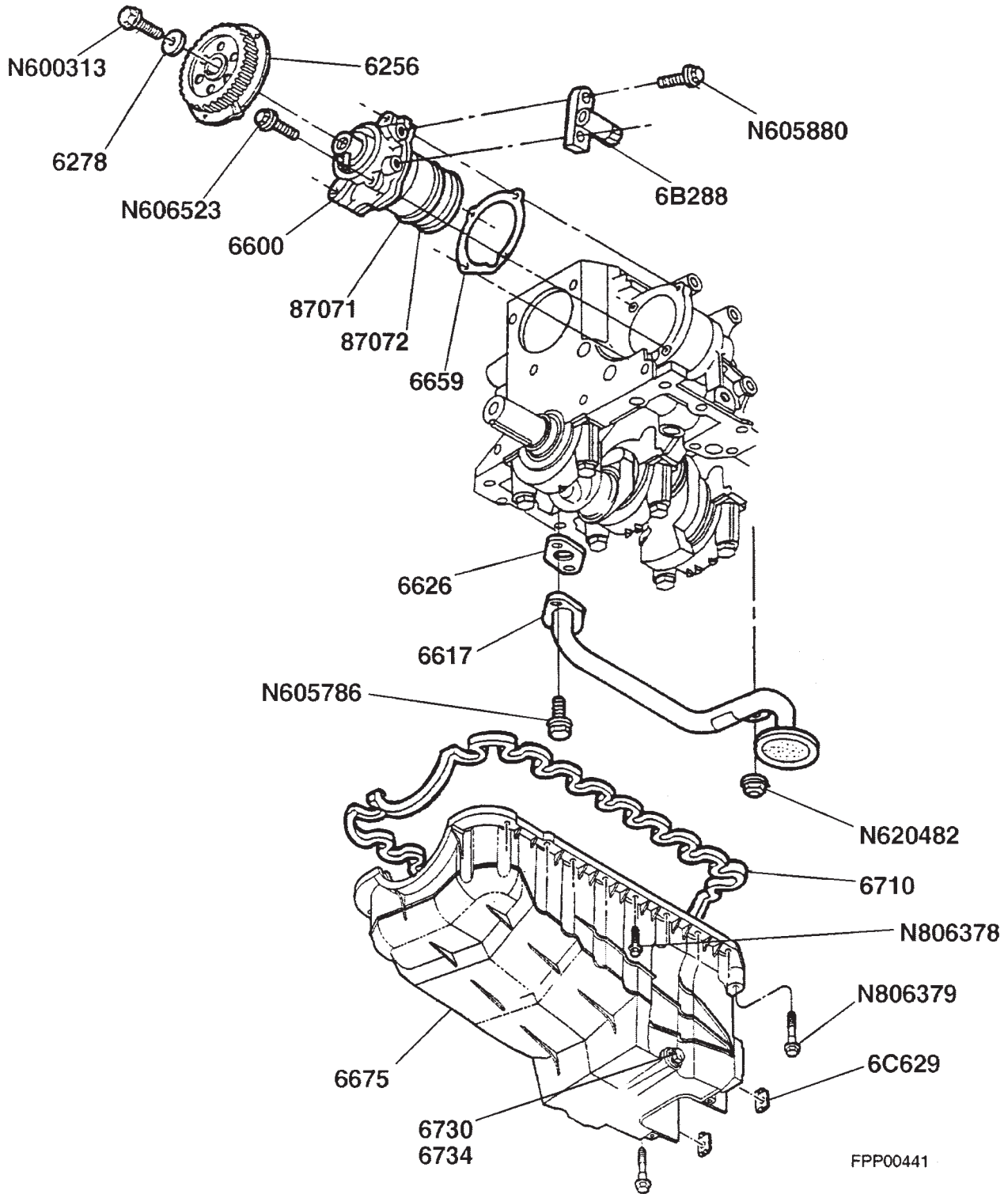


FPP00440

2.5L GAS ENGINE VALVE ASSEMBLIES & ROCKER ARM COVER

| ITEM | PART NUMBER | DESCRIPTION | QTY |
|---------|-------------|---|-----|
| 6505 | 0E96180189 | VALVE, CYL. HEAD EXHAUST STD. | 4 |
| 6505 | 0E96180190 | VALVE, CYL. HEAD EXHAUST .015 O.S.. | AR |
| 6505 | 0E96180191 | VALVE, CYL. HEAD EXHAUST .030 O.S. | AR |
| 6507 | 0E96180192 | VALVE, CYL. HEAD INTAKE STD. | 4 |
| 6507 | 0E96180193 | VALVE, CYL. HEAD INTAKE .015 O.S. | AR |
| 6507 | 0E96180194 | VALVE, CYL. HEAD INTAKE .030 O.S.. | AR |
| 6510 | 0E96180195 | BUSHING, VALVE GUIDE | 4 |
| 6513 | 0E96180196 | SPRING, INT./EXH. VALVE | 8 |
| 6571 | 0E96180197 | SEAL, VALVE STEM | 8 |
| 6500 | 0E96180198 | TAPPET, VALVE ADJUSTER | 8 |
| 6514 | 0E96180199 | RETAINER, VALVE SPRING | 8 |
| 6518 | 0E96180200 | KEY, VALVE SPRING RETAINER | 16 |
| 6564 | 0E96180201 | ROCKER ARM, CYL. HEAD | 8 |
| 6582 | 0E96180202 | COVER ASY. VALVE ROCKER ARM WITH FILLER CAP | 1 |
| 6584 | 0E96180203 | GASKET, VALVE/ROCKER ARM COVER | 1 |
| 6766 | 0E96180204 | CAP, OIL FILLER | 1 |
| N805087 | 0E96180205 | BOLT, ROCKER ARM COVER M6X1.0X15 | 9 |

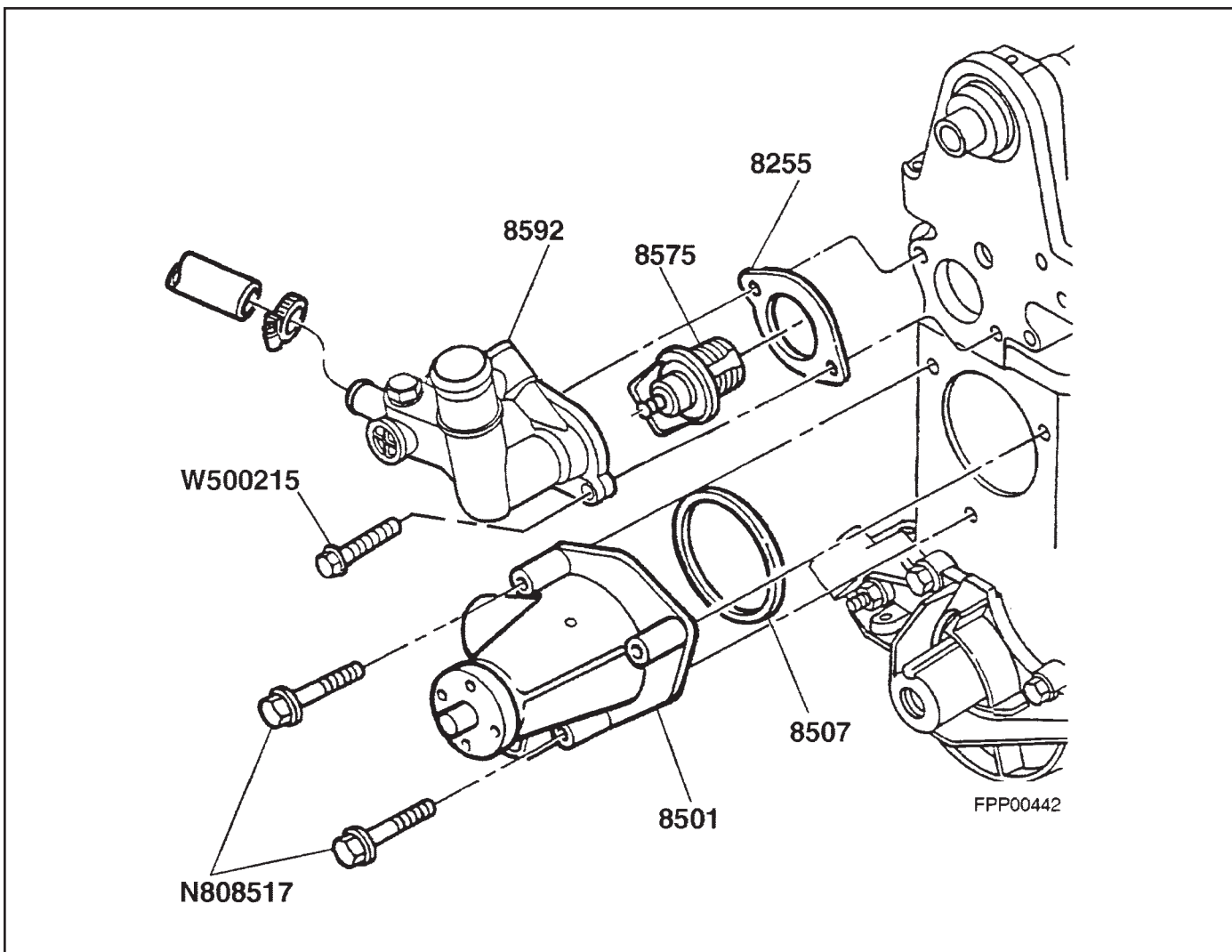
2.5L GAS ENGINE OIL PUMP & OIL PAN



2.5L GAS ENGINE OIL PUMP & OIL PAN

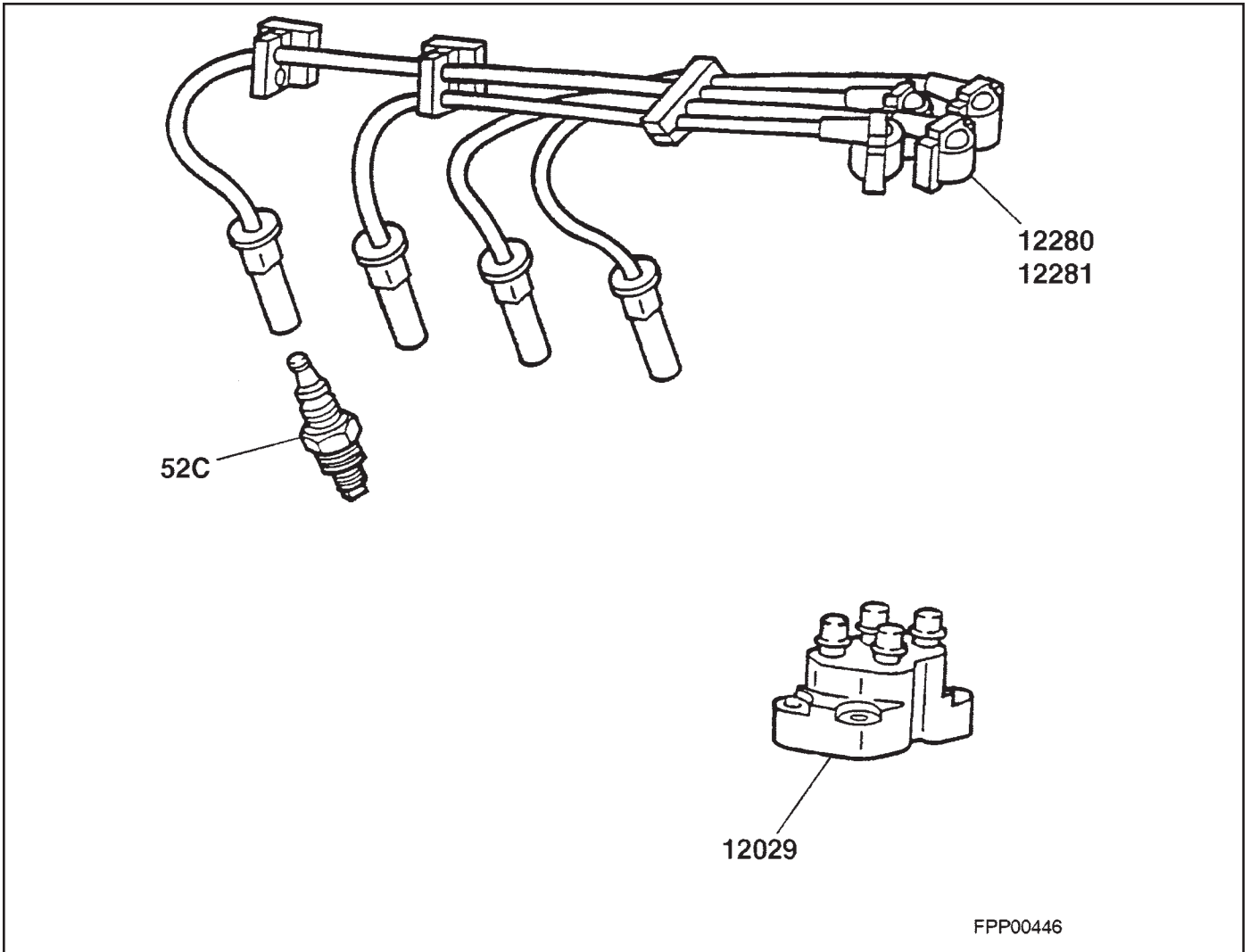
| ITEM | PART NUMBER | DESCRIPTION | QTY |
|---------|-------------|---|-----|
| 6256 | 0E96180206 | SPROCKET, OIL PUMP | 1 |
| NO REF | 0E96180207 | GASKET, OIL PUMP COVER TO TIMING HOUSING | 1 |
| 6600 | 0E96180208 | PUMP, OIL (LESS SCREEN) | 1 |
| 6617 | 0E96180209 | TUBE, OIL PICKUP WITH SCREEN | 1 |
| 6626 | 0E96180210 | GASKET, OIL PICKUP TUBE | 1 |
| 6659 | 0E96180211 | GASKET, OIL PUMP TO BLOCK | 1 |
| 6675 | 0E96180212 | PAN, ENGINE OIL | 1 |
| 6710 | 0E96180213 | GASKET, OIL PAN | 1 |
| 87071 | 0E96180214 | SEAL 2 1/4 X.14 (O-RING) OIL PUMP TO BLOCK | 1 |
| 87072 | 0E96180215 | SEAL 2 3/8 X.14 (O-RING) OIL PUMP TO BLOCK | 1 |
| 6278 | 0E96180216 | WASHER, OIL PUMP | 1 |
| 6B288 | 0E96180217 | SENSOR ASY., CYL IDENTIFICATION | 1 |
| N600313 | 0E96180218 | BOLT, OIL PUMP SPROCKET M10X1.5X40 | 1 |
| N605786 | 0E96180219 | BOLT, OIL PUMP SCREEN & COVER M8X1.25X20 | 2 |
| N606523 | 0E96180220 | BOLT M6X1X47.5 OIL PUMP TO CYL. BLOCK | 4 |
| N605880 | 0E96180221 | BOLT,CAMSHAFT SENSOR M5X.8X20 | 2 |
| N806378 | 0E96180222 | BOLT, OIL PAN TO BLOCK M6X27.5 HEX FLANGE HEAD | 16 |
| N806379 | 0E96180223 | BOLT, OIL PAN TO FRNT CVR M6X52.5 HEX FLANGE HEAD | 2 |
| NO REF | 0E96180224 | PLUG, 11.4MM CUP OIL PUMP | 1 |
| N620482 | 0E96180225 | NUT, OIL PICKUP TUBE 10X1.5 | 1 |
| 6C629 | 0E96180226 | SPACER, OIL PAN .009 | AR |
| 6C629 | 0E96180227 | SPACER, OIL PAN .0185 | AR |
| 6C629 | 0E96180228 | SPACER, OIL PAN .028 | AR |
| 6730 | 0E96180229 | PLUG, OIL PAN DRAIN | 1 |

2.5L GAS ENGINE WATER PUMP & THERMOSTAT



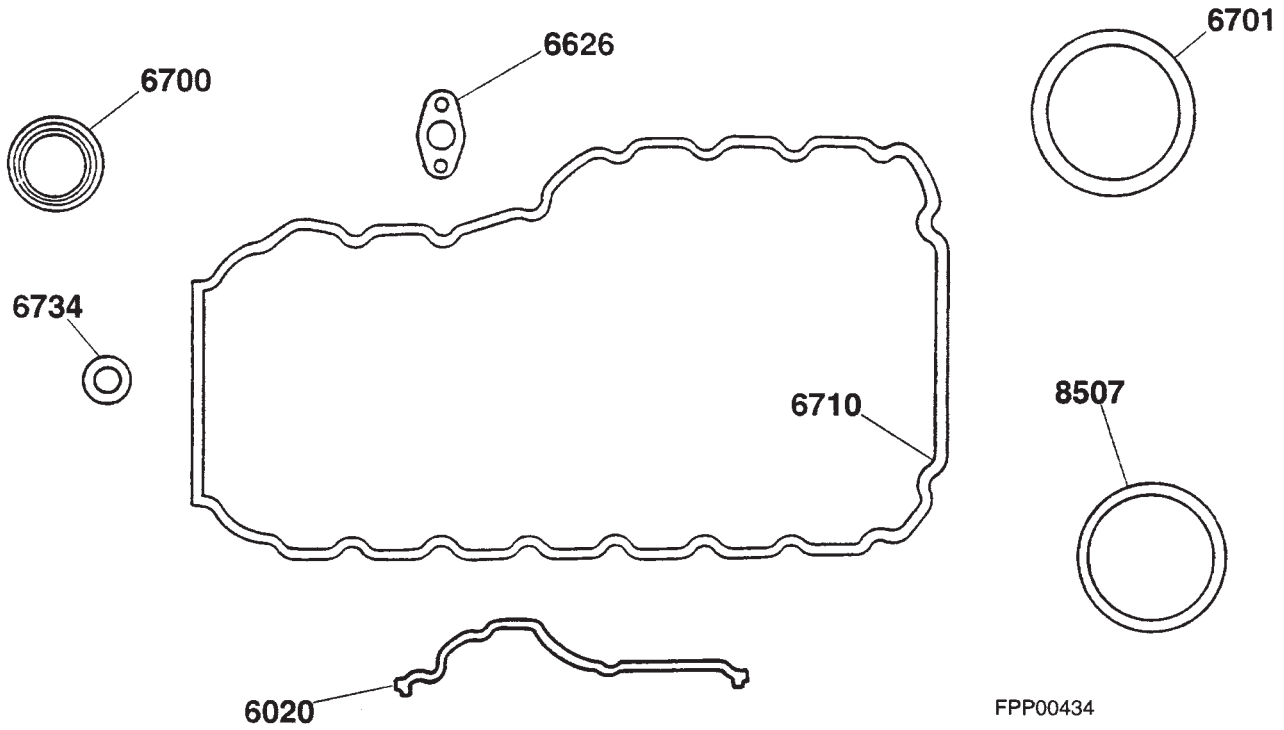
| ITEM | PART NUMBER | DESCRIPTION | QTY |
|---------|-------------|---|-----|
| 6026 | 0E96180230 | PLUG .75 CUP WATER PUMP | 1 |
| 8255 | 0E96180231 | GASKET, WATER OUTLET CONNECTION | 1 |
| 8501 | 0E96180232 | WATER PUMP ASY. | 1 |
| 8507 | 0E96180233 | GASKET, WATER PUMP | 1 |
| 8592 | 0E96180234 | CONNECTION, WATER OUTLET CYL. HEAD | 1 |
| N808517 | 0E96180235 | BOLT, WATER PUMP TO CYL. BLOCK M8X1.25X53 | 3 |
| W500215 | 0E96180236 | SCREW, WATER OUTLET CYL. HEAD | 2 |
| 8575 | 0E96180237 | M6X25 HEX FLANGE THERMOSTAT ASSEMBLY | 1 |
| 87056 | 0E96180238 | SEAL 3/16X.14 | 1 |

2.5L GAS ENGINE IGNITION SYSTEM



| ITEM | PART NUMBER | DESCRIPTION | QTY |
|-------|-------------|-------------------------------------|-----|
| 12029 | 0E96180239 | COIL ASY, IGNITION | 1 |
| 12281 | 0E96180240 | WIRE SET & BRACKET ASY. SPARK PLUGS | 1 |
| 52C | 0E96180241 | SPARK PLUG | 4 |

2.5L GAS ENGINE GASKET KIT LOWER

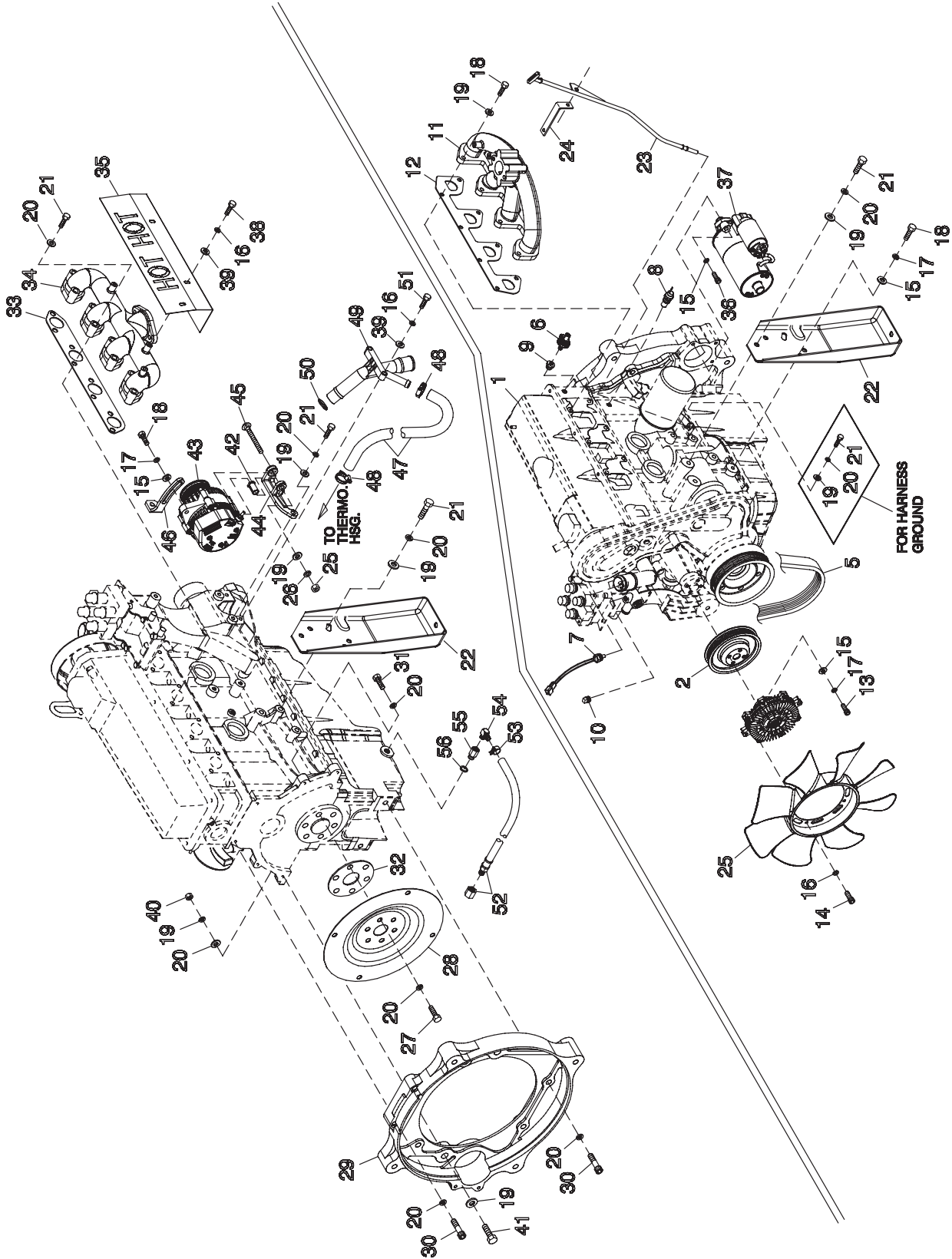


2.5L GAS ENGINE GASKET KIT LOWER

| ITEM | PART NUMBER | DESCRIPTION | QTY |
|------|-------------------------|---|-----|
| | 0E96180242 | GASKET KIT LOWER | 1 |
| | CONTAINS THE FOLLOWING: | | |
| 6701 | 0E96180185 | SEAL, CRANKSHAFT REAR | 1 |
| 6700 | 0E96180184 | SEAL, CRANKSHAFT FRT., CAMSHAFT, OIL PUMP SHAFT 3 | 1 |
| 6734 | 0E96180243 | GASKET, OIL DRAIN PLUG | 1 |
| 6020 | 0E96180120 | GASKET,FRONT COVER ASY | 1 |
| 6626 | 0E96180210 | GASKET, OIL PICKUP TUBE | 1 |
| 8507 | 0E96180233 | GASKET, WATER PUMP | 1 |
| 6710 | 0E96180213 | GASKET, OIL PAN | 1 |

2.5L GAS ENGINE COMMON PARTS

GROUP D



EXPLODED VIEW:
ENGINE COMMON PARTS
DRAWING #: 0E9918

PAGE 1 OF 2

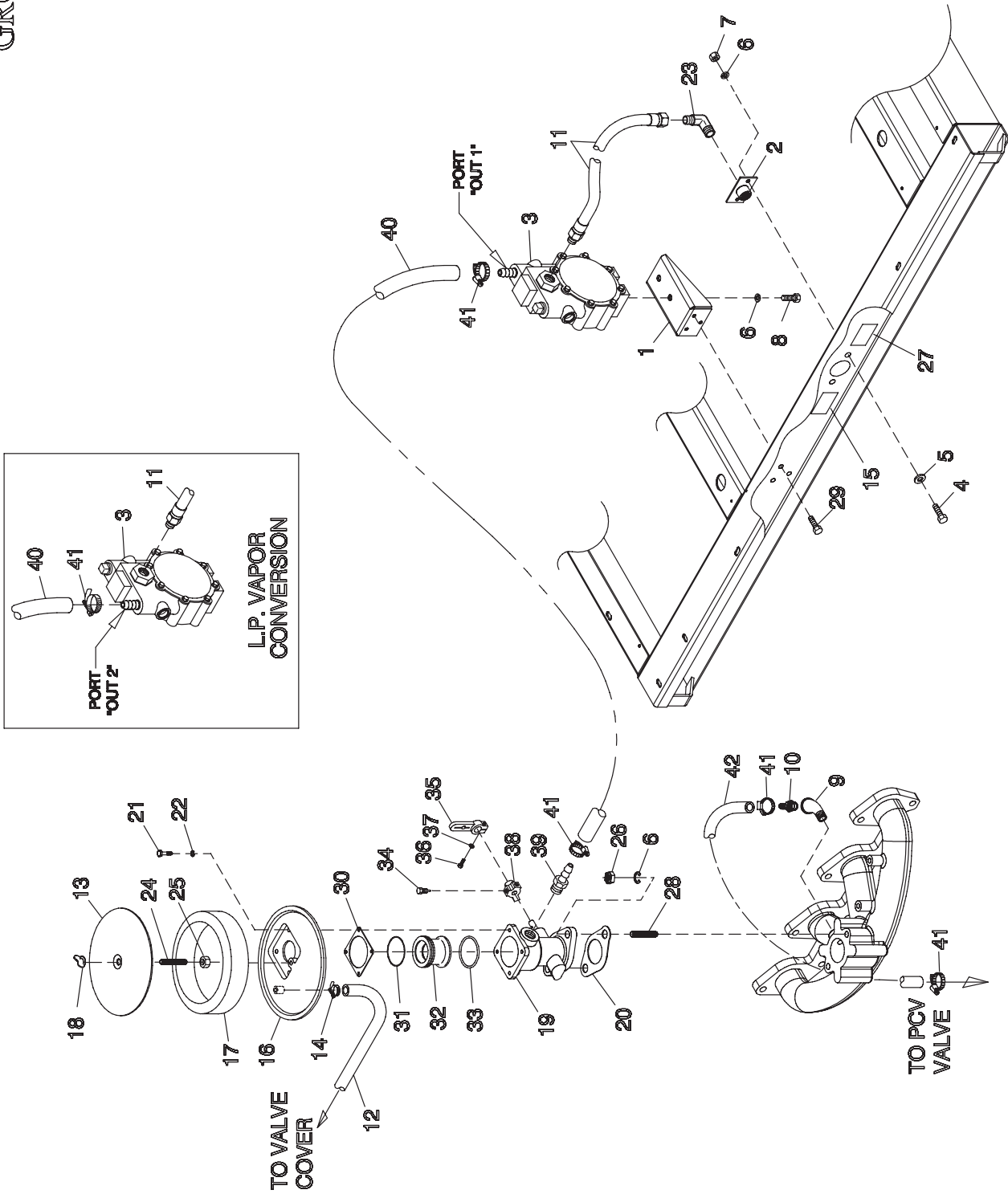
DATE: 12/17/03

2.5L GAS ENGINE COMMON PARTS

| ITEM | PART NUMBER | DESCRIPTION | QTY |
|------|-------------|--------------------------------------|-----|
| 1 | 0E9909 | ENGINE 2.5L FORD | REF |
| 2 | 0E9739 | PULLEY, 2.5L FORD WATER PUMP | 1 |
| 4 | 0F0001 | CLUTCH, COOLING FAN 2.5L FORD | 1 |
| 5 | 0D3488B | SERPENTINE BELT - 41 3/8" LENGTH | 1 |
| 6 | 0A8584 | SWITCH,OIL PRESSURE,10PSI,2POL | 1 |
| 7 | 0E0561 | ASSY WATER LEVEL SENSOR C/E PL | 1 |
| 8 | 0A6751 | SW-TMP 245DEG 3/8NPT | 1 |
| 9 | 035579 | BUSHING REDUCER 1/4 TO 1/8 | 1 |
| 10 | 026925 | PLUG STD PIPE 3/8 STEEL SQ HD | 1 |
| 11 | 0E9611 | MANIFOLD, INTAKE (MACHINED) | 1 |
| 12 | 0E9681 | GASKET, 2.5L FORD INTAKE MAN. | 1 |
| 13 | 040976 | SCREW SHC M8-1.25 X 20 G12.9 | 3 |
| 14 | 097962 | SCREW SHC M6-1.0 X 25 G12.9 ZP | 4 |
| 15 | 022145 | WASHER FLAT 5/16-M8 ZINC | 8 |
| 16 | 022097 | WASHER LOCK M6-1/4 | 10 |
| 17 | 022129 | WASHER LOCK M8-5/16 | 5 |
| 18 | 043107 | SCREW HHC M8-1.25 X 25 G8.8 | 10 |
| 19 | 022131 | WASHER FLAT 3/8-M10 ZINC | 28 |
| 20 | 046526 | WASHER LOCK M10 | 29 |
| 21 | 0C2948 | SCREW SHC M10-1.25 X 50 G10.9 | 8 |
| 22 | 0E9708 | ENGINE FOOT, 2.5L FORD | 2 |
| 23 | 0E9738 | DIPSTICK, 2.5L FORD | 1 |
| 24 | 0E9929 | BRACKET, DIPSTICK TUBE | 1 |
| 25 | 0F0230 | FAN 16" COOLING | 1 |
| 26 | 0E9834 | HARNES, 2.5L FORD ENGINE (NOT SHOWN) | 1 |
| 27 | 0D5417 | SCREW HHC M10-1.0 X 25 G10.9 | 6 |
| 28 | 0E5048B | FLEXPLATE 2.5L FORD | 1 |
| 29 | 0E9655 | ADAPT CASTING MACH 2.5L FORD | 1 |
| 30 | 057192 | SCREW SHC M10-1.5 X 30 G12.9 | 4 |
| 31 | 060619 | SCREW SHC M10-1.50 X 40 G12.9 | 2 |
| 32 | 0E8940 | SPACER FLEXPLATE HSB | 1 |
| 33 | 0E9680 | GASKET, 2.5L FORD EXHAUST MAN. | 1 |
| 34 | 0E9609 | MANIFOLD, EXHAUST (MACHINED) | 1 |
| 35 | 0E9930 | HEAT SHIELD, EXHAUST MANIFOLD | 1 |
| 36 | 049821 | SCREW SHC M8-1.25 X 30 G12.9 | 3 |
| 37 | 0E9747 | STARTER, 12 VOLT | 1 |
| 38 | 043116 | SCREW HHC M6-1.0 X 12 G8.8 | 4 |
| 39 | 022473 | WASHER FLAT 1/4-M6 ZINC | 5 |
| 40 | 045772 | NUT HEX M10-1.5 G8 YEL CHR | 2 |
| 41 | 064416 | SCREW HHC M10-1.5 X 45 G8.8 | 2 |
| 42 | 0F0252 | SPRING BUSHING | 1 |
| 43 | 0E9868 | ALTERNATOR, D.C | 1 |
| 44 | 0F0035 | BRKT,D.C. ALTERNATOR(MACHINED) | 1 |
| 45 | 0F0186 | BOLT CARRIAGE 3/8-16 X 3" LG | 1 |
| 46 | 0E9928 | TENSIONER, D.C. ALTERNATOR | 1 |
| 47 | 0F0383 | HOSE,2.5L FORD COOLANT BY-PASS | 1 |
| 48 | 057823 | CLAMP HOSE #10 .56-1.06 | 2 |
| 49 | 0E9737 | LOWER HOSE ADAPTER,2.5L FORD | 1 |
| 50 | 0F0393 | O-RING 1-3/16 X 1-7/16 X 1/8 | 1 |
| 51 | 045757 | SCREW HHC M6-1.0 X 25 G8.8 | 2 |
| 52 | 069860C | HOSE OIL DRAIN ASSY 21" | 1 |
| 53 | 048031J | HOSE CLAMP BAND 5/8" | REF |
| 54 | 043790 | BARBED EL 90 3/8 NPT X 3/8 | 1 |
| 55 | 077456 | ADAPTER M12-1.75 3/8NPT | 1 |
| 56 | 052677 | WASHER NYLON .50 X .87 X .06 | 1 |
| 57 | 049813 | NUT HEX M6 X 1.0 G8 YEL CHR | 1 |
| 58 | 0E9738A | DIPSTICK TUBE, 2.5L FORD | 1 |

2.5L GAS ENGINE NATURAL GAS FUEL

GROUP E



EXPLODED VIEW:
NATURAL GAS FUEL
DRAWING #: 0E9980

PAGE 1 OF 2

DATE: 12/19/03

2.5L GAS ENGINE NATURAL GAS FUEL

| ITEM | PART NUMBER | DESCRIPTION | QTY |
|------|-------------|--------------------------------|-----|
| 1 | 0E8456 | BRACKET, FUEL REGULATOR | 1 |
| 2 | 075580 | FLANGE FUEL INLET | 1 |
| 3 | 0E9967 | ASSY FUEL REG 2.5L FRD N/G-L/P | 1 |
| 4 | 039253 | SCREW HHC M8-1.25 X 20 G8.8 | 2 |
| 5 | 022145 | WASHER FLAT 5/16 ZINC | 2 |
| 6 | 022129 | WASHER LOCK M8-5/16 | 6 |
| 7 | 045771 | NUT HEX M8-1.25 G8 YEL CHR | 2 |
| 8 | 042907 | SCREW HHC M8-1.25 X 16 G8.8 | 2 |
| 9 | 0D8864 | ELBOW 45D STREET 1/8NPT W/VIB | 1 |
| 10 | 044074 | BARBED STR 1/8NPT X 3/8 | 1 |
| 11 | 0E1056 | FUEL HOSE ASSM. NAT.GAS/L.P.V. | 1 |
| 12 | 0F0397 | HOSE, CRANKCASE BREATHER | 1 |
| 13 | 0A5547 | COVER AIR CLEANER | 1 |
| 14 | 048031C | CLAMP HOSE BAND 1/4 | 3 |
| 15 | 0D1509 | DECAL INLET PRESSURE | 1 |
| 16* | 0E0591 | ADAPTER,CARB.TO AIR CLNR | 1 |
| 17 | 059402 | FILTER ELEMENT | 1 |
| 18 | 037561 | NUT WING 1/4-20 NYLK | 1 |
| 19 | 0E1028 | CARBURETOR ASSY. 1.5L | 1 |
| 20 | 059401 | CARBURETOR GASKET | 1 |
| 21* | 091526 | SCREW PPHM M5-0.8 X 12 ZNC | 4 |
| 22* | 049226 | WASHER LOCK M5 | 4 |
| 23 | 026307 | ELBOW 90D STREET 3/4 | 1 |
| 24 | 062522 | STUD TH 1/4-20 X 3 G2 ZNC FULL | 1 |
| 25 | 022127 | NUT HEX 1/4-20 STEEL | 1 |
| 26 | 022259 | NUT HEX 5/16-18 STEEL | 2 |
| 27 | 050279 | DECAL FUEL INLET NG | 1 |
| 28 | 0A6125 | STUD 5/16-18 X 1.25 F THR | 2 |
| 29 | 0C2454 | SCREW TH-FRM M6-1X16 N WA Z/JS | 3 |
| 30* | 0E1104 | GASKET, AIR CLEANER ADAPTER | 1 |
| 31* | 0E0668 | O-RING 2-028 1.38 X 1.50 X .06 | 1 |
| 32* | 0E0590 | VENTURI 18MM | 1 |
| 33* | 0C5133 | O-RING 29.82 X 2.62 | 1 |
| 34* | 0E0665 | SCREW,THROTTLE PIN STOP | 1 |
| 35* | 0E1108 | THROTTLE ARM REWORK | 1 |
| 36* | 033138 | SCREW HHM #10-32 X 5/8 | 1 |
| 37* | 022152 | WASHER LOCK #10 | 1 |
| 38* | 0E0645 | LEVER,THROTTLE STOP | 1 |
| 39* | 044117 | BARBED STR 3/8NPT X 5/8 | 1 |
| 40 | 059194 | HOSE 5/8 ID LPG & NG (20"LG) | 1 |
| 41 | 057823 | CLAMP HOSE #10 .56 - 1.06 | 2 |
| 42 | 0F0382 | HOSE 3/8" 90DEG 2.5L PVC | 1 |

* INCLUDED IN ITEM 19 (CARBURETOR ASY.)

