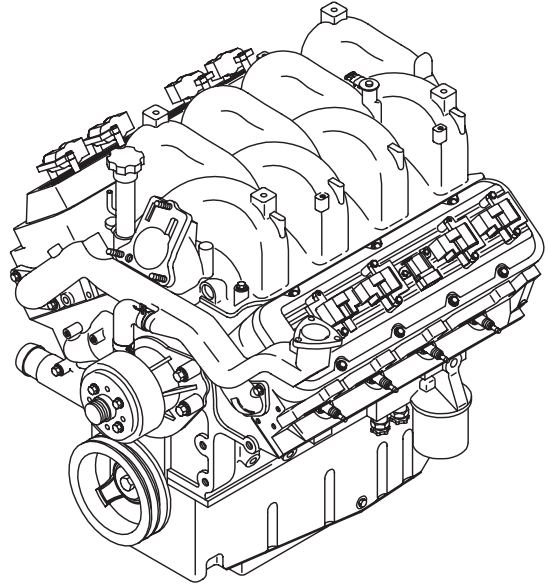


OE7949

GENERAC[®]
POWER SYSTEMS, INC.



8.1 LITER

G A S

GM
ENGINE
PARTS
MANUAL

8.1L GAS TABLE OF CONTENTS

QUICK REFERENCE GUIDE 2
SERVICE RECOMMENDATIONS 3
ENGINE LOWER 8
ENGINE UPPER 12
ENGINE COMMON PARTS:
 LEFT HAND SIDE (DIRECT DRIVE UNITS) 16
 LEFT HAND SIDE (DIRECT DRIVE UNITS W/TURBO) 18
 RIGHT HAND SIDE (DIRECT DRIVE UNITS) 22

LEGEND

- “AR” AS REQUIRED**
- “STD” STANDARD SIZE**
- “O.S.” OVERSIZE**
- “U.S.” UNDERSIZE**
- “NA” NOT AVAILABLE**

NOTICE!

THE INFORMATION IN THIS MANUAL IS KNOWN TO BE ACCURATE AS OF THE DATE OF RELEASE SHOWN ON THE COVER. HOWEVER, ENGINEERING CHANGES CAN OCCUR WITHOUT NOTICE. TO OBTAIN THE PROPER PARTS, PLEASE BE SURE TO USE THE MODEL NUMBER OF THE UNIT BEING SERVICED WHEN ORDERING FROM THIS MANUAL.

8.1L GAS QUICK REFERENCE GUIDE

QUICK REFERENCE ENGINE PARTS

PART NUMBER	DESCRIPTION	QTY
0C81660135	OIL FILTER	1
0A4278C	BELT, SERPENTINE	1
0C81660212	SPARK PLUG	8
0E0307	SPARK PLUG WIRE SET	1
0D2244M	MAGNETIC PICKUP ASSEMBLY	1
059056A	STARTER	1
058385A	STARTER BOLT	2
0C81660163	THERMOSTAT	1
0C6960	THERMOSTAT GASKET	1
0C81660122	PUMP KIT, WATER W/GASKET	1
0D5420	AIR FILTER (NOT SHOWN)	1

8.1L GAS SERVICE RECOMMENDATIONS

◆ ENGINE OIL RECOMMENDATIONS

The unit has been filled with “break in” engine oil at the factory. Use a high-quality detergent oil classified “For Service CC, SD, SE or SF.” Detergent oils keep the engine cleaner and reduce carbon deposits. Use oil having the following SAE viscosity rating, based on the ambient temperature range anticipated before the next oil change:

Engine Lubrication System:

Crankcase Oil Capacity7.6 L (8.0 U.S. qts.)

Temperature	Oil Grade (Recommended)
Above 80° F (27° C)	SAE 30W or 15W-40
30° to 80° F (-1° to 27° C)	SAE 20W-20 or 15W-40
Below 32° F (0° C)	SAE 10W or 15W-40

◆ COOLANT

Use a mixture of half low silicate, ethylene glycol base antifreeze and half soft water. Use only soft water and only low silicate antifreeze. If desired, you may add a high quality rust inhibitor to the recommended coolant mixture. When adding coolant, always add the recommended 50-50 mixture.

Cooling System:

Coolant Capacity

System20 L (5.3 U.S. gals.)

Engine8 L (2.1 U.S. gals.)

—▲ DANGER ▲—

- ▲ Do not remove the radiator pressure cap while the engine is hot or serious burns from boiling liquid or steam could result.
- ▲ Ethylene glycol base antifreeze is poisonous. Do not use your mouth to siphon coolant from the radiator, recovery bottle or any container. Wash your hands thoroughly after handling. Never store used antifreeze in an open container because animals are attracted to the smell and taste of antifreeze even though it is poisonous to them.

—▲ CAUTION ▲—

- ▲ Do not use any chromate base rust inhibitor with ethylene glycol base antifreeze, or chromium hydroxide (“green slime”) will form and cause overheating. Engines that have been operated with a chromate base rust inhibitor must be chemically cleaned before adding ethylene glycol base antifreeze. Using any high silicate antifreeze boosters or additives also will cause overheating. We also recommend that you DO NOT use any soluble oil inhibitor for this equipment.

8.1L GAS SERVICE RECOMMENDATIONS

35 KW - 200 KW STANDBY GAS ENGINE DRIVEN GENERATOR SETS

Following is a recommended maintenance schedule for Generac standby gas engine driven generator sets from 35 kW to 200 kW in size. The established intervals in the schedule are the *maximum* recommended when the unit is used in an average service application. They will need to be decreased (performed more frequently) if the unit is used in a severe application. Use the unit hour meter or calendar time, whichever occurs first, from the previous maintenance interval to determine the next required maintenance interval.

Service Maintenance Interval Information:

The various service maintenance intervals are designated by interval numbers as follows:

- 1 An early inspection of the generator set to insure it is ready to operate when required and to identify any potential problem areas.

Performed monthly or following each 10 hours of operation of the unit and requires approximately .5 man-hours per unit to complete.

This inspection may be performed by the end user providing the following safety steps are taken to prevent the engine from starting automatically without warning:

To prevent injury, perform the following steps in the order indicated before starting any maintenance:

- **Disable the generator set from starting and/or connecting to the load by setting the control panel Auto-Off-Manual switch to the "OFF" position.**
- **Remove the control panel fuse.**
- **Turn off the battery charger.**
- **Remove the negative battery cable.**

The battery charger must be turned off BEFORE removing the battery cable to prevent an over current condition from burning out sensitive control panel components and circuits.

Following all maintenance, reverse these steps to insure the unit is returned to standby setup for normal operation when required.

- 2 A break-in service inspection of the generator set to insure it is ready to operate and carry the load when required, and to identify any potential problem areas.

*Performed **ONLY ONCE** following the first three months or the first 30 hours of operation after purchase of the unit and requires approximately 2.5 man-hours per unit to complete.*

This inspection contains some maintenance tasks which require special tools, equipment, and/or knowledge to accomplish and should be performed only by an authorized Generac Service Dealer.

- 3 An operational inspection of the generator set to insure it is ready to operate and carry the load when required, and to identify any potential problem areas.

Performed semi-annually or following each 50 hours of operation of the unit and requires approximately 1.5 man-hours per unit to complete.

This inspection contains some maintenance tasks which require special tools, equipment, and/or knowledge to accomplish and should be performed only by an authorized Generac Service Dealer.

- 4 A mid-level inspection of the generator set to insure it is ready to operate and carry the load when required, and to identify any potential problem areas.

Performed annually or following each 100 hours of operation of the unit and requires approximately 5.0 man-hours per unit to complete.

This inspection contains some maintenance tasks which require special tools, equipment, and/or knowledge to accomplish and should be performed only by an authorized Generac Service Dealer.

NOTE: Add 20% to all times for 8 cylinder or larger engines.

GENERAC POWER SYSTEMS, INC.

RECOMMENDED SCHEDULED MAINTENANCE PROGRAM SERVICE WORK TO BE PERFORMED BY FACTORY-TRAINED PERSONNEL ONLY.

DEALER INFORMATION

NAME: _____
ACCOUNT #: _____
ADDRESS: _____

PHONE: _____
TECHNICIAN: _____
SIGNATURE: _____

OWNER INFORMATION

NAME: _____
ADDRESS: _____

SITE: _____
PHONE: _____
SIGNATURE: _____

PURCHASE DATE: _____ START-UP DATE: _____

APPLICATION: _____ Standby Power _____ Prime Power _____ Rental/Trailerized

GENERATOR & TRANSFER SWITCH INFORMATION

GENERATOR

MODEL NUMBER: _____
SERIAL NUMBER: _____

TRANSFER SWITCH

MODEL NUMBER: _____
SERIAL NUMBER: _____

HOUR METER READING *at Completion of the Inspection*: _____

WARNING!

To prevent injury, perform the following steps in the order indicated before starting any maintenance:

- Disable the generator set from starting and/or connecting to the load by setting the control panel Auto-Off-Manual switch to the "OFF" position.
- Remove the control panel fuse.
- Turn off the battery charger.
- Remove the negative battery cable.

NOTE:

The battery charger must be turned off BEFORE removing the battery cable to prevent an over current condition from burning out sensitive control panel components and circuits.

Following all maintenance, reverse these steps to insure the unit is returned to standby setup for normal operation when required.

8.1L GAS SERVICE RECOMMENDATIONS

Maintenance Tasks	Level 1	Task Comp. (Date-Initials)	Level 2	Task Comp. (Date-Initials)	Level 3	Task Comp. (Date-Initials)	Level 4	Task Comp. (Date-Initials)
	Recommended to be done monthly/ 10 hrs.		Required to be done 3 months/ Break-in 30 hrs.		Required to be done Semi-annually/ 50 hrs.		Required to be done Annually/ 100 hrs.	
1. Disable the unit from operating per the first page warning.	○		○		○		○	
2. Check the engine oil level. Adjust as necessary.	○		○		○		○	
3. Check the engine coolant level. Adjust as necessary.	○		○		○		○	
4. Check the engine coolant thermal protection level. Correct as necessary.							○	
5. Check the natural gas delivery system. Tighten connections as necessary.			○		○		○	
6. Check the air inlets and outlets for debris. Clean as necessary.	○		○		○		○	
7. Check the battery electrolyte level if accessible. Adjust as necessary.	○		○		○		○	
8. Check the battery posts, cables, and charger for loose connections, corrosion, and proper operation. Correct as necessary.	○		○		○		○	
9. Check the unit wiring for loose connections, corrosion, and damage. Correct as necessary.							○	
10. Check the engine accessory drive belts for wear, weather cracking and damage. Replace as necessary.							○	
11. Visually inspect the unit looking for leaks, wear or damage, loose connections or components, and corrosion. Correct as necessary.	○		○		○		○	
12. Test the engine and transfer switch safety devices. Correct and/or adjust as necessary.							○	

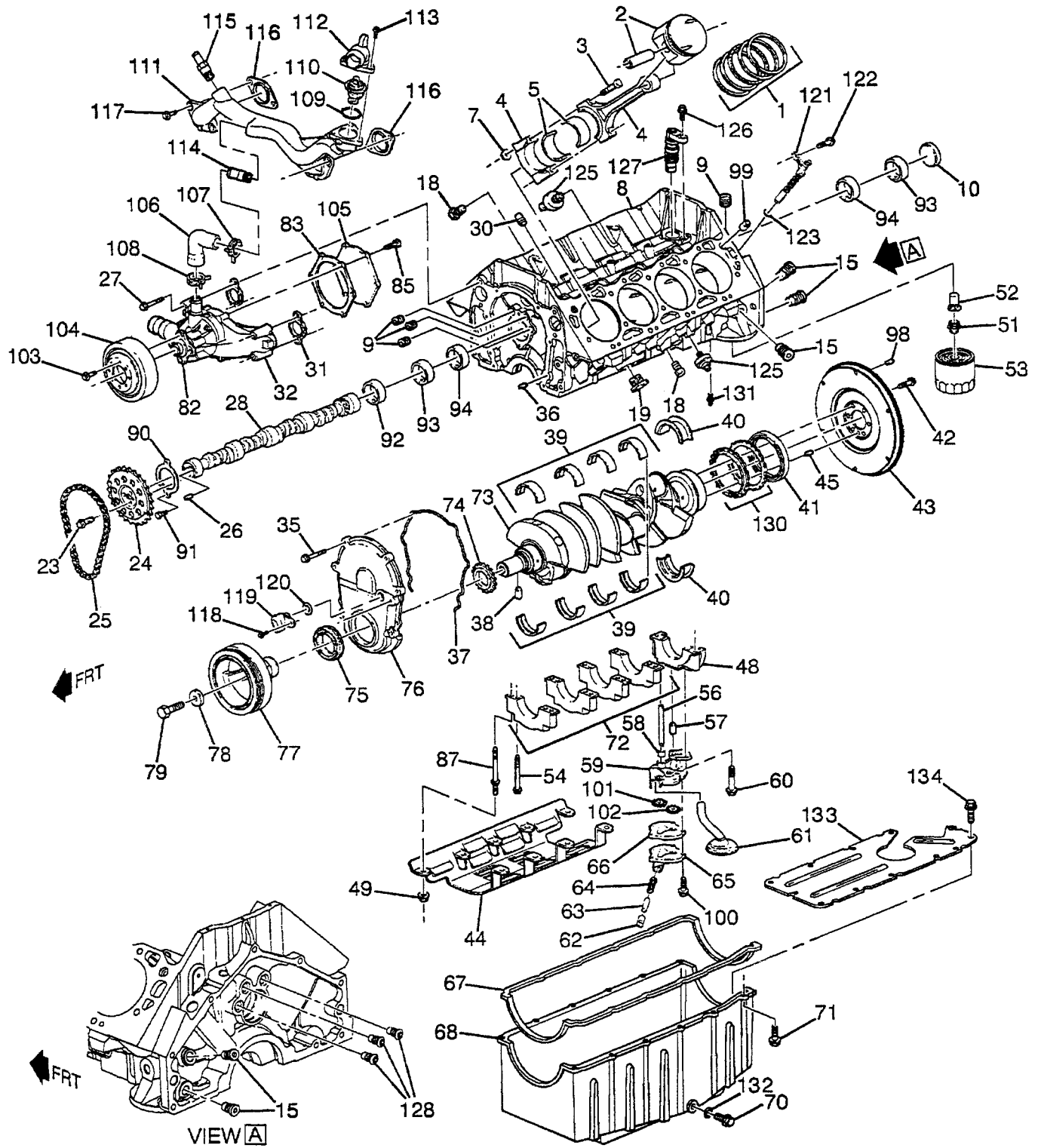
8.1L GAS SERVICE RECOMMENDATIONS

Maintenance Tasks	Level 1 Recom- mended to be done monthly/ 10 hrs.	Task Comp. (Date- Initials)	Level 2 Required to be done 3 months/ Break-in 30 hrs.	Task Comp. (Date- Initials)	Level 3 Required to be done Semi- annually/ 50 hrs.	Task Comp. (Date- Initials)	Level 4 Required to be done Annually/ 100 hrs.	Task Comp. (Date- Initials)
13. Initiate an automatic start and transfer of the unit to site load and exercise it for at least 1 hour looking for leaks, loose connections or components, and abnormal operating conditions. Correct as necessary.			●		●			
14. Start and exercise the unit at full rated load (use a load bank if the site load is not enough) for at least 2 hours looking for leaks, loose connections or components, and abnormal operating conditions. Correct as necessary.							●	
15. Change the engine oil.			●				●	
16. Replace the engine oil filter(s).			●				●	
17. Replace the engine air filter(s).							●	
18. Check the engine spark plugs. Clean and re-gap or replace as necessary.			●				●	
19. Perform a 5 minute no-load operational run of the unit looking for any post service problems.			●				●	
20. Return the unit to standby setup for operation when required.	●		●		●		●	

8.1L GAS ENGINE LOWER

ITEM	PART NUMBER	DESCRIPTION	QTY
1	0C81660100	RING KIT, PISTON, STD	8
1	0C81660101	RING KIT, PISTON, O.S. 0.030"	AR
2	0C81660102	PISTON(W/CONN ROD), LH (INCLDS 1,2,3,4,7)	4
2	0C81660103	PISTON (W/CONN ROD) RH (INCLDS 1,2,3,4,7)	4
2	0C81660104	PISTON (W/CONN ROD) LH O.S. 0.030"	AR
2	0C81660105	PISTON (W/CONN ROD) RH O.S. 0.030"	AR
3	0C81660106	BOLT, CONN ROD	16
4	—	CONN ROD (PART OF ITEM 2)	NA
5	0C81660107	BEARING KIT, CONN ROD	8
7	0C81660108	NUT, CONN ROD	16
9	0767850121	PLUG, ENG BLK OIL GAL	3
10	0767850112	PLUG, CM/SHF BRG HOLE	1
15	0767850111	PLUG, ENG BLK OIL GAL	3
18	0C81660111	PLUG, ENG BLK COOL DRN	2
19	0A37970221	PLUG, ENG BLK COOL DRN	1
23	0C81660113	BOLT, CM/SHF SPKT	3
24	0C81660114	SPROCKET, CM/SHF	1
25	07678850118	CHAIN, CM/SHF TIMING	1
26	0C81660115	PIN, CM/SHF SPKT LOC	1
27	0C81660116	BOLT, HFH M10X1.5X65	3
27	0C81660117	BOLT, HFH, M10X1.5X95	1
28	0C81660118	CAMSHAFT, ENG	1
29	0C81660120	SEALER, CM/SHF BRG HOLE	AR
30	0758720116	PLUG, ENG BLK OIL GAL	3
31	0C81660121	GASKET, WATER PUMP	2
32	0C81660122	PUMP KIT, WATER (INCL ITEMS 31,82,83,85,105)	1
35	0C81660123	BOLT, M6X1.0X30	6
36	0C81660180	PIN, 1/4 X 5/8	1
37	0C81660124	GASKET, ENG FRT COVER	1
38	0C81660125	PIN, CR/SHF BALR LOC	1
39	0C81660126	BEARING KIT, CR/SHF	4
40	0C81660127	BEARING KIT, CR/SHF THRUST	1
41	0C81660128	SEAL, CR/SHF RR OIL	1
42	0C81660129	BOLT, M11X1.5X29	6
43	0C81660130	FLYWHEEL, INCLS GR & LOC PIN	1
44	0C81660131	DEFLECTOR, CR/SHF OIL	1
45	0C81660132	PIN, M6X20	2
48	—	CAP	NA
49	0C81660133	NUT, (M10X1.5,11.7)	9
51	0887780124	FITTING, OIL FILTER	1
52	0C81660134	VALVE, OIL FILTER BYPASS	2
53	0C81660135	OIL FILTER	1
54	0C81660136	BOLT, M12X1.75X89	10
56	0767850136	SHAFT, OIL PUMP DRIVE	1
57	0C81660137	PIN, 1/4 X 5/8	1
58	0758720123	RETAINER, O/PMP DRV SHF	1
59	0C81660138	PUMP, OIL (W/SCRN)	1
60	0C81660139	BOLT, M10X1.5X60	1
61	—	SCREEN (PART OF OIL PUMP)	NA
62	0767850139	VALVE, OIL PRESSURE RELIEF	1
63	0C81660140	SPRING, OIL REESS RLF VLV	1
64	0758720140	PIN, OIL PRESS RLF VLV SPR ST	1
65	0C81660141	COVER, OIL PUMP	1
66	—	GASKET (NOT REQUIRED)	NA
67	0C81660142	GASKET, OIL PAN	1
68	0C81660143	PAN, OIL (INCL PAN, PLUG, GASKET)	1

8.1L GAS ENGINE LOWER



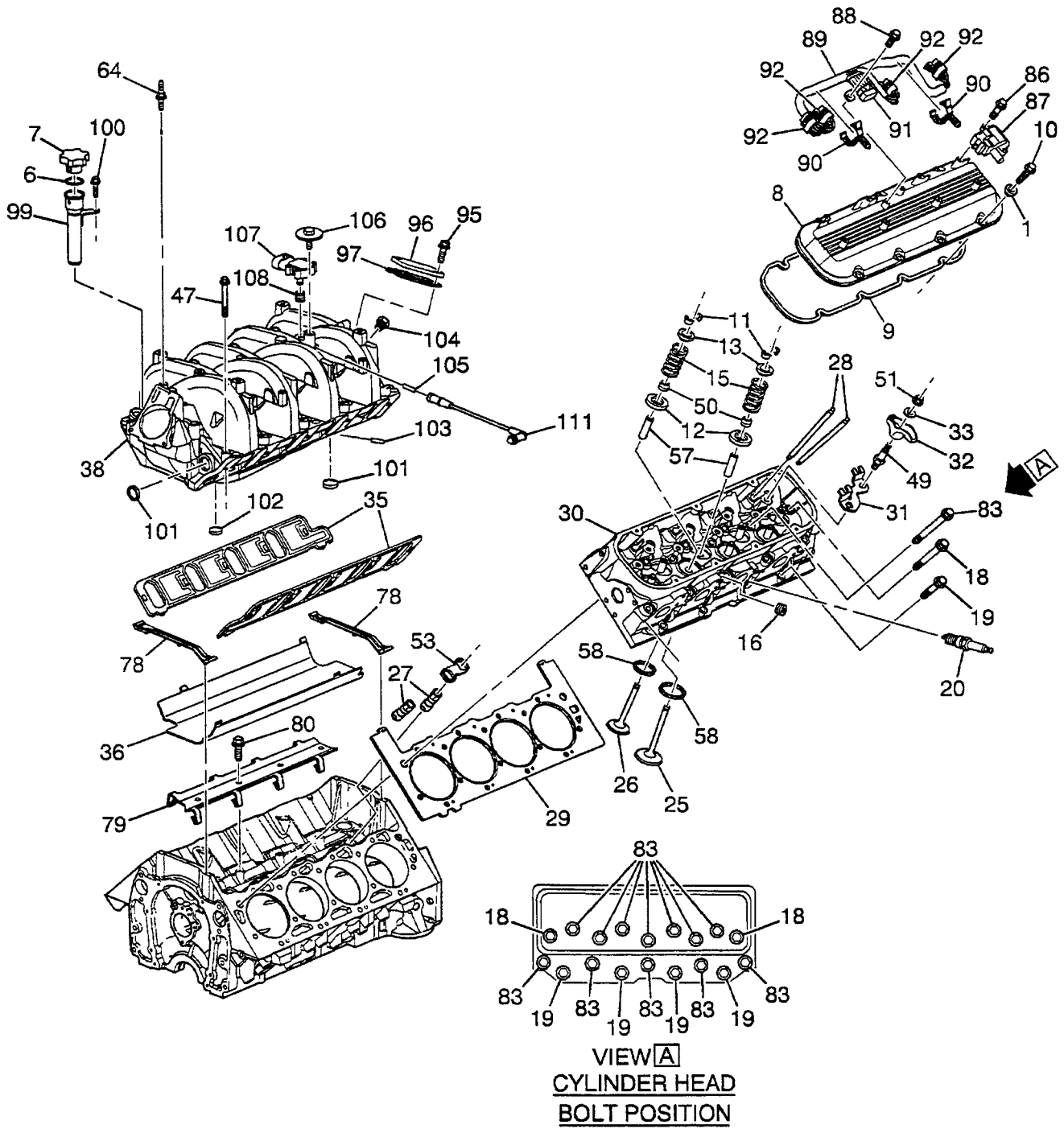
8.1L GAS ENGINE LOWER

ITEM	PART NUMBER	DESCRIPTION	QTY
70	0758720236	PLUG, OIL PAN DRN	2
70	0A37970218	PLUG, (W/MAGNET & SEAL)	1
71	—	BOLT, HFH M8X1.25X30)	NA
72	—	CAP	NA
73	0C81660144	CRANKSHAFT (CAST-IRON)	1
74	0C81660145	SPROCKET, CR/SHF	1
75	0C81660148	SEAL, CR/SHF FRT OIL	1
76	0C81660147	COVER, ENG FRT(INCL CVR,SEAL,GSKT)	1
77	0C81660146	BALANCER, CR/SHF	1
78	0C81660149	WASHER, CR/SHF BALANCER	1
79	0C81660150	BOLT, M16X1.5	1
82	—	HUB (PART OF ITEM 32)	NA
83	—	GASKET (PART OF ITEM 32)	NA
85	0C81660151	BOLT, WATER PUMP COVER	6
87	0C81660152	STUD, CR/SHF BRG CAP	10
90	0C81660153	RETAINER, CM/SHF	1
91	0C81660154	BOLT, CM/SHF RET	2
92	0767850114	BEARING, CM/SHF (POS #1)	1
93	0767850115	BEARING, CM/SHF (POS #2,5, RR)	2
94	0767850116	BEARING, CM/SHF (POS #3,4)	2
98	0C81660155	PIN, DOWEL, M6X20, PL	2
99	0C81660156	PIN, CYL HD LOC (1/2 X 5/8 O.D.)	4
100	0830340111	BOLT (HFH M6X1X20 9.8 PZOR)	5
101	—	GEAR (PART OF ITEM 59)	NA
102	—	GEAR (PART OF ITEM 59)	NA
103	0C81660157	BOLT (M8X1.25X20)	4
104	0C81660158	PULLEY, FAN & W/PUMP	1
105	—	COVER (PART OF ITEM 32)	NA
106	0C81660159	HOSE, THERM BYPASS (INCL CLAMPS)	1
107	0C81660160	CLAMP, THERM BYPASS HOSE (SILVER)	1
108	0C81660161	CLAMP, THERM BYPASS HOSE (GREEN)	1
109	0C81660162	SEAL, ENG COOL THERM (O-RING)	1
110	0C81660163	THERMOSTAT, ENG COOL	1
111	0C81660164	PIPE, ENG COOL C/OVR	1
112	0C81660165	OUTLET, WATER	1
113	0C81660166	BOLT, (8X1.25X25, 10.9) W/WASHER	3
114	—	PIPE (PART OF ITEM 111)	NA
115	0C81660167	FITTING, HTR HOSE	1
116	0C81660168	GASKET, ENG COOL C/OVR PIPE	2
117	0C81660169	BOLT, M10X1.5X30	4
118	0C81660170	BOLT, CM/SHF POSN SEN	1
119	0C81660171	SENSOR, CM/SHF POSN	1
120	—	SEAL (PART OF ITEM 119)	NA
121	0C81660172	SENSOR, CR/SHF POSN	1
122	0C81660173	BOLT, CR/SHF POSN SEN	1
123	—	SEAL (PART OF ITEM 121)	NA
125	0C81660174	SENSOR, KNOCK	2
126	0C81660175	BOLT, M8X1.25X20	4
127	0C81660176	DRIVE O/PUMP	1
128	0758720116	PLUG, ENG BLK OIL GAL	3
130	—	RING (PART OF ITEM 73)	NA
131	0C81660177	CONNECTOR, ENG OIL CLR HOSE	2
132	0A37970217	SEAL, OIL PAN DRN PLUG	1
133	0C81660178	BAFFLE, OIL PAN	1
134	0C81660179	BOLT, HWH M6X1X20	1

8.1L GAS ENGINE UPPER

ITEM	PART NUMBER	DESCRIPTION	QTY
1	0C81660200	GASKET VLV RKR ARM CVR	14
6	—	SEAL (PART OF ITEM 7)	NA
7	0C81660201	CAP, OIL FILL (INCL ITEM 6)	1
8	0E4506	COVER, VLV RKR ARM (INCL GASKET)	2
9	0C81660203	GASKET, VLV RKR ARM CVR	2
10	0C81660204	BOLT, M6X1.0X26	14
11	0767850164	KEY, VALVE STEM	32
12	0C81660205	ROTATOR, VALVE	16
13	0C81660206	CAP, VALVE SPRING	16
15	0C81660207	SPRING, VALVE	16
16	0C81660208	PLUG, CYL HD CORE HOLE	2
16	0C81660209	PLUG, CYL HD CORE HOLE	2
18	0C81660210	BOLT, HFH M10X1.5X86	4
19	0C81660211	BOLT, M10X1.5X52	8
20	0C81660212	SPARK PLUG	8
22	0C81660213	BOLT, HFH, 8X1.25X25	2
23	0C81660214	PIN, 1/2 X 5/8 O.D.	4
25	0C81660215	VALVE, INT (STD)	8
25	0C81660216	VALVE, INT (0.003 O.S.)	AR
25	0C81660217	VALVE, INT (0.015 O.S.)	AR
25	0C81660218	VALVE, INT (0.030 O.S.)	AR
26	0C81660219	VALVE, EXH (STD)	8
26	0C81660220	VALVE, EXH (0.003 O.S.)	AR
26	0C81660221	VALVE, EXH (0.015 O.S.)	AR
26	0C81660222	VALVE, EXH (0.030 O.S.)	AR
27	0C81660223	LIFTER, VALVE	16
28	0C81660224	ROD, VLV PUSH INTAKE	8
28	0C81660225	ROD, VLV PUSH EXHAUST	8
29	0C81660226	GASKET, CYL HEAD LH	1
29	0C81660227	GASKET, CYL HEAD RH	1
30	0C81660228	HEAD, CYL RH (INCL SEATS, GUIDES)	1
30	0C81660229	HEAD, CYL LH (INCL SEATS, GUIDES)	1
31	0C81660230	GUIDE, VLV LFTR PUSH ROD	8
32	0C81660231	ARM, VLV ROCKER	16
33	0C81660232	BALL, VLV RKR ARM	16
35	—	GASKET INT MNFLD (PART OF ITEM 113)	NA
36	0C81660233	SHIELD, INT MANF OIL SPH	1
38	0C81660234	MANIFOLD, INT	1
47	0C81660235	BOLT, M6 X 1.0 X 65	10
49	0C81660236	STUD, VLV RKR ARM PIV	16
50	0C81660237	SEAL, VALVE STEM OIL	16
51	0C81660238	NUT, VALVE ROCKER ARM	12
53	0C81660239	GUIDE, VALVE LIFTER	8
57	—	GUIDE (PART OF 30)	NA
58	—	SEAT (PART OF 30)	NA
64	0C81660240	STUD, HFH, M6X1X13	2
78	—	GASKET (INCLUDED IN ITEM 113)	NA
79	0C81660241	RETAINER, VLV LFTR GUIDE	1
80	0C81660242	BOLT, 8X1.25X25, 10,9 (W/WASHER)	7
83	0C81660243	BOLT, M10X1.5X103,20	24
86	0C81660244	BOLT, M6X1X24.5	16
87	0C81660245	COIL, INGNITION	8
88	0C81660246	BOLT, M6X1X13, 10 THD, 12.5 OD	4

8.1L GAS ENGINE UPPER

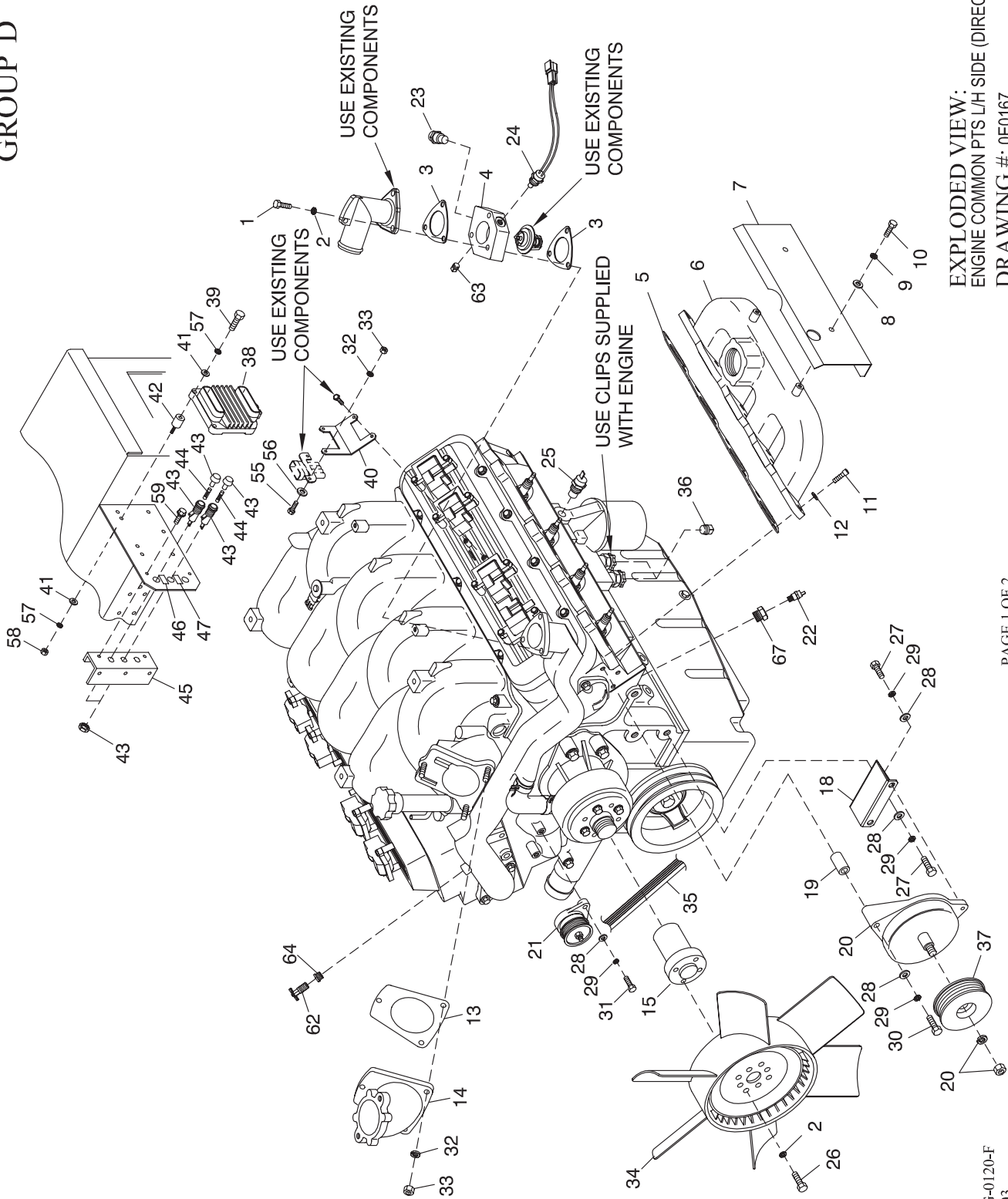


8.1L GAS ENGINE UPPER

ITEM	PART NUMBER	DESCRIPTION	QTY
89	0C81660247	HARNESS, IGN COIL WIRING	1
90	0C81660248	CLIP, WIRING HARNESS	1
91	0C81660249	CONNECTOR, INLINE-TO ENG HARNESS	1
92	0C81660250	CONNECTOR, COIL IGN	4
95	0C81660251	BOLT, HFH M8X1.25X30	1
96	0C81660252	COVER, EGR VLV OPG	1
97	0C81660253	GASKET, EGR VLV PIPE	1
99	0C81660254	TUBE, OIL FIL (*1) INCL SEAL	1
100	0C81660255	BOLT, M6X1X20	1
101	0C81660256	PLUG, INT MANIF CORE HOLE	2
102	0C81660257	PLUG, INT MANIF CORE HOLE	1
103	—	TUBE PCV	NA
104	0C81660258	PLUG, INT MANIF CORE HOLE	1
105	—	TUBE INT MANIF	NA
106	0C81660259	BOLT, M6X1X20	3
107	0C81660260	SENSOR, MAP	1
108	0C81660261	SEAL, MAP SEN	1
111	0C81660262	HOSE, FUEL PRESS REG VAC	1
113	0C81660263	GASKET KIT, INT MANIF (NOT SHOWN)	1

8.1L GAS ENGINE COMMON PARTS LH SIDE (DIRECT DRIVE UNITS)

GROUP D



EXPLODED VIEW:
ENGINE COMMON PTS LH SIDE (DIRECT DRIVE)
DRAWING #: 0E0167

PAGE 1 OF 2

REVISION: G-0120-F
DATE: 6/17/03

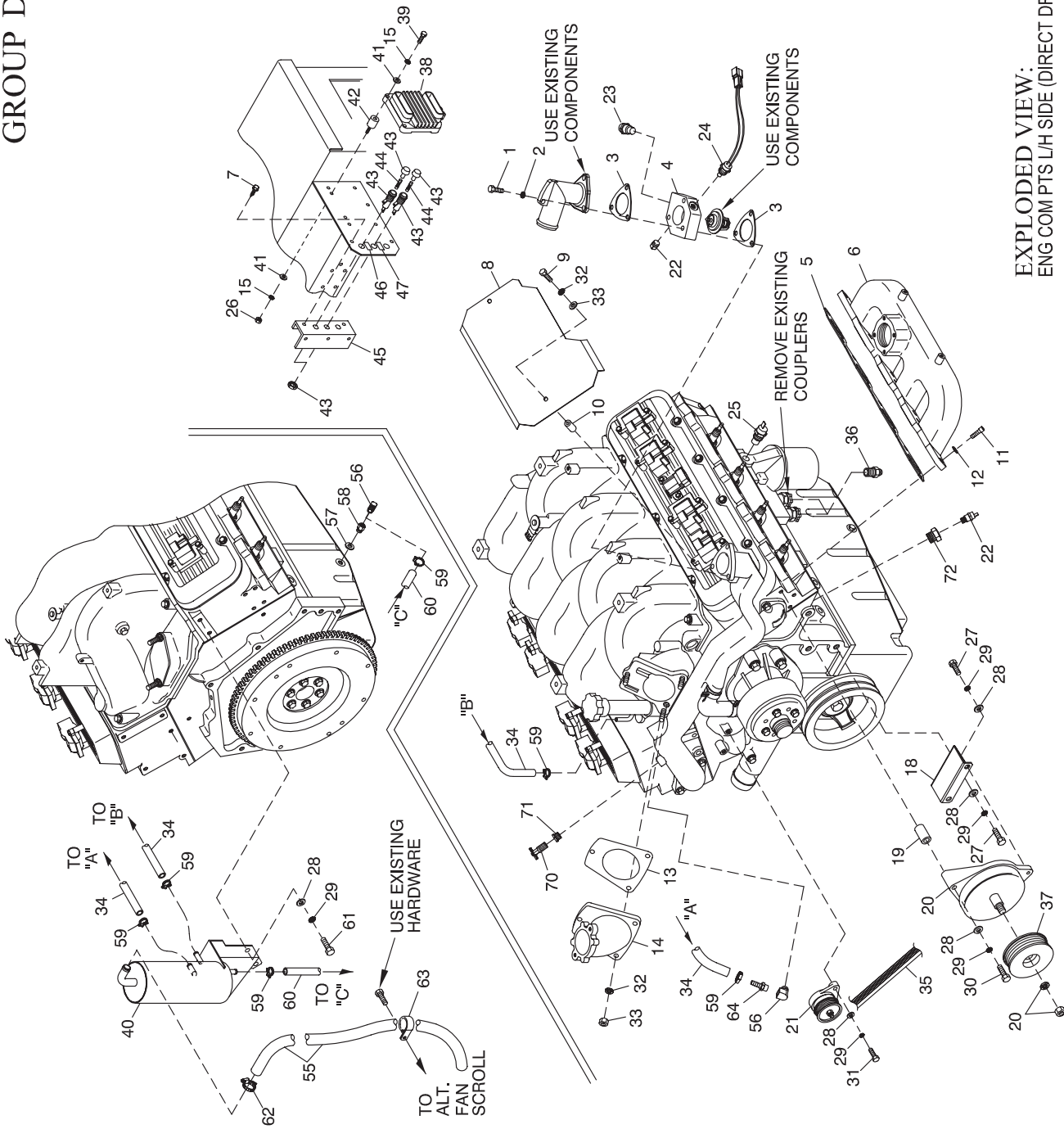
8.1L GAS ENGINE COMMON PARTS LH SIDE (DIRECT DRIVE UNITS)

ITEM	PART NUMBER	DESCRIPTION	QTY
1	051730	SCREW HHC M8-1.25 X 60 G8.8	3
2	022129	WASHER LOCK M8-5/16	7
3	0C6960	GASKET, THERM 3LHA	2
4	0C9908	ADAPTOR THERMOSTAT ADAPTOR	1
5	055466	GASKET-EXH MANIFOLD	2
6	021030A	MANIFOLD - EXH MACH.	2
7	0A6538	HEAT SHIELD EXH 7.4L	2
8	070008	WASHER FLAT M8 SS	4
9	070006	WASHER LOCK M8 SS	4
10	0D2608	SCREW HHC 5/16-18 X 1/2 SS	4
11	058306	SCREW SHC M8-1.25 X 25 G12.9	16
12	085917	WASHER LOCK 3/8 SS	16
13	0C9786	GASKET-MANIFOLD INTAKE	1
14	0C9548	ADAPTER THROTTLE BODY 8.1L	1
15	0D1085	SPACER-FAN ENGINE 8.1L	1
16	0E2010	HARNNESS 8.1L GM IGNITION (NOT SHOWN)	1
17	0E1815	HARNNESS 8.1L GM ENGINE (E-PNL) (NOT SHOWN)	1
	0E1815A	HARNNESS 8.1L GM ENGINE (C-PNL) (NOT SHOWN)	1
18	0C9990	BRKT D.C. ALTERNATOR 8.1L GM	1
19	0A5737B	SPACER DC ALT. 25LG	1
20	0A1232	D.C. ALTERNATOR ASSY	1
21	0D2031	TENSIONER PULLEY	1
22	053667	SENDER WATER TEMP	1
23	035606	SENSOR HI COOLANT SHUTDOWN	1
24	0E0561	ASSY WATER LEVEL SENSOR	1
25	0A8584	SWITCH OIL PRESSURE HOBBS (C-PANEL ONLY)	1
26	022142	SCREW HHC 5/16-18 X 3/4 G5	4
27	049814	SCREW HHC M10-1.5 X 25 G8.8	3
28	022131	WASHER FLAT 3/8-M10 ZINC	6
29	046526	WASHER LOCK M10	6
30	056768	SCREW HHC M10-1.5 X 90 G8.8	1
31	064416	SCREW HHC M10-1.5 X 45 G8.8	2
32	022097	WASHER LOCK M6-1/4	7
33	049813	NUT HEX M6 X 1.0 G8 YEL CHR	7
34	0D3293A	FAN COOLING 22" DIA KYSOR	1
35	0A4278C	BELT SERPENTINE 71.5" LG	1
36	049651	PLUG STD PIPE 1/2	2
37	0A7801B	PULLEY POLY-V 82 OD.	1
38	0E4149	IGN CON (MEFI-4) 8.1GM D/D PGM	1
39	036935	SCREW PPHM #10-32 X 3/4	3
40	0E4755	BRKT, IGNITION COIL CONNECTOR	2
41	023897	WASHER FLAT #10 ZINC	6
42	034125	VIB MNT .5 X .62 X #10-32	3
43	032300	HOLDER FUSE	2
44	022676	FUSE 15A X AGC15	2
45	0D8614	COVER FUSE PANEL	1
46	0E2618	DECAL BATTERY 15AMP	1
47	0E2618A	DECAL IGNITION 15 AMP	1
48	0536210241	ASSEMBLY #0 WIRE (10.0" LG) (NOT SHOWN)	1
49	0536210242	ASSEMBLY #13 WIRE (10.0" LG) (NOT SHOWN)	1
50	0536210243	ASSEMBLY #14 WIRE (10.0" LG) (NOT SHOWN)	1
51	0C3211G	SOCKET RELAY 8 PIN (NOT SHOWN)	1
52	0C3211E	RELAY PNL 12VDC DPDT 8PIN (NOT SHOWN)	1
53	0C3211H	SPRING RELAY RETAINING (NOT SHOWN)	2
54	056739	RELAY SOLENOID 12VDC PNL MNT (NOT SHOWN)	1
55	043116	SCREW HHC M6-1.0 X 12 G8.8	4
56	022473	WASHER FLAT 1/4-M6 ZINC	4
57	022152	WASHER LOCK #10	6
58	022158	NUT HEX #10-32 STEEL	3
59	074908	SCREW HHTT M5-0.8 X 10 BP	2
60*	086292	SCREW DRILLTITE #10-16 X 1/4 (USED TO HOLD HARNESS TO FAN SCROLL)	1
61*	055934V	CLAMP VINYL 1.5 X .281 Z (USED TO HOLD HARNESS TO FAN SCROLL)	1
62	036865	DRAINCOCK	1
63	061012	PLUG STD PIPE 1/8 SOCKET HEAD	1
64	044856	BUSHING REDUCER 1/2 TO 1/8	1
65*	077043A	CONDUIT FLEX .38 ID (6"LG) (TO COVER WIRES ON I/N 38)	1
66*	055934B	CLAMP VINYL 1 X .281 Z (USED TO HOLD HARNESS TO FAN SCROLL)	1
67	0E7093	ADAPTER, M28-1.25 X 1/8"NPT	1

*NOT SHOWN

8.1L GAS ENGINE COMMON PARTS LH SIDE (DIRECT DRIVE UNITS W/TURBO)

GROUP D



EXPLODED VIEW:
 ENG COM PTS LH SIDE (DIRECT DRIVE-TURBO)
 DRAWING #: 0E5330

PAGE 1 OF 2

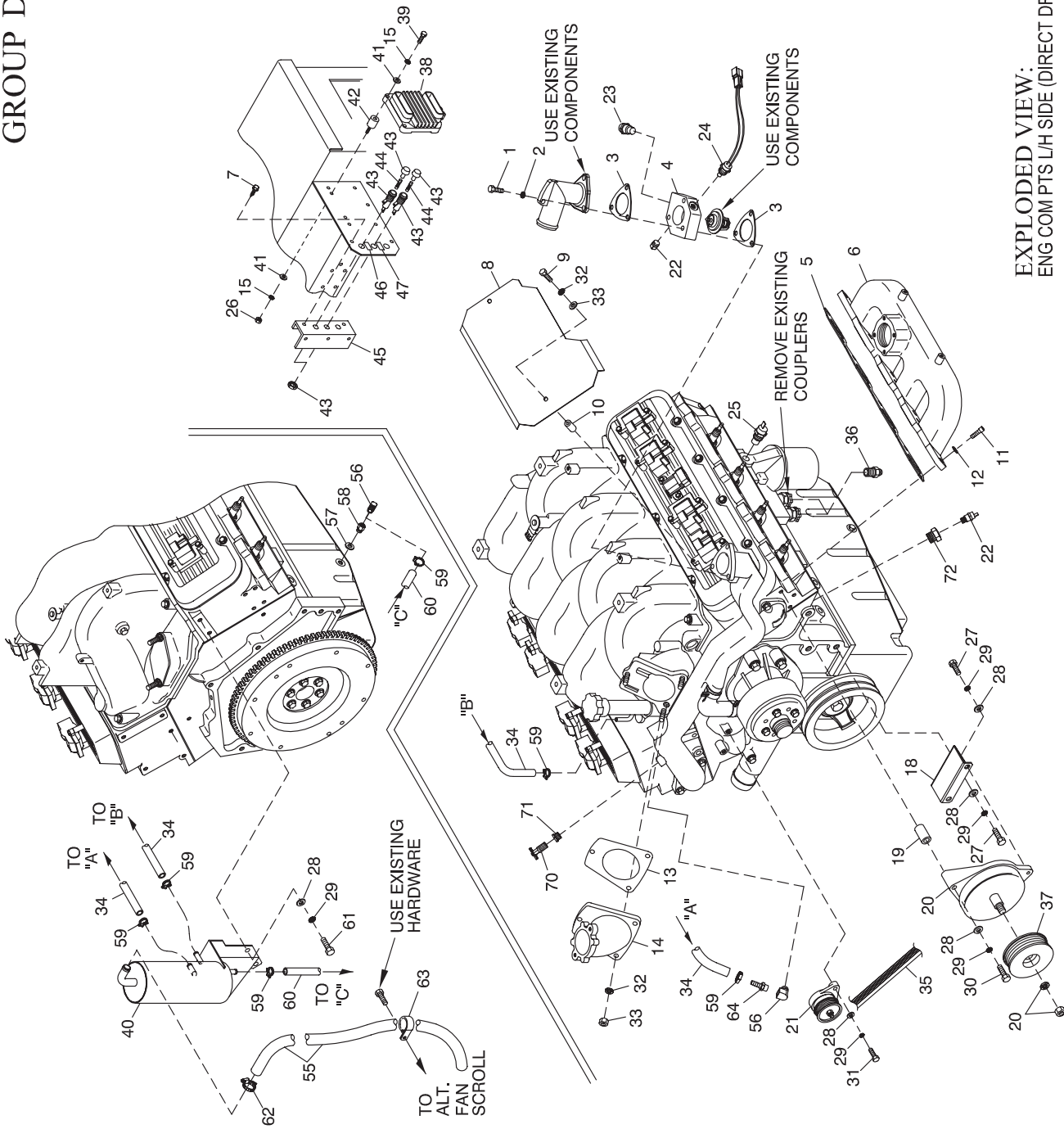
REVISION: G-0120-B
 DATE: 6/17/03

8.1L GAS ENGINE COMMON PARTS LH (DIRECT DRIVE UNITS W/TURBO)

ITEM	PART NUMBER	DESCRIPTION	QTY
1	051730	SCREW HHC M8-1.25 X 60 G8.8	3
2	022129	WASHER LOCK M8-5/16	3
3	0C6960	GASKET, THERM 3LHA	2
4	0C9908	ADAPTOR THERMOSTAT ADAPTOR	1
5	055466	GASKET-EXH MANIFOLD	2
6	021030C	MANIFOLD EXH. MACHND	2
7	074908	SCREW HHTT M5-0.8 X 10 BP	2
8	0E3097	HEAT SHIELD, IGNITION COILS	2
9	055816	SCREW HHC M6-1.0 X 70 G8.8	4
10	050184	SPACER .31 X .75 X 1.69 ST/ZNC	4
11	058306	SCREW SHC M8-1.25 X 25 G12.9	16
12	085917	WASHER LOCK 3/8 SS	16
13	0C9786	GASKET-MANIFOLD INTAKE	1
14	0C9548A	ADAPTOR, THROTTLE BODY (BOSCH)	1
15	022152	WASHER LOCK #10	6
16	0E2010	HARNES 8.1L GM IGNITION (D/D TURBO) (NOT SHOWN)	1
	0E2010A	HARN,IGNITION 8.1L GM (G/B TURBO) (NOT SHOWN)	1
17	0E4311	HARNES, ENGINE 8.1L GM(E-PNL) (D/D) (NOT SHOWN)	1
	0E4311A	HARNES,ENGINE 8.1L GM (C-PNL) (D/D) (NOT SHOWN)	1
	0E4311B	HARNES,ENGINE 8.1L GM (E-PNL) (G/B) (NOT SHOWN)	1
	0E4311C	HARNES,ENGINE 8.1L GM (C-PNL) (G/B) (NOT SHOWN)	1
18	0C9990	BRKT D.C. ALTERNATOR 8.1L GM	1
19	0A5737B	SPACER DC ALT. 25LG	1
20	0A1232	D.C. ALTERNATOR ASSY	1
21	0D2031	TENSIONER PULLEY	1
22	053667	SENDER WATER TEMP	1
23	035606	SENSOR HI COOLANT SHUTDOWN	1
24	0E0561	ASSY WATER LEVEL SENSOR	1
25	0A8584	SWITCH OIL PRESSURE HOBBS (C-PANEL ONLY)	1
26	022158	NUT HEX #10-32 STEEL	3
27	049814	SCREW HHC M10-1.5 X 25 G8.8	3
28	022131	WASHER FLAT 3/8-M10 ZINC	8
29	046526	WASHER LOCK M10	8
30	056768	SCREW HHC M10-1.5 X 90 G8.8	1
31	064416	SCREW HHC M10-1.5 X 45 G8.8	2
32	022097	WASHER LOCK M6-1/4	7
33	022473	WASHER FLAT 1/4-M6 ZINC	7
34	0E5353	HOSE,90DEG PREFORMED 3/8" I.D.	2
35	0A4278C	BELT SERPENTINE 71.5" LG (D/D TURBO)	1
	0A4278D	BELT, SERPENTINE 75.0" LG (G/B TURBO)	1
36	0C4975	MALE CONNECTOR	2
37	0A7801B	PULLEY POLY-V 82 OD. (D/D TURBO)	1
	0A7801A	PULLEY POLY-V 134 OD (G/B TURBO)	1
38	0E4149B	IGN CON (MWFI-4) 8.1GM (D/D TURBO)	1
	0E4149C	IGN CON (MEF1-4) 8.1GM (G/B TURBO)	1
39	036935	SCREW PPHM #10-32 X 3/4	3
40	0E5355	ASSY, AIR/OIL SEPERATOR	1
41	023897	WASHER FLAT #10 ZINC	6
42	034125	VIB MNT .5 X .62 X #10-32	3
43	032300	HOLDER FUSE	2
44	022676	FUSE 15A X AGC15	2
45	0D8614	COVER FUSE PANEL	1
46	0E2618	DECAL BATTERY 15AMP	1
47	0E2618A	DECAL IGNITION 15 AMP	1
48	0536210241	ASSEMBLY #0 WIRE (10.0" LG) (NOT SHOWN)	1
49	0536210242	ASSEMBLY #13 WIRE (10.0" LG) (NOT SHOWN)	1
50	0536210243	ASSEMBLY #14 WIRE (10.0" LG) (NOT SHOWN)	1
51	0C3211G	SOCKET RELAY 8 PIN (NOT SHOWN)	1
52	0C3211E	RELAY PNL 12VDC DPDT 8PIN (NOT SHOWN)	1
53	0C3211H	SPRING RELAY RETAINING (NOT SHOWN)	2
54	056739	RELAY SOLENOID 12VDC PNL MNT (NOT SHOWN)	1
55	0E5362	HOSE,90DEG PREFORMED 3/4" I.D.	1
56	046964	BRASS ST EL 1/4 NPT	1
57	052677	FW NYLON .50/.87/.06	1

8.1L GAS ENGINE COMMON PARTS LH SIDE (DIRECT DRIVE UNITS W/TURBO) CONT'D

GROUP D



**EXPLODED VIEW:
ENG COM PTS LH SIDE (DIRECT DRIVE-TURBO)
DRAWING #: 0E5330**

PAGE 1 OF 2

REVISION: G-0120-B
DATE: 6/17/03

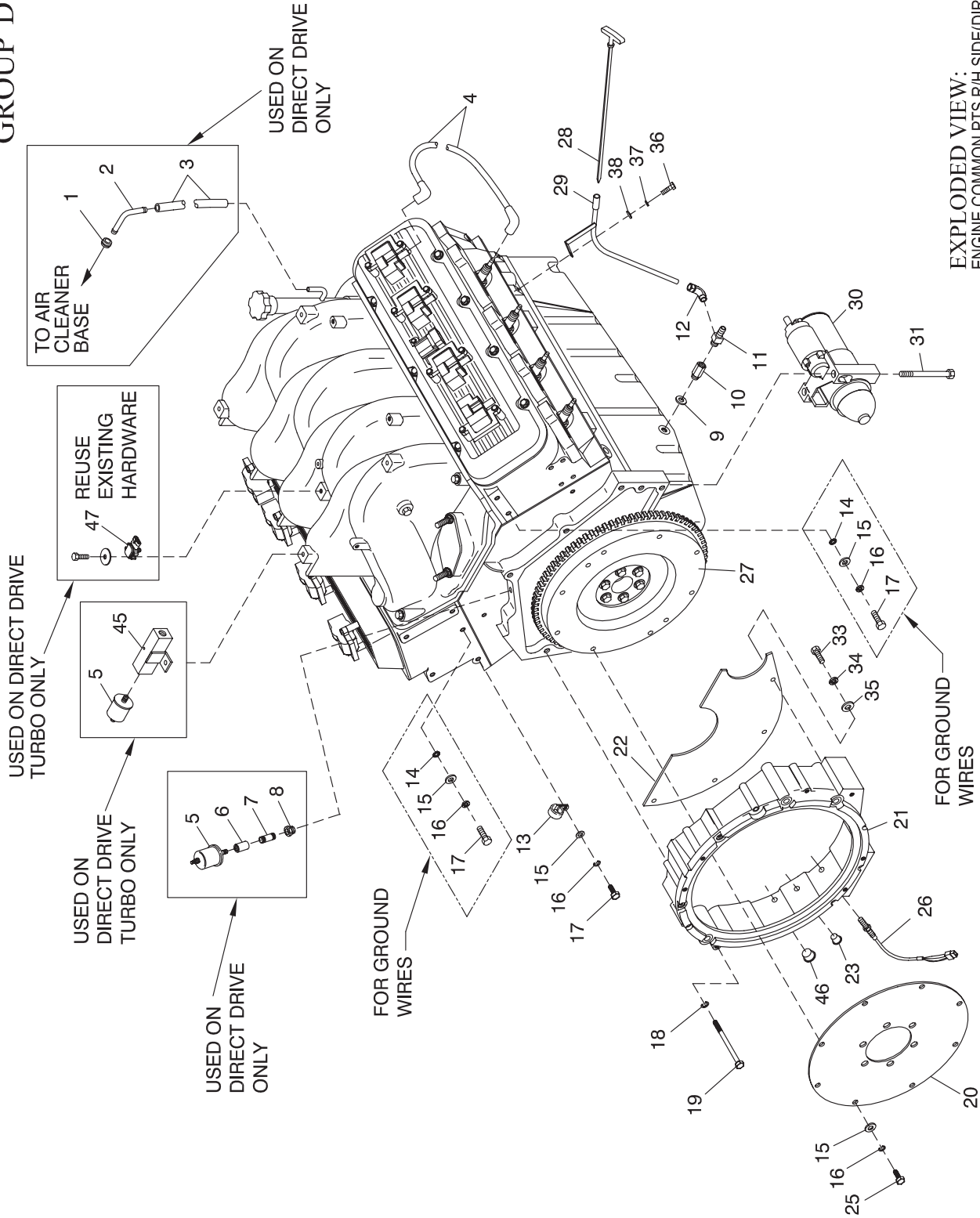
8.1L GAS ENGINE COMMON PARTS LH (DIRECT DRIVE UNITS W/TURBO) CONT'D

ITEM	PART NUMBER	DESCRIPTION	QTY
58	077456	ADPTR,M12-1.75 3/8NP	1
59	040173	CLAMP HOSE #5.5 .62-.62	6
60	047290	HOSE 3/8 ID SINGLE BRAID (30"LG)	1
61	051755	SCREW HHC M10-1.5 X 16 G8.8	2
62	057822	CLAMP HOSE #8 .53-1.00	1
63	055934N	CLAMP VINYL 1.31 X .281 Z	1
64	035461	BARBED STR 1/4NPT X 3/8	1
65	061012	PLUG STD PIPE 1/8 SOCKET HEAD	1
66*	077043A	CONDUIT FLEX .38 ID (6"LG) (TO COVER WIRES ON I/N 38)	1
67*	055934B	CLAMP VINYL 1 X .281 Z (USED TO HOLD HARNESS TO FAN SCROLL)	1
68*	055934V	CLAMP VINYL 1.5 X .281 Z (USED TO HOLD HARNESS TO FAN SCROLL)	1
69*	086292	SCREW DRILLTITE #10-16 X 1/4 (USED TO HOLD HARNESS TO FAN SCROLL)	1
70	036865	DRAINCOCK	1
71	044856	BUSHING REDUCER 1/2 TO 1/8	1
72	0E7093	ADAPTER, M28-1.25 X 1/8"NPT	1

*NOT SHOWN

8.1L GAS ENGINE COMMON PARTS RH (DIRECT DRIVE UNITS)

GROUP D



EXPLODED VIEW:
ENGINE COMMON PTS R/H SIDE(DIRECT DRIVE)
DRAWING #: 0E0977

PAGE 1 OF 2

REVISION: G-0594-E
DATE: 7/25/03

8.1L GAS ENGINE COMMON PARTS RH (DIRECT DRIVE UNITS)

ITEM	PART NUMBER	DESCRIPTION	QTY
1	0C7413	GROMMET 1.00 X .0625 X .375	1
2	0E0979	TUBE BEADED 45D 3/8" OD	1
3	083982	HOSE 3/8 ID 100R6 OIL LINE (10" LG)	1
4	0E0307	SPARK PLUG WIRE SET	1
5	053666	SENDER OIL PRESSURE	1
6	029612	COUPLING FULL 1/8-27	1
7	035483	NIPPLE PIPE 1/8 NPT X 1-1/2	1
8	035579	BUSHING REDUCER 1/4 TO 1/8	1
9	052677	WASHER NYLON .50 X .87 X .06	1
10	077456	ADPTR,M12-1.75 3/8NP	1
11	0D1651	ADPT-DIPSTK BARB 3/8	1
12	0A8205	ELBOW FIT COMP 3/8"-1/8"	1
13	055934D	CLAMP VINYL 1.06 X .406 Z	4
14	025507	WASHER SHAKEPROOF EXT 7/16 STL	2
15	022131	WASHER FLAT 3/8-M10 ZINC	14
16	046526	WASHER LOCK M10	14
17	051755	SCREW HHC M10-1.5 X 16 G8.8	6
18	022237	WASHER LOCK 3/8	6
19	0D6585	SCREW SHC 3/8-16 X 3.0 BLK OX	6
20	0A8240	FLEX PLATE SAE10	4
21	098239	CASTING ADAPTOR	1
22	055474	FLYWHEEL COVER	1
23	087599	PLUG PLASTIC 3/8 NPT	1
25	057192	SCREW SHC M10-1.5 X 30 G12.9	8
26	0D2244M	ASSY MAGPICKUP (3/8-24 MALE)	1
27	0D1562	FLYWHEEL 8.1L	1
28	0C3971F	ASSY DIPSTICK W/HANDLE 8.1L GM	1
29	0D1676	WELDMENT TUBE-DIPSTICK 8.1L	1
30	059056A	STARTER 5.7L/7.4L GM	1
31	058385A	BOLT STARTER GM 4-1/4"	2
33	043116	SCREW HHC M6-1.0 X 12 G8.8	4
34	022097	WASHER LOCK M6-1/4	4
35	022473	WASHER FLAT 1/4-M6 ZINC	4
36	042907	SCREW HHC M8-1.25 X 16 G8.8	1
37	022129	WASHER LOCK M8-5/16	1
38	022145	WASHER FLAT 5/16-M8 ZINC	1
45	0E4876	MANIFOLD ASSEMBLY, OIL SENDER	REF
46	0C7822	CAPLUG #6 X 9/16-41/64	REF
47	0E7590	MAP SENSOR 2 ATMOSPHERE (8.1L DIRECT DRIVE TURBO)	1

NOTE:

DIPSTICK ASSEMBLY MOUNTED ON ENGINE L/H SIDE FOR DIRECT DRIVE TURBO UNITS.

